



PRODUCT OVERVIEW

Complete power storage system features inverter and long life LiFePO4 batteries with high performance battery management system (BMS) and PCS is suitable for a wide range of applications. The SR-EOH energy storage system's modular design, including power modules and battery expansion modules, can be easily combined into a system of any capacity required.

FEATURES

- **EASY TO UPSCALE** - Up to 4 batteries in parallel expand to 20.48kWh; Up to 2 systems in parallel with double storage & output
- **EASY TO INSTALL** - No matching and commissioning required, ready to install; plug-and-play, eliminates wire clutter
- **USER FRIENDLY** - Get started quickly and use it instantly; Minimum width of just 13cm, saving space in the home
- **INTELLIGENT** - Users can set the charging and discharging time of the battery and grid to save on electricity bills; large LCD screen with real-time data
- **SAFETY** - High quality lithium iron phosphate cells; proven Li-ion battery management solutions
- **DESIGNED FOR FAMILIES** - Supports Off-grid/Hybrid/On-Grid output; multiple charge and discharge modes available

APPLICATIONS

- Emergency power supply
- Home backup storage
- Solar power storage
- Telecommunications backup power storage
- Data storage/UPS backup power storage

Product Description

PART#	DESCRIPTION	VOLTAGE	CAPACITY	OUTPUT	INPUT VOLTAGE
EV-SR-EOV05S-110	1 Inverter 10kW, 1 Battery 5.12kWh	51.2V	5.12kWh	100Ah	90~140Vac
EV-SR-EOV10S-110	1 Inverter 10kW, 2 Batteries 5.12kWh	51.2V	10.24kWh	200Ah	90~140Vac
EV-SR-EOV15S-110	1 Inverter 10kW, 3 Batteries 5.12kWh	51.2V	15.36kWh	300Ah	90~140Vac
EV-SR-EOV20S-110	1 Inverter 10kW, 4 Batteries 5.12kWh	51.2V	20.48kWh	400Ah	90~140Vac

Inverter Module Specifications

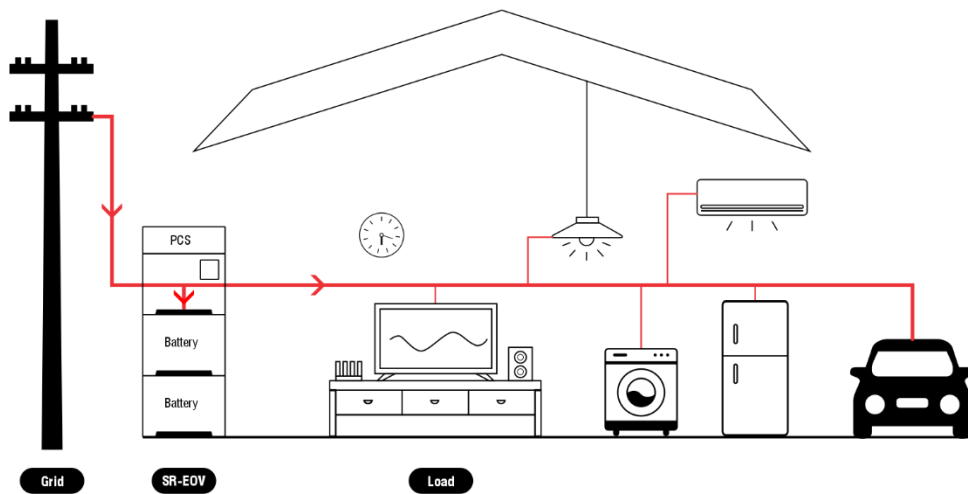
MODEL#		EV-SR-EOV05S-110
OUTPUT		
Rated Output Power		5,000W
Maximum Peak Power		10,000VA
Load Capacity of Motor		4HP
Wave Form		Pure Sine Wave
Rated Output Voltage		110Vac (single phase)
Maximum Parallel Capacity		2 units (up to 10kW split-phase)
Output Mode		Off-grid/Hybrid/On-grid
SOLAR INPUT		
Solar Charge Type		MPPT
Maximum Solar Array Power		5,500W
Maximum Solar Open Circuit Voltage		500Vdc
GRID/GENERATOR INPUT		
Input Voltage Range		90~140Vac
Bypass Overload Current		63A
BATTERY CHARGING		
Maximum Solar Charging Current		100A
Maximum Grid/Generator Charging Current		40A
GENERAL		
Dimension		500*555*130mm (1.64*1.82*0.42ft)

Battery Module Specifications

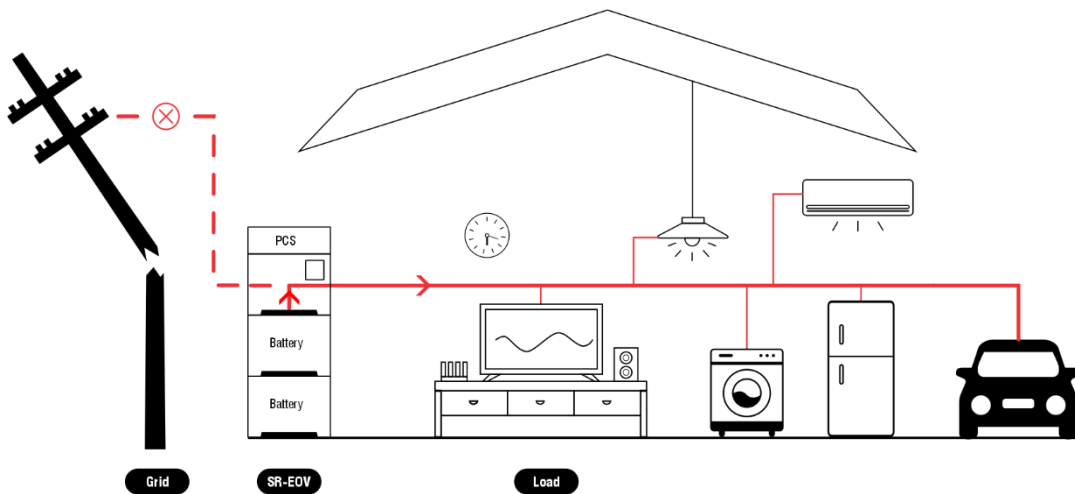
MODEL#		EV- SR-EOV05B
Battery Power		5.12kWh
Rated Voltage		51.2V
Rated Capacity		100Ah
Battery Type		LFP
Cycling Lifespan		6000 (80%DOD, 0.5C, 25°C)
Maximum Parallel Capacity		4 units (up to 20.48kWh)
Dimension		600*555*130mm (1.96*1.82*0.42ft)
Standard		UN38.3, MSDS, IEC62619, UL1973, IEC61000, RoHS

Application Scenarios

Grid Power Storage

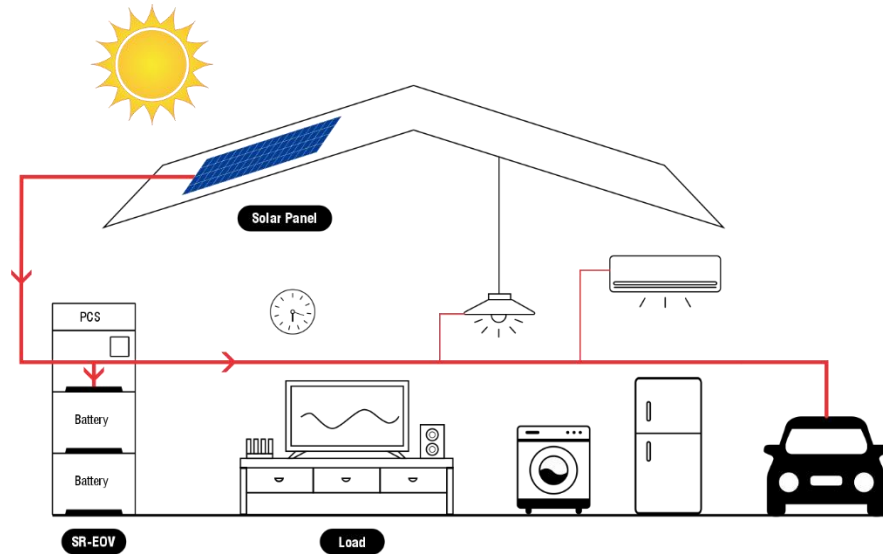


Power Storage Mode

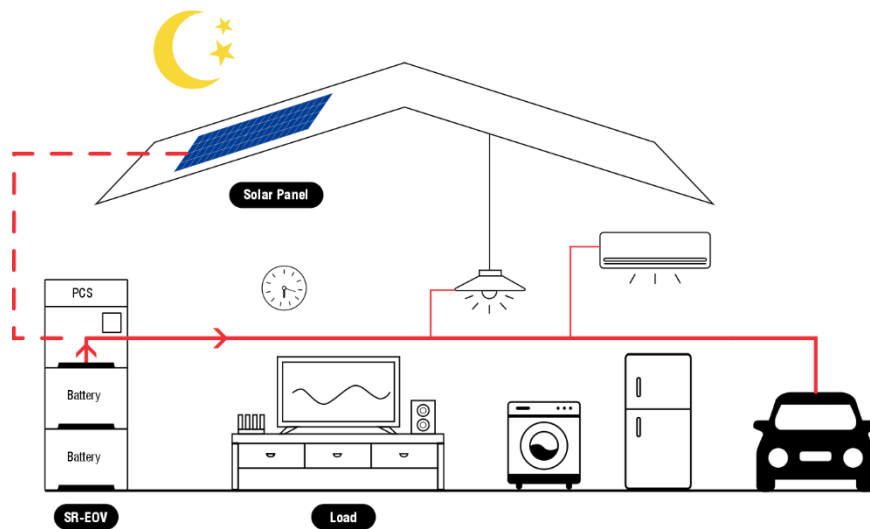


Emergency Power Discharge Mode

Off-Grid Solar Power Storage

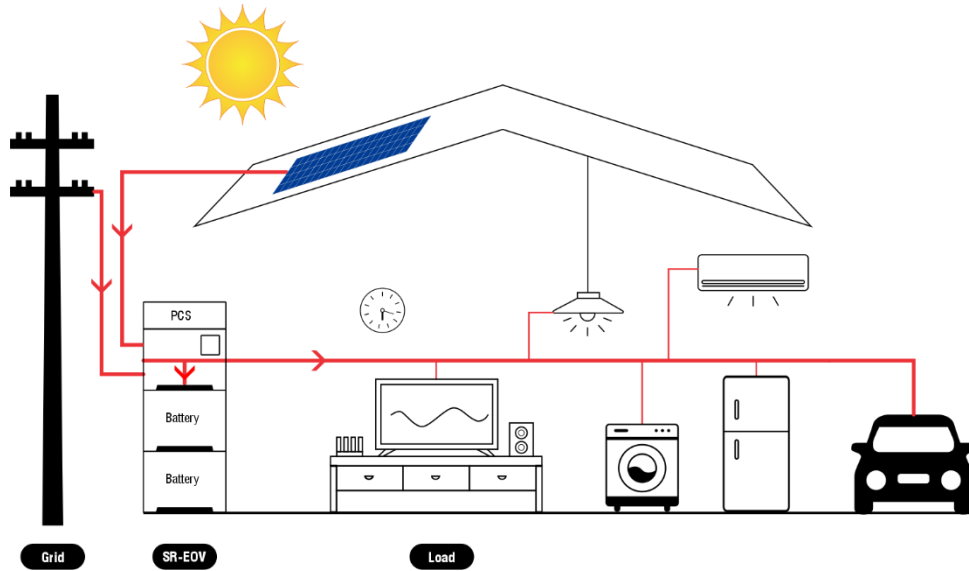


Power Storage Mode

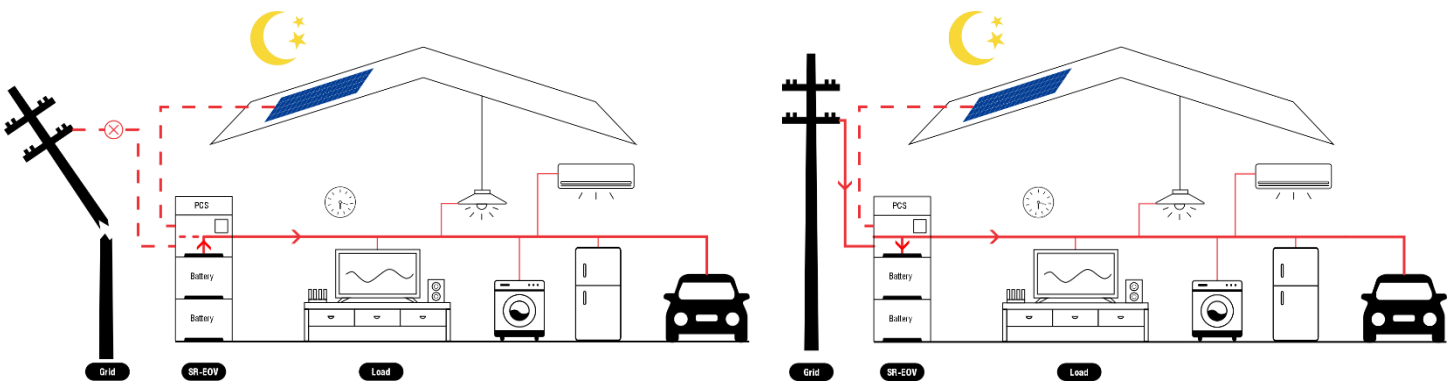


Power Discharge Mode

Grid and Solar Combined Power Storage



Power Storage Mode



Emergency Power Discharge Mode

Night Power Storage Mode