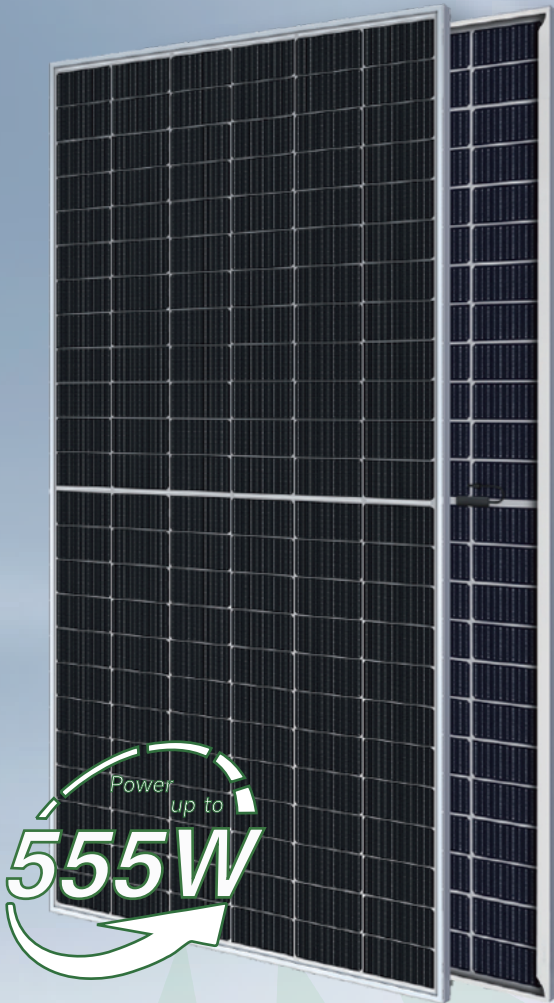


PERC G10 Series 535-555W

144-cell PERC Half Cell
Double-glass Solar Module



SMBB design with Half-Cut Technology

Shorter current transmission distance, less resistive loss and higher cell efficiency.



Up to 80% Bifaciality

Natural symmetrical bifacial structure bringing more energy yield from the backside.



Sealing with PIB based sealant

Stronger water resistance, greater air impermeability to extent module lifespan.



Higher reliability

Industrial leading product and performance warranty, ensuring modules' consistent outstanding performance.



Suitable for Utility project

Lower BOS cost, lower LCOE.

WARRANTY

Product
Warranty **30** years

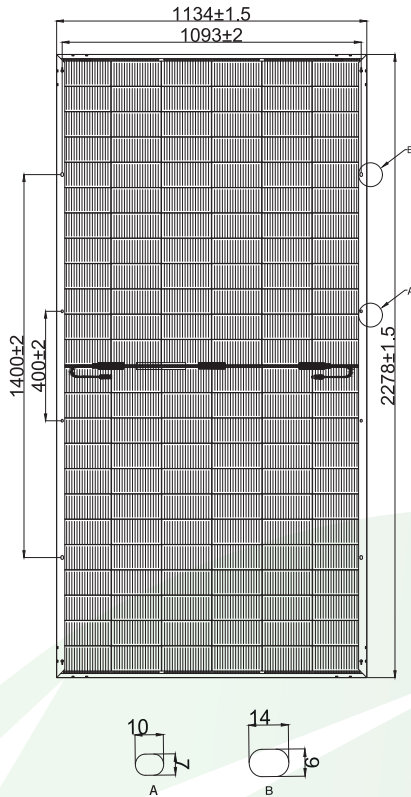
Linear
Power
Warranty **30** years



PERC G10 Series 535-555W 144-cell PERC Module

Engineering Drawings

Unit: mm



Electrical Characteristics (STC*)

THS-D72HPD	535W	540W	545W	550W	555W
Maximum Power (Pmax)	535W	540W	545W	550W	555W
Module Efficiency (%)	20.71%	20.90%	21.10%	21.29%	21.48%
Optimum Operating Voltage(Vmp)	41.87V	42.09V	42.32V	42.54V	42.76V
Optimum Operating Current (Imp)	12.78A	12.83A	12.88A	12.93A	12.98A
Open Circuit Voltage (Voc)	49.78V	49.91V	50.12V	50.34V	50.56V
Short Circuit Current (Isc)	13.53A	13.58A	13.63A	13.68A	13.73A
Operating Module Temperature	-40 to +85°C				
Maximum System Voltage	DC1500V (IEC)				
Maximum Series Fuse	25A				
Power Tolerance	0~+5W				
Bifaciality	80%±5%				

*STC: Irradiance 1000 W/m², cell temperature 25°C, AM=1.5. Tolerance of Pmax is within +/- 3%.

NMOT*

Maximum Power (Pmax)	405W	409W	412W	416W	420W
Optimum Operating Voltage(Vmp)	38.72V	38.96V	39.13V	39.32V	39.51V
Optimum Operating Current (Imp)	10.46A	10.50A	10.53A	10.58A	10.63A
Open Circuit Voltage (Voc)	46.29V	46.42V	46.61V	46.82V	47.03V
Short Circuit Current (Isc)	11.07A	11.11A	11.16A	11.20A	11.24A

*NMOT: Front side irradiation 800W/m², wind speed 1m/s, ambient temperature 20°C.

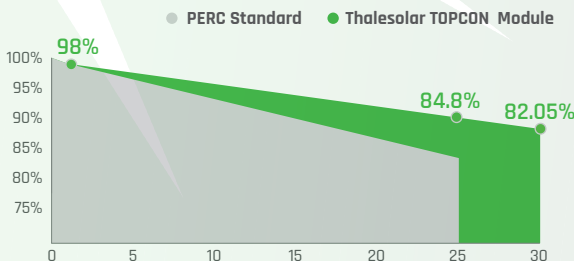
Temperature Characteristics

Nominal Operating Cell Temp.(NOCT)	45°C ± 2°C
Temperature Coefficient of Pmax	-0.35%/°C
Temperature Coefficient of Voc	-0.275%/°C
Temperature Coefficient of Isc	0.05%/°C

Safety & Warranty

Safety Class	Class II
Product Warranty	30 yrs Workmanship
Performance Warranty	30 yrs Linear Warranty*

*Less than 2% attenuation in the 1st year, the annual attenuation from the 2nd year is no more than 0.55%, and the power is no less than 82.05% until the 30th year.



*Refer to Thalesolar standard warranty for details

Mechanical Characteristics

Cell Type	PERC Mono 182X91mm
Cell Connection	144(6X24)
Module Dimension	2278X1134X30mm
Weight	32.2kg
Junction Box	IP68
Output Cable	4mm ² , 300mm in length, length can be customized/UV resistant
Connectors Type	MC4 original/MC4 compatible
Frame	Anodised aluminum alloy
Encapsulant	PDE/EPE
Front Load	5400Pa
Rear Load	2400Pa
Glass Thickness	Solar glass 2.0/2.0mm

Shipping Configurations

Container Type	HC
Container Size	40'
Pallets Per Container	20
Modules Per Pallet (pcs)	36
Modules Per Container (pcs)	720