

TRITEC

ENERGY FOR A BETTER WORLD

TRI-ROOF+

The perfect mounting solution
for roof-integrated PV systems.

- secure
- aesthetic
- efficient

The main advantages:

- Floating in-roof system, thus no thermal separation necessary
- Closed module surface for highest aesthetics
- Special profiles for maximum water impermeability
- Optimum load distribution and stability
- Suitable for all common framed solar modules

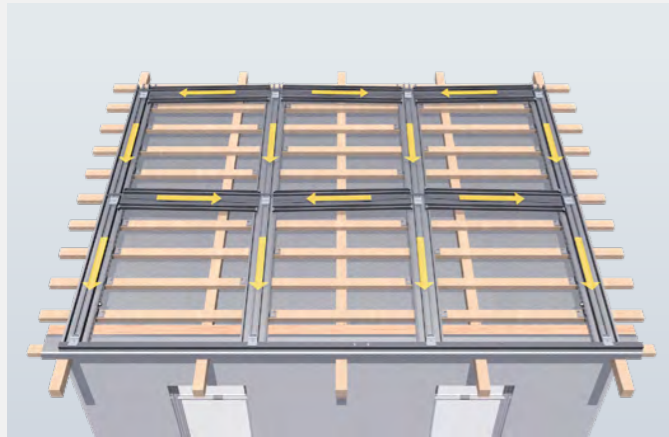
www.tritec-energy.com

TRI-ROOF+ FOR IN-ROOF

This way you easily increase your efficiency

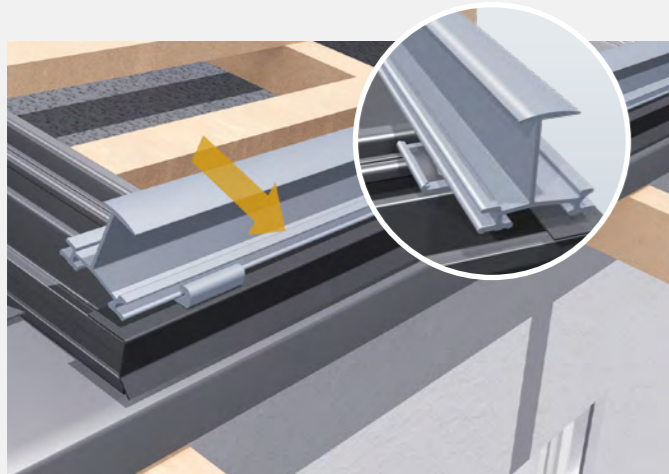
The TRI-ROOF+ in-roof mounting system replaces parts of the tile roof or the entire roof covering. Thanks to smart planning software and patented SafeClick mounting, the PV in-roof insertion system is extremely safe and easy to install on the roof. The innovative water drainage system ensures safe drainage of rainwater. The PV modules are easily inserted into the insertion profiles and are held in place by their own weight. Additional fastening of the modules is completely unnecessary.

This is how clever TRI-ROOF+ is installed



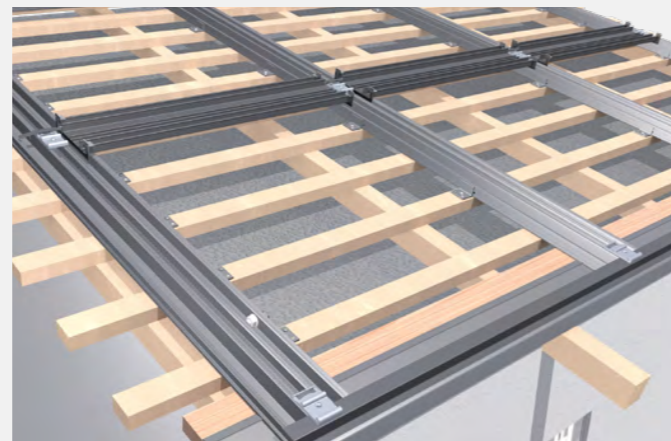
1. Attach the substructure

The substructure is mounted directly onto the roof battens. The rainwater is safely drained off via the innovative water drainage system.



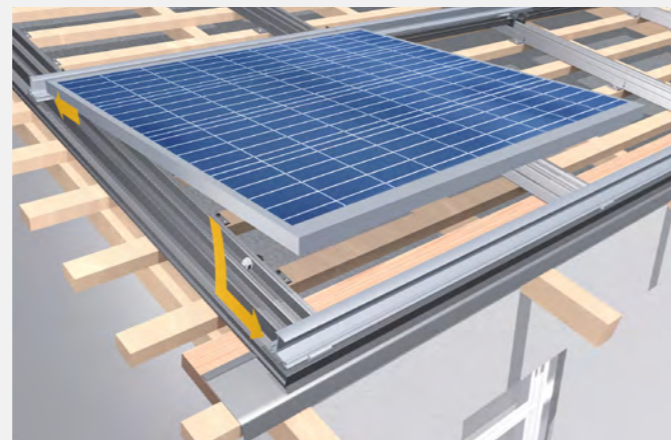
3. Clicking the TS insert profiles into the SafeClick

The insertion profiles are clicked into the SafeClick and are floatingly connected to the roof. Damage to the roof and module caused by thermal expansion is thus avoided.



2. Mounting the SafeClicks

The SafeClick elements are screwed onto the IP in-roof profiles at the specified distance on the entire substructure according to the instructions.



4. Inserting the modules into the TS insertion profiles


The modules are inserted into the insertion profiles and are held in place by their own weight - there is no need for additional fastening.

THE ADVANTAGES OF TRI-ROOF+

The smartly thought-out and aesthetic insertion system



The TRI-ROOF+ in-roof mounting system offers an unbeatable appearance with its homogeneous surface. Especially when using black components of the insertion system and black modules, the highest aesthetics are achieved. TRI-ROOF+ allows the use of all common types of modules from different manufacturers. The components of the insert system are statically tested and optimally designed for wind and snow loads. This means that the solar roof remains stable even in extreme weather conditions.

What TRI-ROOF+ offers

- 



1. Pure aesthetics thanks to an invisible support system

TRI-ROOF+ scores with its extremely aesthetic appearance. This is because the support system replaces individual parts or entire roof coverings and is invisible compared to standardised on-roof mounting systems.


- 


2. Dry by means of an innovative water drainage system

TRI-ROOF+ keeps tight. The Rainwater is largely drained directly through the PV modules. The remaining water collects in the specially developed water-bearing support profiles, through which it is drained away.


- 

3. Safe due to static testing and certification

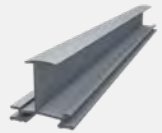
All components of the TRI-ROOF+ in-roof mounting system are statically tested and optimally designed for wind and snow loads. The ISO-certified mounting system thus offers guaranteed safety on the roof.



SYSTEM COMPONENTS

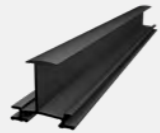
All components at a glance

With TRITEC you have the choice: Some components for the PV in-roof system TRI-ROOF+ are available in the color selection „blank“ (aluminum silver) and „black“. Completely tailored to your needs: The profiles and variants marked with * are available in different lengths on request.



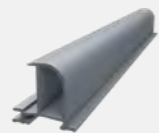
TRI-STAND insertion profile, blank
Standard

- Variants: TS-30/32/35/38/40
- available in different lengths*



TRI-STAND insertion profile, black
Standard

- Variants: TS-30/32/35/38/40
- available in different lengths*



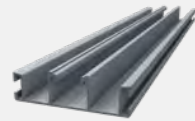
TRI-STAND end profile, blank
Optional

- Variants: TS-30/32/35/40
- available in different lengths*



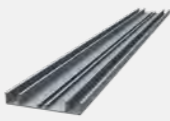
TRI-STAND end profile, black
Optional

- Variants: TS-30/32/35/40
- available in different lengths*



TRI-ROOF+ in-roof profile IP 3,80 m
Standard

- Item no.: 1503174



TRI-ROOF+ horizontal rail TR-H 3,50 m
Standard

- Item no.: 1503187



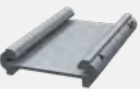
TRI-STAND SafeClick-Torx, blank
Standard

- Item no.: 1502870



TRI-STAND SafeClick-Torx, black
Standard

- Item no.: 1502963



TRI-STAND insertion profile connector TS-C, blank
Standard

- Item no.: 1502216



TRI-STAND insertion profile connector TS-C, black
Standard

- Item no.: 1502417



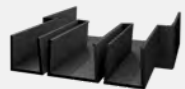
TRI-STAND end bracket TS-E, blank
Standard

- Item no.: 1502214



TRI-STAND end bracket TS-E, black
Standard

- Item no.: 1502307



TRI-ROOF+ IP profile connector IP-C
Standard

- Item no.: 1502929



TRI-ROOF+ end plate below AU
Standard

- Item no.: 1502931



TRI-ROOF+ mounting clip TR-C
Standard

- Item no.: 1502544



TRI-ROOF+ in-roof profile holder IP-U
Standard

- Item no.: 1502930



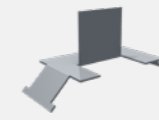
TRI-ROOF+ end support TR-E+
Standard

- Item no.: 1503031



TRI-ROOF+ centre support TR-M
Standard

- Item no.: 1502667



TRI-ROOF+ spacer TR-D
Standard

- Item no.: 1502668



TRI-ROOF+ flat connector
Standard

- Item no.: 1502308



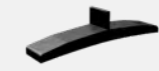
TRI-ROOF+ drip tray TR-H
Standard

- Item no.: 1502965



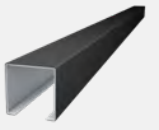
TRI-STAND sliding nut M10
Standard

- Item no.: 1502219



TRI-STAND MS EPDM module backup
Standard

- Item no.: 1502990



TRI-ROOF+ filling piece, black 30/35/40 mm
Standard

- 30 mm, item no.: 1502945
- 35 mm, item no.: 1502932
- 40 mm, item no.: 1502933



TRI-STAND hexagon bolt M10x25 A2
Accessories

- Item no.: 1502256



TRI-STAND pan head screw
Accessories

- 8.0 x 80 TX40, item no.: 1502281
- 8.0 x 120 TX40, item no.: 1502282



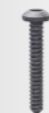
TRI-STAND hammer head bolt M10x30 A2, with locking nut
Accessories

- Screw, Item no.: 1502255
- Locking nut, Item no.: 1502254



TRI-STAND thin sheet metal screw
Accessories

- Item no.: 1502934



TRI-ROOF+ round head screw
Accessories

- Item no.: 1502547



TRI-STAND Edge Clip cable fixation
Accessories

- Item no.: 1502246



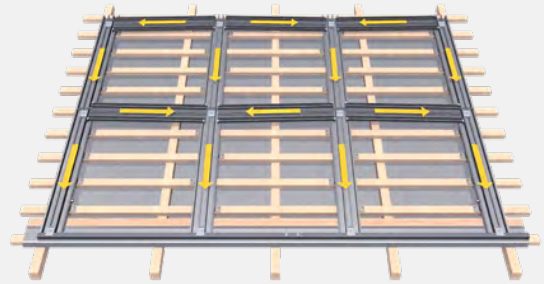
TRI-STAND bending tool+
Accessories

- Item no.: 1502935

LEARN MORE

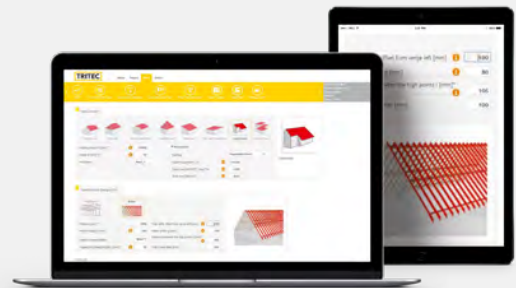
Videos, planning and contact

TRITEC



Simply scan the QR code or visit the following the following link for more information about TRI-ROOF+, such as installation video, mounting instructions and references.

www.tritec-energy.com/en/pv-mounting-systems/tri-roof/



Just scan the QR code or visit the following link to watch the training video on our TRI-DESIGN planning software.

www.tritec-energy.com/en/training/tri-design-basic/

The optimal mounting solution for every roof

TRITEC mounting systems combine over 30 years of photovoltaic experience. Our own products TRI-STAND, TRI-ROOF+, TRI-CLIP and TRI-FLAT Easyspeed offer optimum PV mounting solutions for the various requirements of different roof types and alignments. We attach great importance to the high-quality processing of the components as well as to the durability of the substructure.

Further information and the download of the assembly instructions you will find on our homepage www.tritec-energy.com.

Or just talk to us directly. Our experts are at your disposal to answer all your questions.

Contact

info@tritec-energy.com
www.tritec-energy.com