

Lithium-Ionen-Battery

BTLi 12-100B

BTLi 12-120B

The batteries of the BTLi series are maintenance-free lithium-ion rechargeable batteries (LiFePO4) with a service life expectancy of >5000 cycles and only 40% of the weight of lead-acid batteries. They use a built-in Battery Management System (BMS) for maximum reliability. Excellent for camping, outdoor and caravan but also e.g. for UPS systems, DC power supplies, security systems and as solar or wind energy storage.

The BTLi 12-120B and BTLi 12-100B also have a built-in Bluetooth interface, which can be used to monitor the charge level and battery status at any time via Android or iOS app.

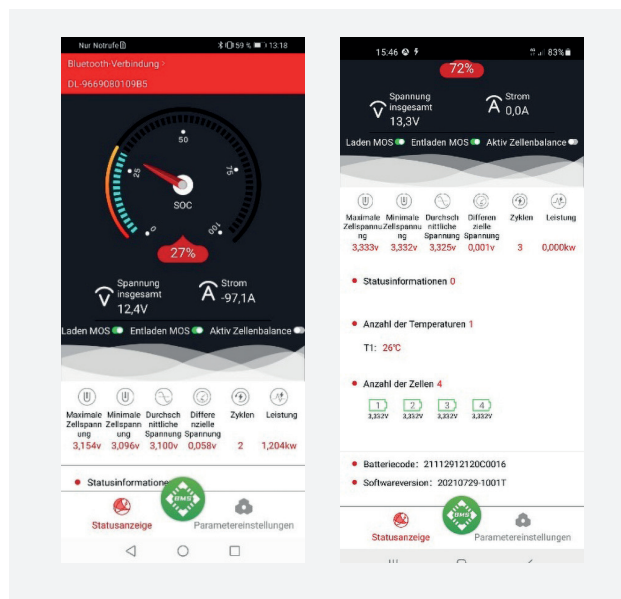


Special features



Your benefits:

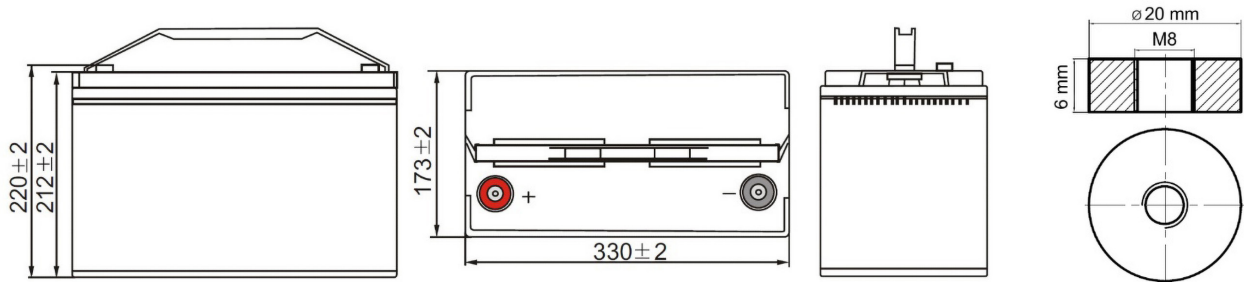
- >5000 charge/discharge cycles
- Thus far longer battery life than conventional lead-acid batteries
- Low service costs due to rarely necessary battery replacement
- Only 40% of the weight of lead batteries
- Can be used in higher temperature window
- Battery management system (BMS) integrated into the battery
- Wireless operation, configuration and monitoring of the BMS via German/English-language APP
- Monitoring APP available for Android as well as for iOS
- 24 months warranty



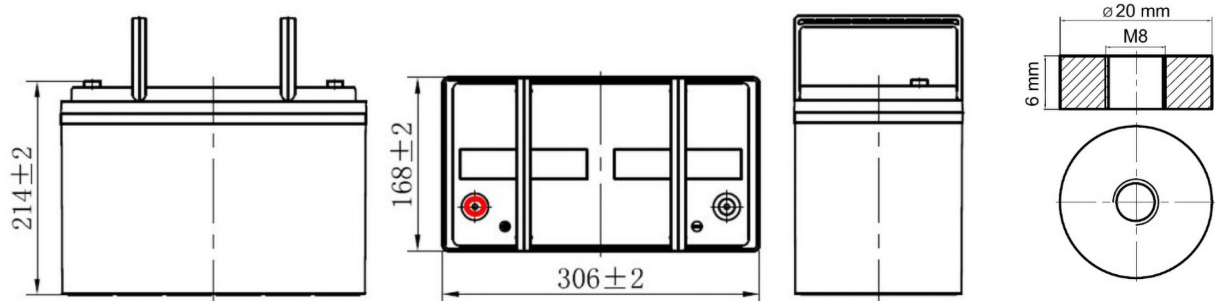
Professional Android/iOS app in German/English language for control over battery functions, condition and capacity.

Specifications

Dimensions BTLi 12-120B



Dimensions BTLi 12-100B



Specifications		BTLi 12-120B	BTLi 12-100B
Battery type		LiFePO4	
Nominal voltage		12.8V	
Nominal capacity / energy		120Ah / 1536Wh	100Ah / 1280Wh
Cycle life		>5000 cycles @ 0.2C 50% DoD / >2000 cycles @ 0.2C 100% DoD	
Connections		M8 Screw connection, contact surface Ø 20mm	
Enclosure material / enclosure class		Acrylnitril-Butadien-Styrol (ABS) / IP65	
Permissible mounting position		Max. 90° to upright normal position (see picture above right)	
Internal resistance		≤20mΩ	≤50mΩ
Self-discharge		<3% (@ 25°C / month)	
Standard charging	Charging voltage	14.6 ± 0.2V	
	Charging process	0.2 C to 14.6V	
	Charging current	50A	
	Charging current max.	100A	
	Overcharge protection	15.0V ± 0.2V	
Standard discharging	Discharge current max.	100A	
	Discharge current peak	150A (<1sec.)	
	Discharge cut-off voltage	8.8V	
BMS Battery management		Integrated	
Interconnection		Up to 4 batteries in series or parallel	
Monitoring		Bluetooth with smartphone app	
Operating temperature ranges (At 60±25% relative humidity)	Discharging	-20°C .. +60°C	
	Charging	0°C .. +45°C	
	Storage	0°C .. +40°C	
Dimensions	Length	330 ± 2mm	306 ± 2mm
	Width	173 ± 2mm	168 ± 2mm
	Height	220 ± 2mm	214 ± 2mm
	Weight	14kg	12kg