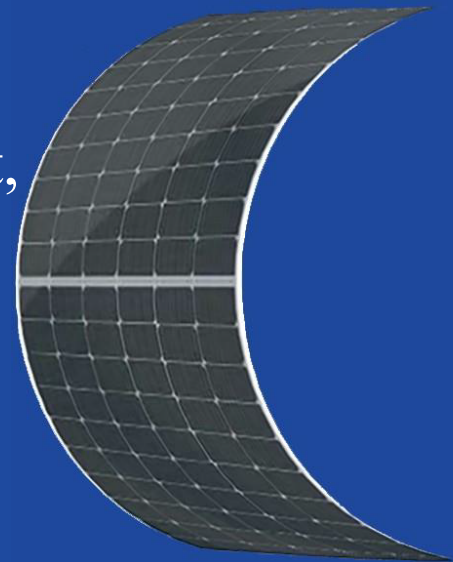


HG-L Lightweight & Flexible Series

Greatly decreased the product weight,
far less cost to install.

505W-535W



• Products Features

- Lightweight, Ultra-high flexibility, Easy to install.
- Reducing the adaptive loss to get higher power.
- Competitive weak light tolerance performance.
- Minimizing the shading affection to reduce power loss.
- The superior reliability has been proven through rigorous weathering test:
 - Sand and dust resistance, acid and alkali-resistance, salt mist resistance
 - Anti- PID
 - Hail shock resistance

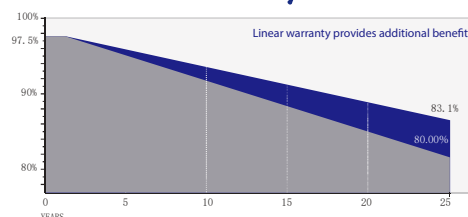
• Quality System

ISO9001
ISO14001
ISO45001

• Product Certification



• Product Warranty



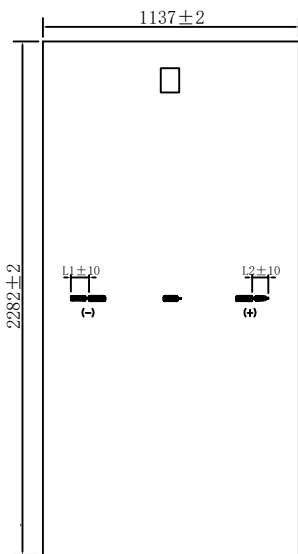
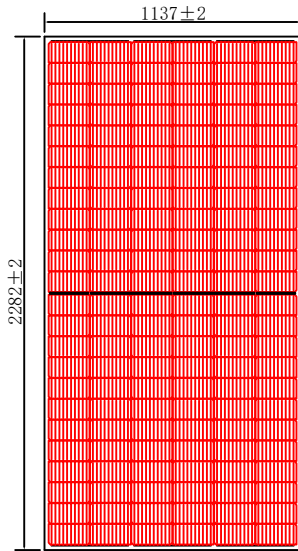
Quality and process performance Assurance



Liner power Output Warranty

Address: No.633 Chengnan Avenue, Banqiao Industrial Park, Rongchang District, Chongqing, China

Email: info@hg-energy-group.com



Electrical Parameters

Module Type	HG-L505-72CW		HG-L510-72CW		HG-L525-72CW		HG-L530-72CW		HG-L535-72CW	
	STC	NMOT	STC	NMOT	STC	NMOT	STC	NMOT	STC	NMOT
Maximum Power (P_{max})	505W	376W	510W	379W	525W	391W	530W	394W	535W	398W
Open Circuit Voltage (V_{oc})	49.15V	45.92V	49.30V	46.06V	49.75V	46.49V	49.90V	46.63V	50.05V	46.77V
Short Circuit Current (I_{sc})	13.42A	10.83A	13.49A	10.89A	13.70A	11.06A	13.76A	11.11A	13.83A	11.16A
Max Power Voltage (V_{mp})	40.60V	38.48V	40.75V	38.62V	41.20V	39.05V	41.35V	39.19V	41.50V	39.33V
Max Power Current (I_{mp})	12.45A	9.77A	12.53A	9.81A	12.75A	10.01A	12.83A	10.05A	12.90A	10.12A
Module Efficiency STC (η_s)	19.5%		19.7%		20.2%		20.4%		20.6%	
Power Tolerance	0~+5W									
Maximum System Voltage	1500V DC									
Max Serie Fuse Rating	25A									

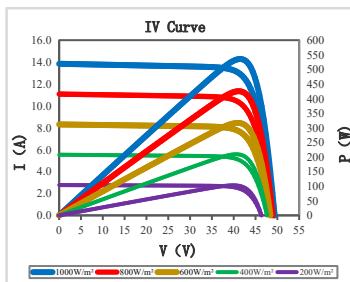
STC: irradiance 1000W/m² module temperature 25°C AM=1.5

NMOT: irradiance of 800W / m², ambient temperature 20°C, and wind speed 1m / s

The uncertainty of Pmax, Voc, Isc testing is ± 3%

Mechanical Specifications

External Dimension	2282mm*1137mm		
Version	Basic Version	Enhanced Version	High Performance Version
Thickness	3.0mm	3.3mm	3.6mm
Weight	8.7kg	10.2kg	11.7kg
Solar Cell	Mono crystalline 182*91mm, 144 (6*24)		
Frame	/		
GLASS	/		
Junction Box	IP68, 3 diodes, MC4 compatible		
Output Cables	4.0mm ² (IEC), 300mm(+)/300mm(-) or Customized Length		



Temperature characteristic

Pmax Temperature Coefficient	-0.35 %/°C
Voc Temperature Coefficient	-0.26 %/°C
Isc Temperature Coefficient	+0.047 %/°C
Operating Temperature	-40 ~ +85 °C
Nominal module operation temperature	45 ± 2 °C

Package

Packing Unit	40HQ	17.5m platform truck
PCS/CTNS	68	68
Qty of Package	20	30
PCS/Packages	1360	2040