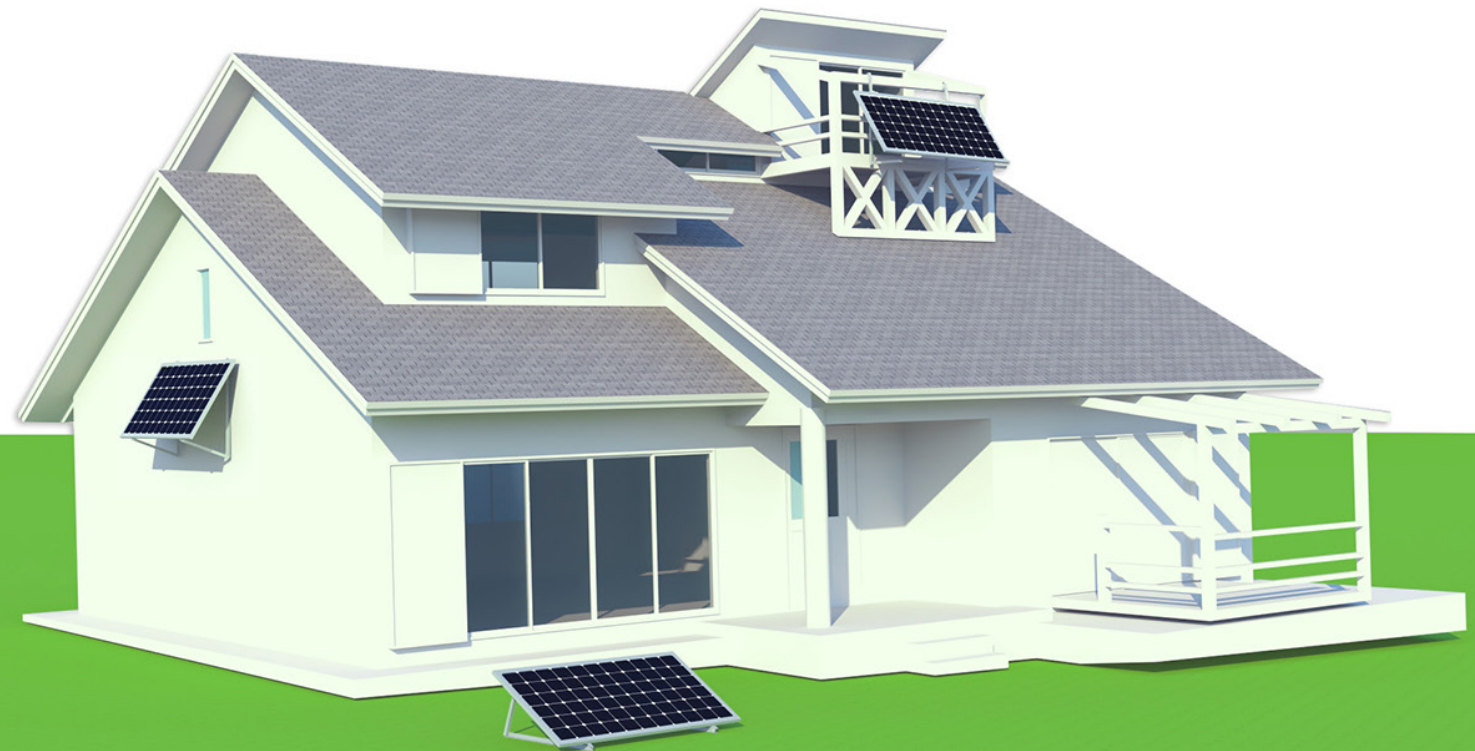


# Balcony Solar Power System

Suitable for

■ Balcony ■ Wall ■ Flat area



All-In-One



Ready-to-use



Unlimited  
Installation  
Scenarios



Plug and Play



12 Years  
Warranty

FUJIAN SUPER SOLAR ENERGY TECHNOLOGY CO.,LTD.

director@chinasupersolar.com | www.chinasupersolar.com | 86-592-6683155

# Balcony triangle bracket

SS-MBW-001



Commonly-sized panels oriented

## Description

This bracket can be simply load on the balcony flooring. It can also be mounted on other flat area and walls with expansion bolts, or with cement ballast.

## Features

- Basic but strong structure
- Plug and play solar system for daily use
- Suitable for commonly-sized panels
- Highly pre-assembled and quick installation

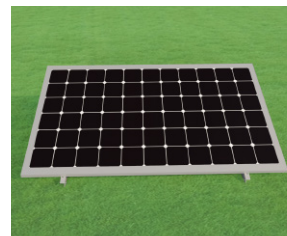
## Accessories



## Application



Wall



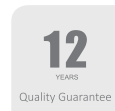
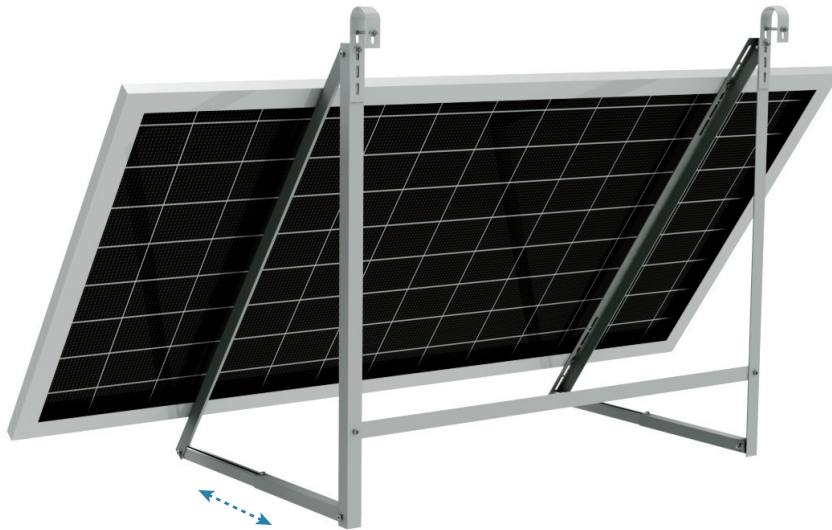
Flat area

## Technical datasheet

Installation site	Wall, flat area
Tilt angle	36deg or DIY
Material	AL6005-T5&SUS304
Color	Natural
Treatment	Anodizing
Solar panel	Framed
Panel orientation	Landscape
Length of panel	1400-2400mm
Width of panel	700-1300mm
Thickness of panel	No limit
Warranty	12 years
Service life	25 years

# Railing adjustable triangle bracket

SS-MBW-002



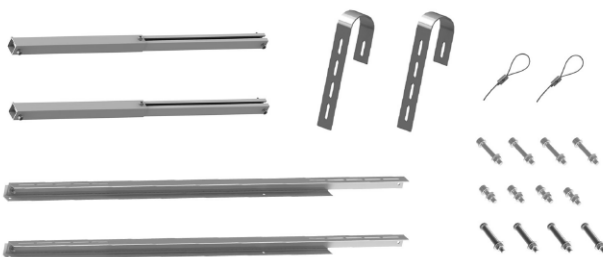
## Description

This bracket can be simply load on the balcony flooring or be attached to balcony railings with curved hooks. It can also be mounted on other flat area and walls with expansion bolts, or with cement ballast.

## Features

- Strong but angle adjustable structure
- Little extra space required
- No damage to the building structure
- Suitable for commonly-sized panels
- Highly pre-assembled and quick installation

## Accessories



## Application



Balcony railing

Wall

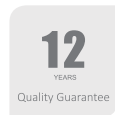
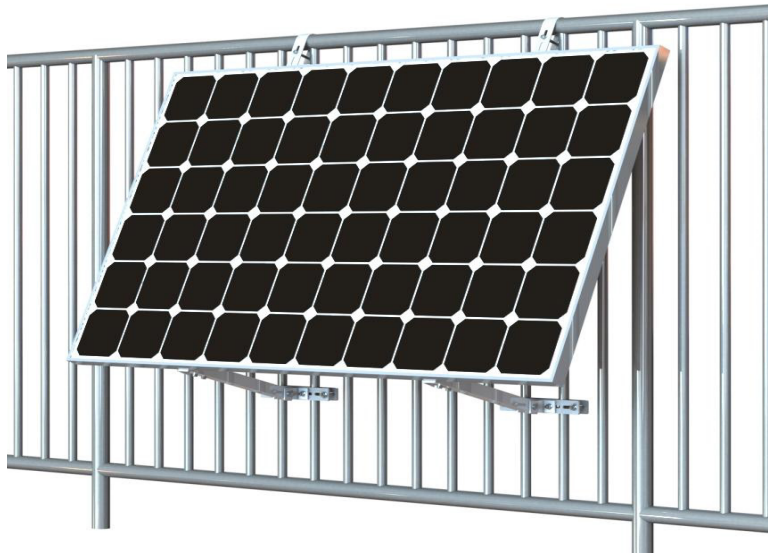
Flat area

## Technical datasheet

Installation site	Balcony, wall, flat area
Adjustable tilt	18-36deg
Material	AL6005-T5&SUS304
Color	Natural
Treatment	Anodizing
Solar panel	Framed
Panel orientation	Landscape
Length of panel	1400-2400mm
Width of panel	700-1300mm
Thickness of panel	No limit
Warranty	12 years
Service life	25 years

# Railing adjustable pillar bracket

SS-MBW-003



## Description

This bracket can be simply load on the balcony flooring or be attached to balcony railings with curved hooks. It can also be mounted on other flat area and walls with expansion bolts, or with cement ballast.

## Features

- Tilt angle adjustable structure
- Little extra space required
- No damage to the building structure
- Suitable for commonly-sized panels
- Highly pre-assembled and quick installation

## Accessories



## Application



Balcony railing



Balcony with wall

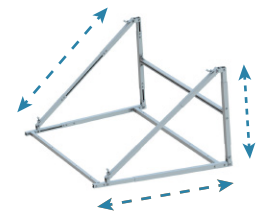
## Technical datasheet

Installation site	Balcony
Title angle	15-30deg
Material	AL6005-T5&SUS304
Color	Natural
Treatment	Anodizing
Solar panel	Framed
Panel orientation	Landscape
Length of panel	1400-2400mm
Width of panel	700-1300mm
Thinckness of panel	No limit
Warranty	12 years
Service life	25 years

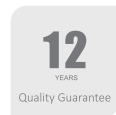


# Universal 3-way adjustable bracket

SS-MBW-004



3-way adjustable



## Description

This bracket can be simply load on the balcony flooring. It can also be mounted on other flat area and walls with expansion bolts, or with cement ballast.

## Features

- 3-way adjustable multi-functional structure
- No damage to the building structure
- Suitable for commonly-sized panels
- Highly pre-assembled and convenient installation

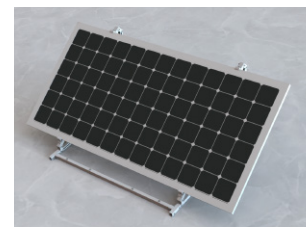
## Accessories



## Application



Balcony



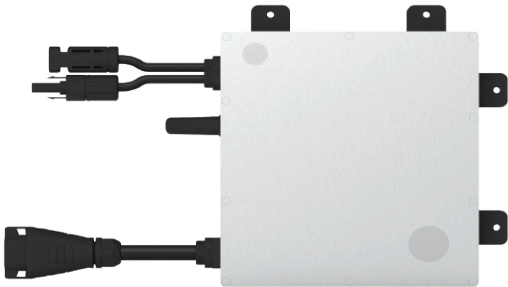
Flat area

## Technical datasheet

Installation site	Balcony, flat area, wall
Title angle	30-43deg
Material	AL6005-T5&SUS304
Color	Natural
Treatment	Anodizing
Solar panel	Framed
Panel orientation	Landscape
Length of panel	1400-2400mm
Width of panel	700-1300mm
Thickness of panel	30-45mm
Warranty	12 years
Service life	25 years

# Microinverter

SS-350



SS-600

SS-800



## Features

<b>Plug and play</b>	Plug and play, faster installation
<b>High-powered</b>	High-powered microinverter for 2-in-1 with output power up to 1000 VA
<b>Safety guarantee</b>	Safer for rooftop solar stations with integrated rapid shutdown functionality and isolated transformer
<b>Technical compliance</b>	With reactive power control, compliant with EN 50549-1:2019, VDE-AR-N 4105:2018, UL 1741, etc.
<b>High efficiency</b>	Independent MPPT and monitoring ensure greater energy harvest and easier maintenance
<b>Communication optimization</b>	Sub-1G wireless solution allows stable communication in commercial and industrial settings

## Technical datasheet

Input Data (DC)	SS-350	SS-600	SS-800
Commonly used module power(W)	280 to 470+	240 to 405+	320 to 540+
Maximum input voltage(M)	60	60	65
MPPT voltage range(V)	16-60	16-60	
Start-up voltage(M)	22	22	
Max input current (A)	13	2x12	2x14
Max input short circuit current (A)	20	2x20	2x25
Number of MPPTs	1	2	
Number of nputs per MPPT	1	1	
Output Data (AC)			
Rated output power(VA)	350	600	800
Rated output current (A)	1.52	2.61	3.48
Nominal output voltage/range(M)	230/180~275	230/180~275	
Nominal frequency/range(Hz)'	50/45-55	50/45-55	
Power factor (adjustable)	>0.99 default 0.8 leading...0.8 lagging	>0.99 default 0.8 leading...0.8 lagging	
Total harmonic distortion	< 3%	< 3%	
Max units per 12 AWG branch <sup>2</sup>	13	12	9
Max units per 10 AWG branch <sup>2</sup>	21	7	5
Mechanical Data			
Ambient temperature range( C )	-40 to +65	-40 to +65	
Storage temperature range( C )	-40 to +85	-40 to +85	
Dimensions(WxH*D[mm])	184.5x204.5x26	261x180x35.1	
Weight(kg)	1.71	3.2	
Enclosure rating	Outdoor-IP67(NEMA 6)	Outdoor-IP67(NEMA 6)	



# Project Case





**FUJIAN SUPER SOLAR ENERGY TECHNOLOGY CO.,LTD.**

Add: #1203, Building A02, Jimei Software Park, Xiamen, Fujian, China

Tel: 86-592-6683155

Email: [director@chinasupersolar.com](mailto:director@chinasupersolar.com)

Web: [www.chinasupersolar.com](http://www.chinasupersolar.com)