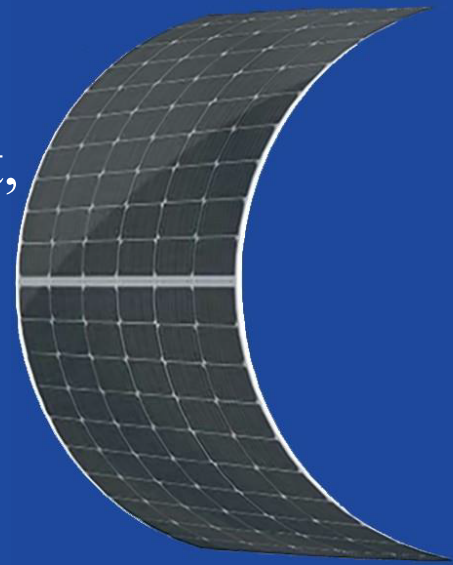


HG-L Lightweight & Flexible Series

Greatly decreased the product weight,
far less cost to install.

465W-485W



• Products Features

- Lightweight, Ultra-high flexibility, Easy to install.
- Reducing the adaptive loss to get higher power.
- Competitive weak light tolerance performance.
- Minimizing the shading affection to reduce power loss.
- The superior reliability has been proven through rigorous weathering test:
 - Sand and dust resistance, acid and alkali-resistance, salt mist resistance
 - Anti- PID
 - Hail shock resistance

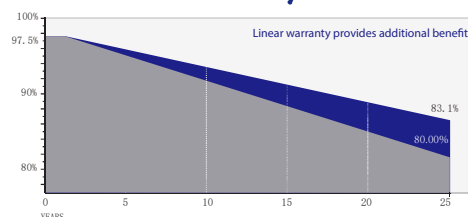
• Quality System

ISO9001
ISO14001
ISO45001

• Product Certification



• Product Warranty



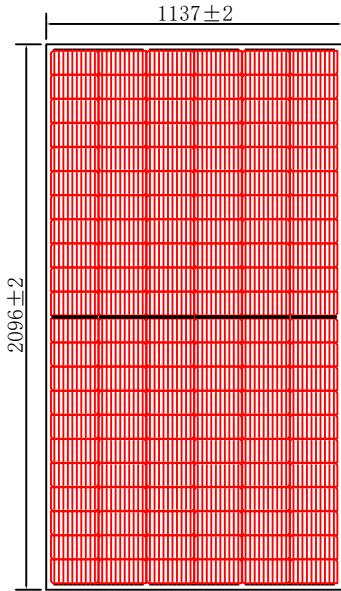
Quality and process performance Assurance



Liner power Output Warranty

Address: No.633 Chengnan Avenue, Banqiao Industrial Park, Rongchang District, Chongqing, China

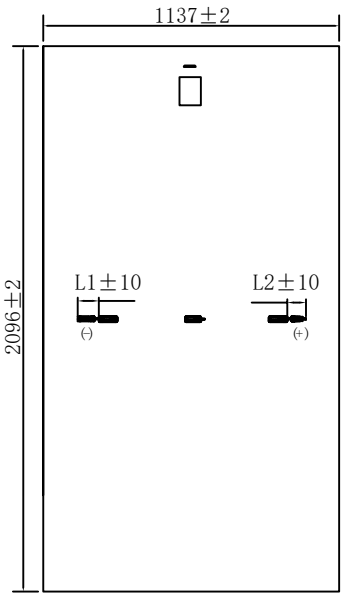
Email: info@hg-energy-group.com



Electrical Parameters

Module Type	HG-L465-66CW		HG-L470-66CW		HG-L475-66CW		HG-L480-66CW		HG-L485-66CW	
	STC	NMOT	STC	NMOT	STC	NMOT	STC	NMOT	STC	NMOT
Maximum Power (P_{max})	465W	346W	470W	350W	475W	353W	480W	357W	485W	361W
Open Circuit Voltage (V_{oc})	45.20V	42.18V	45.35V	42.32V	45.50V	42.46V	45.65V	42.60V	45.80V	42.70V
Short Circuit Current (I_{sc})	13.44A	10.85A	13.51A	10.90A	13.58A	10.96A	13.65A	11.02A	13.73A	11.08A
Max Power Voltage (V_{mp})	37.32V	35.37V	37.47V	35.51V	37.62V	35.66V	37.77V	35.80V	37.92V	35.90V
Max Power Current (I_{mp})	12.48A	9.78A	12.56A	9.86A	12.64A	9.90A	12.72A	9.97A	12.80A	10.06A
Module Efficiency STC (η_s)	19.5%		19.7%		19.9%		20.1%		20.4%	
Power Tolerance	0~+5W									
Maximum System Voltage	1500V DC									
Max Serie Fuse Rating	25A									

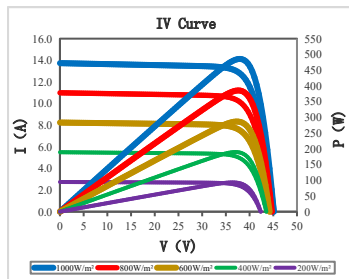
STC: irradiance 1000W/m² module temperature 25°C AM=1.5
 NMOT: irradiance of 800W / m², ambient temperature 20°C, and wind speed 1m / s
 The uncertainty of Pmax, Voc, Isc testing is ± 3%



Mechanical Specifications

External Dimension	2096mm*1137mm		
Version	Basic Version	Enhanced Version	High Performance Version
Thickness	3.0mm	3.3mm	3.6mm
Weight	8.0kg	9.3kg	10.7kg
Solar Cell	Mono crystalline 182*91mm, 132 (6*22)		
Frame	/		
GLASS	/		
Junction Box	IP68, 3 diodes, MC4 compatible		
Output Cables	4.0mm ² (IEC), 300mm(+)/300mm(-) or Customized Length		

Temperature characteristic



Pmax Temperature Coefficient	-0.35 %/°C
Voc Temperature Coefficient	-0.26 %/°C
Isc Temperature Coefficient	+0.047 %/°C
Operating Temperature	-40 ~ +85 °C
Nominal module operation temperature	45 ± 2 °C

Package

Packing Unit	40HQ	17.5m platform truck
PCS/CTNS	68	68
Qty of Package	20	32
PCS/Packages	1360	2176