



## TD-(440-460)TRG-108HC

MODULE SIZE

**1762\*1134\*30mm**

POWER OUTPUT RANGE

**440W - 460W**

POSITIVE POWER TOLERANCE

**0 - + 3%**

N-TOPCON MONOCRYSTALLINE MODULE

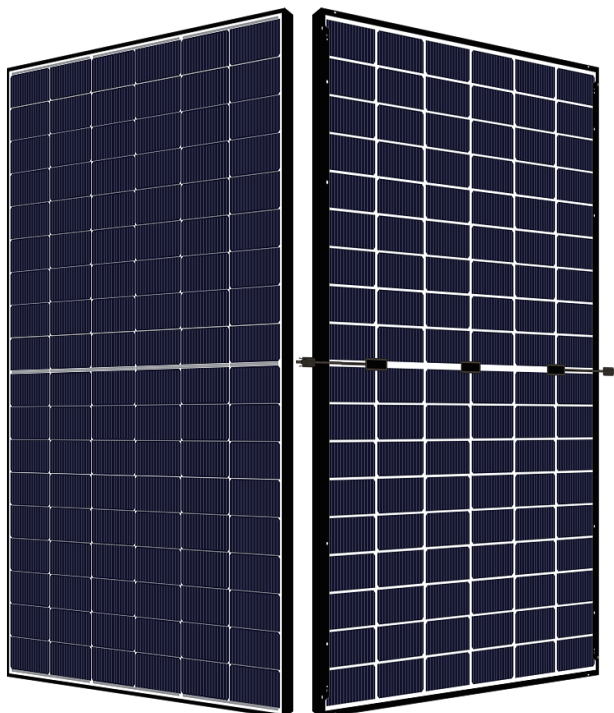
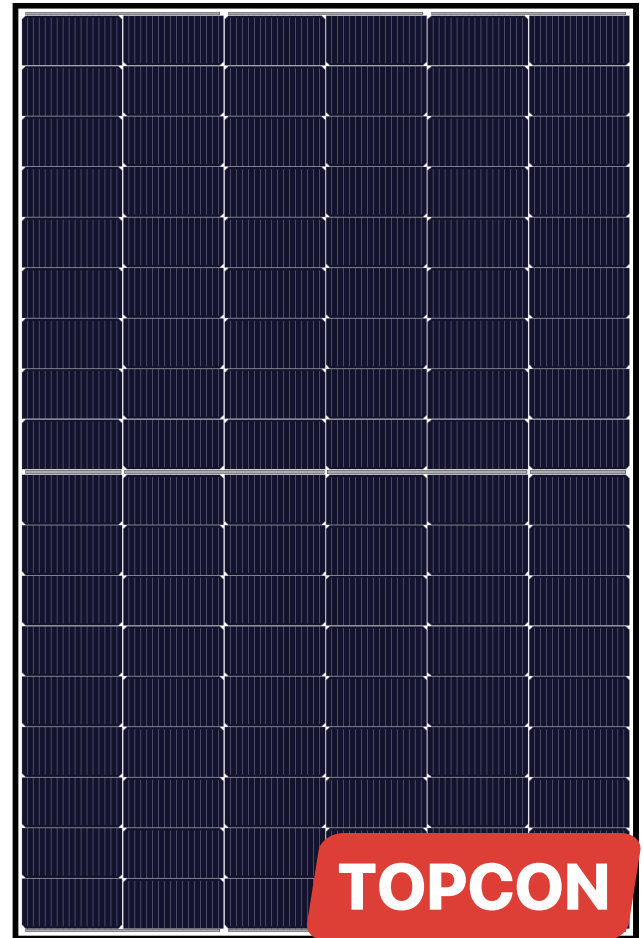
**108 CELL**

MAXIMUM EFFICIENCY

**23.0%**

LINEAR PERFORMANCE WARRANTY

**15 Year Product Warranty**  
**30 Year Linear Power Warranty**



Competitive Low Light Performance



Reduced Power Loss by Minimising the Effect of Shadow Shading



High Density Encapsulation



Multi-Busbar Technology



2400pa Wind Load  
5400pa Snow Load



LCOE BOS  
Reduced BOS & Increased ROI

# TIDE SOLAR

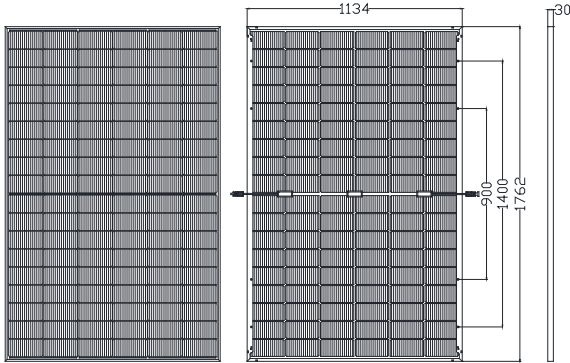
[www.tide-solar.com](http://www.tide-solar.com)

Add: Wind and Solar Industrial Park, Huishan, Wuxi, Jiangsu, China

Tel: +86-510-83885850

E-mail: [info@tide-solar.com](mailto:info@tide-solar.com)

## DIMENSIONS OF PV MODULE



## STRUCTURAL CHARACTERISTICS

Module Size	1762x1134x30mm
Weight	22kg
Cell	single crystal N-topcon 182x94mm(108pieces)
Glass	1.6mm/1.6mm
Frame	anodized aluminum alloy
Junction Box	IP68, 3 diodes
Output Lead	4.0mm <sup>2</sup> 300mm(+)/ 300mm(-) or customized
Mechanical Load	front 5400pa / back 2400pa

## ELECTRICAL CHARACTERISTICS

Component Model	TD-440TRG-108HC	TD-445TRG-108HC	TD-450TRG-108HC	TD-455TRG-108HC	TD-460TRG-108HC
Maximum Power (PMP)	STC 440	STC 445	STC 450	STC 455	STC 460
Open Circuit Voltage (VOC)	38.90	39.10	39.30	39.50	39.70
Short Circuit Current (ISC)	14.31	14.40	14.48	14.56	14.64
Maximum Power Voltage (VMP)	32.47	32.65	32.82	33.00	33.18
Maximum Power Current (IMP)	13.55	13.63	13.71	13.79	13.87
Component Efficiency (η)	22.0	22.3	22.5	22.8	23.0
Power Tolerance	(0, +3%)				
Maximum System Voltage	1500V DC				
Maximum Rated Fuse Current	30A				

STC: Irradiance 1000 W/m<sup>2</sup> module temperature 25 °C AM=1.5

## TEMPERATURE CHARACTERISTICS

Maximum Power Temperature Coefficient	-0.30 % / °C
Temperature Coefficient Of Open Circuit Voltage	-0.25 % / °C
Temperature Coefficient Of Short Circuit Current	+0.046 % / °C
Working Temperature	-40 ~ +85 °C
Nominal Operating Cell Temperature (NOCT)	45 ± 2 °C
Bifacial-Factor	80% ± 10%

## PACKING METHOD

Module Size	1762x1134x30mm
Container	40' HQ
Quantity Per Pallet	36
Number Of Pallets Per Container	26
Quantity Per Container	936

## I-V Curve

