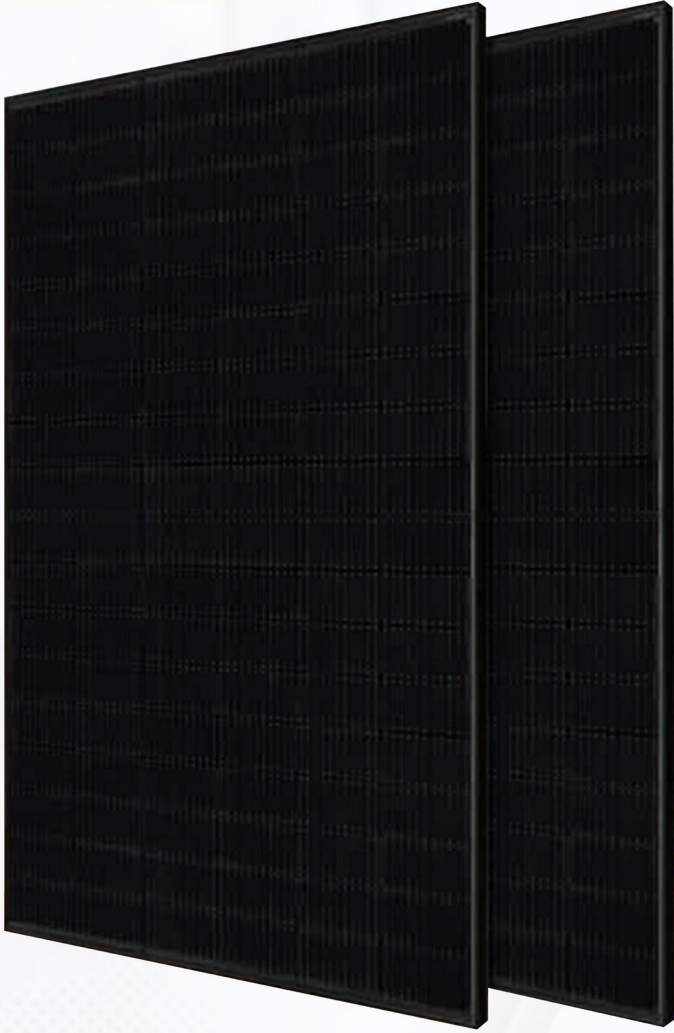


MGS 54M10



390-415W



Superior aesthetics, all-black design



Robust product design for harsh weather conditions



Improved performance in shaded areas



Designed & engineered in the U.S., Made in Dubai

Certifications:



Intertek



Headquarter address

📍 Magnus Green Solar LLC, 360 E 2nd St, STE 820
Los Angeles, CA 90012 USA

☎ +1-888-259-4196

✉ info@magnusgreensolar.com

Manufactured at:

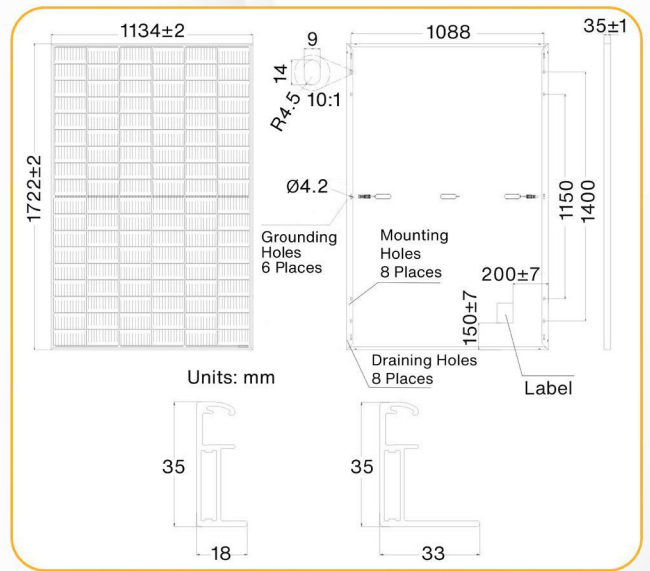
📍 Magnus Green Solar Panels Manufacturing
National Industries Park, Plot TP010505,
Jebel Ali, Dubai, United Arab Emirates.

☎ +971 50 786 3131

✉ info@magnusgreensolar.com

MECHANICAL SPECIFICATIONS

Cell Type	Mono 182x91mm
Weight	21.5kg
Dimensions	1722x1134x35mm (LxWxT)
Cables	Portrait 300mm/Landscape 1200mm/Customized
No. of Cells	108 (6x18)
Glass	3.2mm (0.13inches) AR Coating Tempered Glass
Junction Box	IP68, 3/6 Bypass Diodes
Packing	31pcs/carton, 806pcs/40HQ
Connector Type	Staubli Electrical Connectors AG (PV-KST4-EVO2/XY_UR)
Frame	Anodized Aluminium Alloy
Cable Cross-section Size	TUV: 4mm ² (0.006inches ²)/UL: 12AWG



ELECTRICAL SPECIFICATIONS

Module Type	MGS-390W-M54H		MGS-395W-M54H		MGS-400W-M54H		MGS-405W-M54H		MGS-410W-M54H		MGS-415W-M54H	
	-M10		-M10		-M10		-M10		-M10		-M10	
Testing Condition	STC	NOCT	STC	NOCT	STC	NOCT	STC	NOCT	STC	NOCT	STC	NOCT
Open Circuit Voltage (Voc/V)	36.9	34.6	36.90	34.8	36.98	34.9	37.2	35.1	37.3	35.2	37.5	35.4
Maximum Power Voltage (Vmpp/V)	30.6	28.9	30.32	29.1	30.42	29.3	31.2	29.5	31.4	29.7	31.6	29.9
Short Circuit Current (Isc/A)	13.61	10.89	13.71	10.96	13.78	11.03	13.87	11.10	13.95	11.16	14.02	11.22
Maximum Power Current (Impp/A)	12.75	10.18	13.03	10.25	13.15	10.32	12.98	10.38	13.06	10.43	13.14	10.50
Rated Output (Pmp/Wp)	390	294	395	298	400	302	405	306	410	310	415	314
Module Efficiency (%)	19.98%		20.23%		20.49%		20.74%		21.00%		21.26%	
Power Tolerance (W)	±3%		±3%		±3%		±3%		±3%		±3%	
Tolerance of Rating Pmax/Isc/Voc%	±3%/±4%/±3%											

STC: Irradiance 1000W/m², Cell Temperature 25°C, Air Mass AM1.5 NOCT: Irradiance at 800W/m², Ambient Temperature 20°C, Air Mass AM1.5, Wind Speed 1m/s

Binning Tolerance: 0 to +5W

MAXIMUM RATINGS

Maximum System Voltage	1500V DC
Operating Temperature	-40°C~+85°C
Maximum Series Fuse	25A
Safety Class	II
Fire Rating	Class C
Static Loading	Snow Loading: 5400Pa/ Wind Loading: 2400Pa
Conductivity at Ground	≤0.1Ω
Resistance	≥100MΩ

TEMPERATURE CHARACTERISTICS

NOCT Temperature	45°C±2°C
Temperature Coefficient (Pmax)	-0.37%/°C
Temperature Coefficient (Voc)	-0.29%/°C
Temperature Coefficient (Isc)	0.05%/°C

PERFORMANCE WARRANTY

Max Power Degradation 0.5%/Year
97.5% At The End of 1 st Year
93% At The End of 10 th Year
85.5% At The End of 25 th Year

CURVE & TEMPERATURE DEPENDENCE

