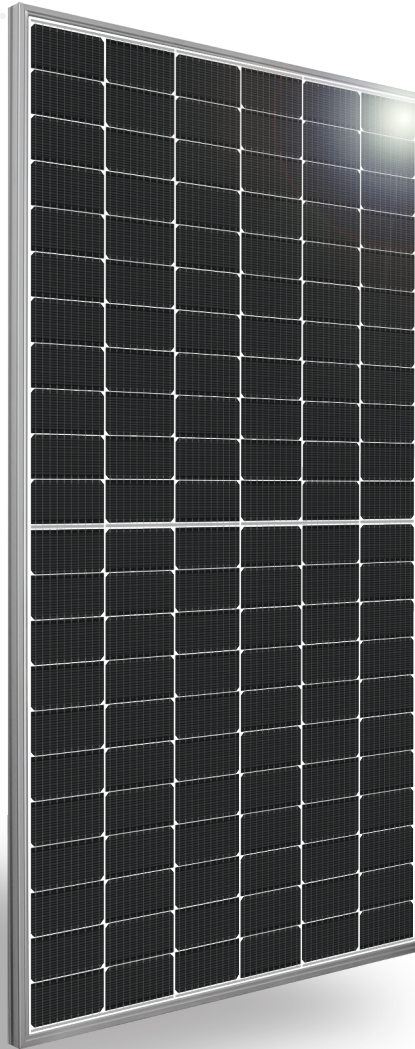


SIL-520 QM



INTRODUCING NEXT-GENERATION N-TYPE CELL TECHNOLOGY

- Exclusively Manufactured in the USA
- Increased Performance in High Temperatures
- Enhanced Durability
- Lower Temperature Coefficient
- Reduced Degradation Rate
- Industry-Leading Warranty



SILFABSOLAR.COM



ELECTRICAL SPECIFICATIONS		520 QM	
Test Conditions		STC	NOTC
Module Power (Pmax)	Wp	520	384
Maximum power voltage (Vpmax)	V	40.48	37.24
Maximum power current (Ipmax)	A	12.85	10.31
Open circuit voltage (Voc)	V	47.52	43.71
Short circuit current (Isc)	A	13.65	10.96
Module efficiency	%	21.9%	20.2%
Maximum system voltage (VDC)	V		1500
Series fuse rating	A		25
Power Tolerance	Wp		0 to +10

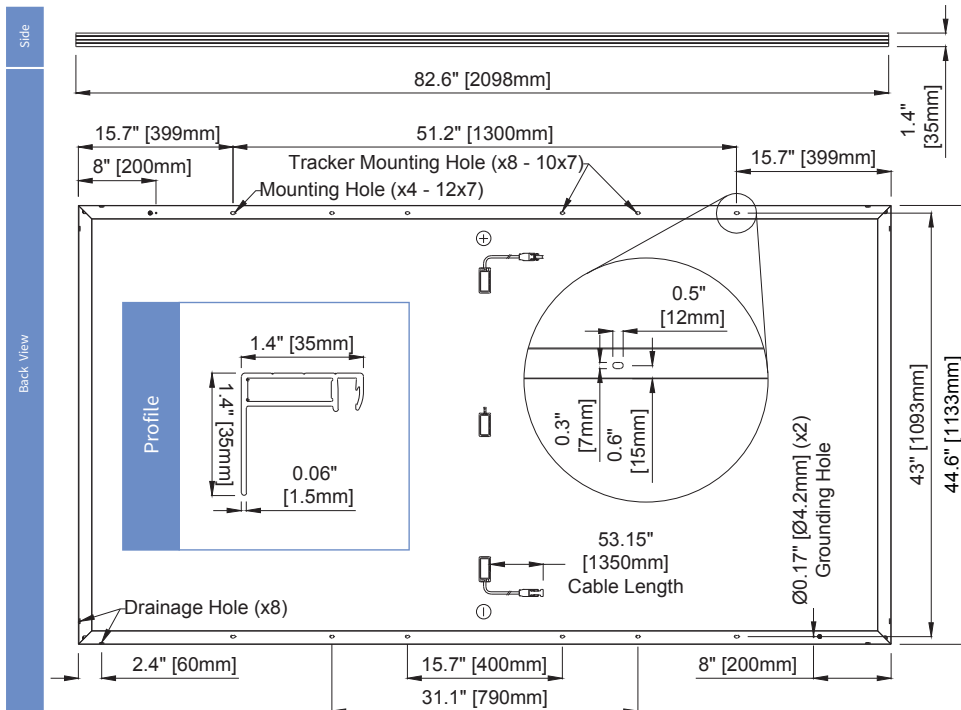
Measurement conditions: STC 1000 W/m² • AM 1.5 • Temperature 25 °C • NOCT 800 W/m² • AM 1.5 • Measurement uncertainty ≤ 3%
Sun simulator calibration reference modules from Fraunhofer Institute. Electrical characteristics may vary by ±5% and power by 0 to +10W.

MECHANICAL PROPERTIES / COMPONENTS	METRIC	IMPERIAL
Module weight	26.2kg ± 0.2kg	57.8lbs ± 0.4lbs
Dimensions (H x L x D)	2098 mm x 1133 mm x 35 mm	82.6 in x 44.6 in x 1.37 in
Maximum surface load (wind/snow)*	2400 Pa rear load / 5400 Pa front load	50.1 lb/ft ² rear load / 112.8 lb/ft ² front load
Hail impact resistance	Ø 25 mm at 83 km/h	Ø 1 in at 51.6 mph
Cells	132 Half cells - N-Type Silicon solar cell 182 mm x 91 mm	132 Half cells - N-Type Silicon solar cell 3.58 x 7.16 in
Glass	3.2 mm high transmittance, tempered, DSM antireflective coating	0.126 in high transmittance, tempered, DSM antireflective coating
Cables and connectors (refer to installation manual)	1350 mm, Ø 5.7 mm, EVO2 from Staubli	53.15 in, Ø 0.22 in (12AWG), EVO2 from Staubli
Backsheet	High durability, superior hydrolysis and UV resistance, multi-layer dielectric film, fluorine-free PV white backsheet	
Frame	Anodized Aluminum (Silver)	
Junction Box	UL 3730 Certified, IEC 62790 Certified, IP68 rated, three diodes	

TEMPERATURE RATINGS		WARRANTIES	
Temperature Coefficient Isc	+0.04 %/°C	Module product workmanship warranty	25 years**
Temperature Coefficient Voc	-0.24 %/°C	Linear power performance guarantee	30 years
Temperature Coefficient Pmax	-0.29 %/°C		≥ 98% end 1st yr
NOCT (± 2°C)	45 °C		≥ 94.7% end 12th yr
Operating temperature	-40/+85 °C		≥ 90.8% end 25th yr
			≥ 89.3% end 30th yr

CERTIFICATIONS		SHIPPING SPECS	
Product	UL 61215***, UL 61730***, CSA C22.2#61730***, IEC 61215***, IEC 61730***, IEC 61701 (Salt Mist Corrosion), IEC 62716 (Ammonia Corrosion), CEC Listing***, UL Fire Rating: Type 1	Modules Per Pallet:	29 or 29 (California)
Factory	ISO9001:2015	Pallets Per Truck	24 or 23 (California)
		Modules Per Truck	696 or 667 (California)

- * ⚠ Warning. Read the Safety and Installation Manual for mounting specifications and before handling, installing and operating modules.
- ** 12 year extendable to 25 years subject to registration and conditions outlined under "Warranty" at silfabsolar.com
- *** PAN files generated from 3rd party performance data are available for download at: silfabsolar.com/downloads
- *** Certification and CEC listing in progress.



SILFAB SOLAR INC.

1770 Port Drive
Burlington WA 98233 USA
T +1 360.569.4733
info@silfabsolar.com
SILFABSOLAR.COM

7149 Logistics Lane
Fort Mill SC 29715 USA
T +1 839.400.4338

240 Courtneypark Drive East
Mississauga ON L5T 2S5 Canada
T +1 905.255.2501
F +1 905.696.0267

Silfab - SIL-520-QM-20240225
No reproduction of any kind is allowed without permission. Data and information is subject to modifications without notice. © Silfab Solar Inc., 2022. Silfab Solar® is a registered trademark of Silfab Solar Inc.