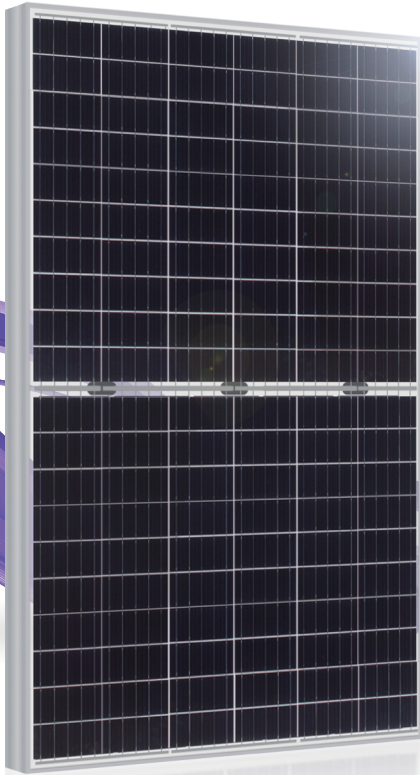




**PEACH BIFI**

D2K\_T7A / 120 cells  
335W - 345 W  
Mono-Crystalline Bifacial PV Module

URE Peach module uses URE state-of-the-art cell cut technology on high efficiency p-PERC mono-crystalline bifacial cell, and advanced module manufacturing experiences.



## Key Features



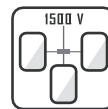
**High Efficiency**  
High module conversion efficiency up to 20.23%



**100% EL inline inspection**  
Better module reliability



**Withstand heavy loading**  
Front load 5400 Pa & rear load 2400 Pa



**Design for 1500 VDC**  
Reduce the system BOS effectively



**High Durability**  
High resistance to salt mist & PID design  
Pass the highest level  
(IEC 61701/ IEC 60068-2-52 Severity 8)



**NO Water pollution concern**  
PASS the water quality standard by E.P.A



## Electrical Data

Model		Bifacial Gain			Bifacial Gain			Bifacial Gain		
		D2K335T7A	5%	10%	D2K340T7A	5%	10%	D2K345T7A	5%	10%
Maximum Rating Power (Pmax)	[W]	335	352	369	340	357	374	345	362	380
Module Efficiency	[%]	19.64	20.62	21.60	19.94	20.94	21.93	20.23	21.24	22.25
Open Circuit Voltage (Voc)	[V]	40.40	40.40	40.40	40.46	40.46	40.46	40.52	40.52	40.52
Maximum Power Voltage	[V]	33.50	33.50	33.50	33.60	33.60	33.60	33.70	33.70	33.70
Short Circuit Current (Isc)	[A]	10.63	11.16	11.69	10.74	11.28	11.81	10.85	11.28	11.81
Maximum Power Current	[A]	10.00	10.50	11.00	10.12	10.63	11.13	10.24	10.63	11.13
Positive Power Tolerance		0~3%								

\*Standard Test Condition (STC): Cell Temperature 25 °C, Irradiance 1000 W/m<sup>2</sup>, AM 1.5

\*Values without tolerance are typical numbers. Measurement tolerance: ± 3%

## Mechanical Data

Item	Specification
Dimensions	1702 mm (L) <sup>1</sup> x 1002 mm (W) <sup>1</sup> x 40 mm (D) <sup>2</sup> / 67.01" (L) <sup>1</sup> x 39.45" (W) <sup>1</sup> x 1.57" (D) <sup>2</sup>
Weight	19.6kg / 43.21 lbs
Solar Cell	120 half-cut monocrystalline 6" silicon cells
Front Glass	Anti-reflective tempered solar glass, 3.2mm thickness
Cell Encapsulation	EVA (Ethylene-Vinyl-Acetate)
Back Cover	Composite film, transparent
Junction Box	IP 68 rated
Frame	Anodized aluminum frame, original
Packaging Configuration	26 pcs Per Pallet, 784 pcs per 40' HQ container

1 : With assembly tolerance of ± 2 mm [ ± 0.08" ]

2 : With assembly tolerance of ± 0.8 mm [ ± 0.03" ]

## Operating Conditions

Item	Specification
Mechanical Load	5400 Pa
Maximum System Voltage	1500 VDC
Series Fuse Rating	20 A
Operating Temperature	-40 to 85 °C

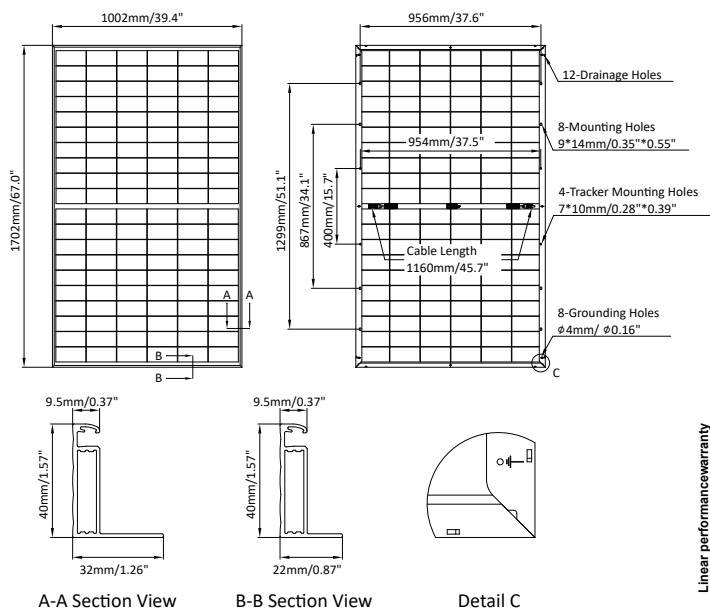
## Temperature Characteristics

Item	Specification
Nominal Module Operating Temperature	42°C ± 2°C
Temperature Coefficient of Isc	0.06 % / °C
Temperature Coefficient of Voc	-0.31 % / °C
Temperature Coefficient of Pmax	-0.39 % / °C

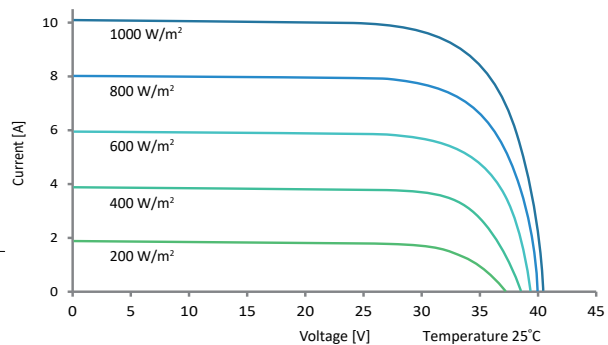
\*Nominal module operating temperature (NMOT): Air mass AM 1.5, irradiance 800W/m<sup>2</sup>, temperature 20°C, windspeed 1 m/s.

\*Reduction in efficiency from 1000W/m<sup>2</sup> to 200W/m<sup>2</sup> at 25°C: 3.5 ± 2%.

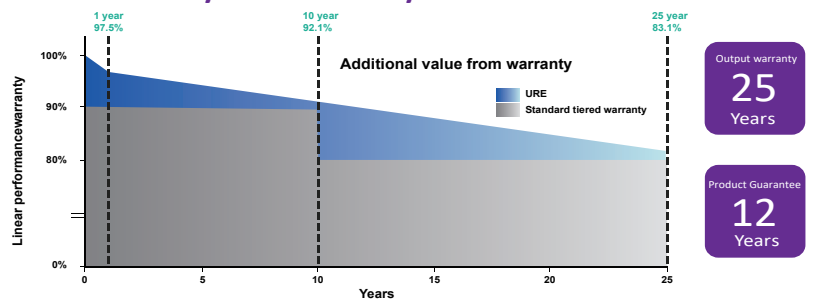
## Engineering Drawing (mm)



## Dependence on Irradiance



## Reliability with Warranty



For more information, please visit us at [www.urecorp.com](http://www.urecorp.com)