

GS-SMART

CARPORT MOUNTING SYSTEM

PV Mounting System Solution



Easy to assemble



Convenient maintenance



Safe and reliable



Nice appearance

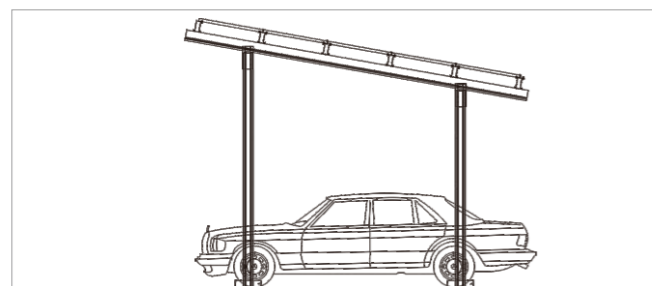
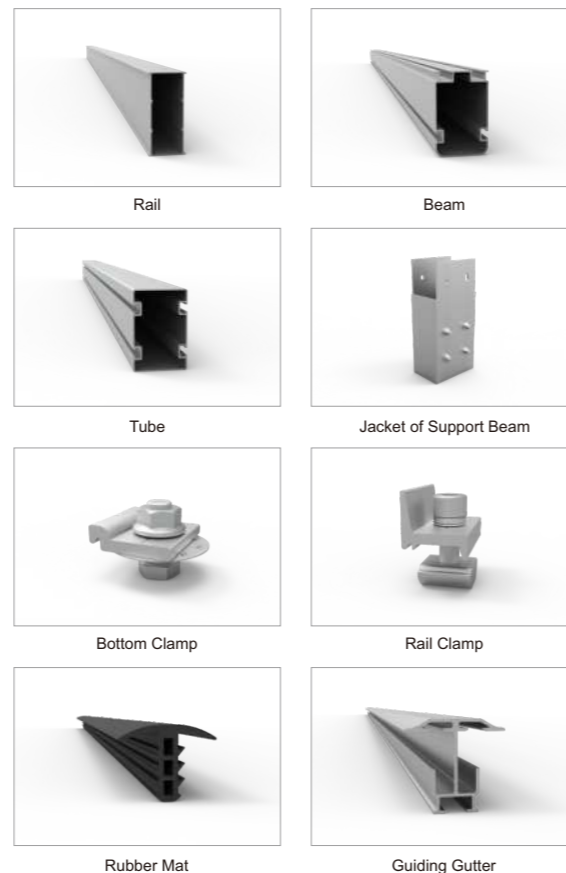
**The first in China! Photovoltaic carport
Aluminum alloy profiles obtained JIS H
4100 certificate**

Type II Carport Mounting System

Aluminum alloy



Installation site	Ground
Inclination	0-60°
Construction height	<9m
Maximum wind speed	<60m/s
Maximum snow cover	<200cm
Material	High-strength aluminum alloy & A2-70
Surface Treatment	Anodizing or electrophoresis
Color	Silver or customized
Foundation	Concrete Foundation Ground Screw Foundation
Reference Standards	ASCE7-10 EN1991 AS/NZS1170 Other
Warranty	10 Years



Project Information

PV MODULE INFORMATION		PV MODULE INFORMATION	
Size	1722*1134*30mm	Module Inclination (in degree)	5 deg
Module arrangement	5 rows, 7 columns	Module Power	415W
Number of installations	35 pcs	Capacity	14525W

Arrangement



Component List

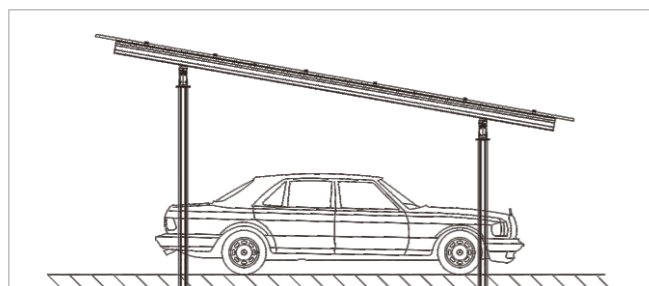
Description	Material	Specification	QTY
Rail	AL 6005-T5	5300mm	12 pcs
Rail Splice	AL 6005-T5	500mm	6 pcs
Girder Clamp	AL 6005-T5&SUS 304	40mm	72 pcs
Inter Clamp	AL 6005-T5&SUS 304	30mm	56 pcs
End Clamp	AL 6005-T5&SUS 304	30mm	28 pcs
Beam	AL 6005-T5	4800mm	3 pcs
Jacket of Support Beam	AL 6005-T5&SUS 304	350mm	6 pcs
Tube	AL 6005-T5	3250mm	3 pcs
Tube	AL 6005-T5	3530mm	3 pcs
Support Beam Cap	Q235	100mm	6 pcs
T Roof 840	Cold Rolled Steel	5000mm	15 pcs
T Hex Screw kit	SUS 304	M10*35	24 pcs
Grounding Clip	SUS 304	34*34mm	24 pcs
Grounding Lug	AL 6005-T5 & SUS 304	20mm	6 pcs

Double Column Waterproof Carport Mounting System

Aluminum alloy



Installation site	Ground
Inclination	0-60°
Construction height	<9m
Maximum wind speed	<60m/s
Maximum snow cover	<200cm
Material	High-strength aluminum alloy & A2-70
Surface Treatment	Anodizing or electrophoresis
Color	Silver or customized
Foundation	Concrete Foundation Ground Screw Foundation
Reference Standards	ASCE7-10 EN1991 AS/NZS1170 Other
Warranty	10 Years



Project Information

PV MODULE INFORMATION		PV MODULE INFORMATION	
Size	2278*1134*35mm	Module Inclination (in degree)	5 deg
Module arrangement	3 rows, 10 columns	Module Power	545W
Number of installations	30 pcs	Capacity	16350W

Arrangement



Component List

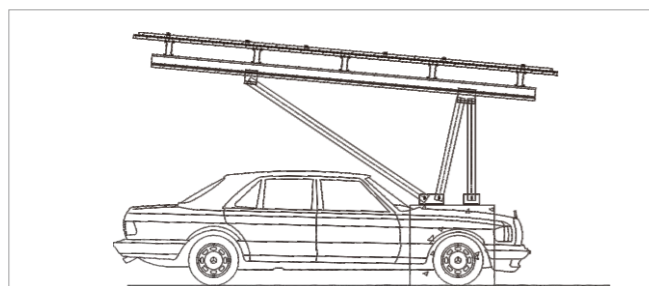
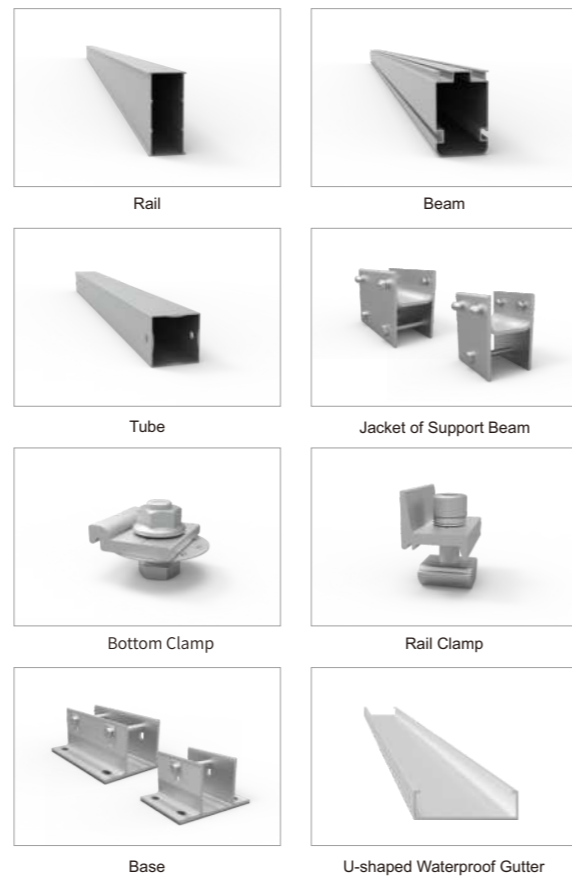
Description	Material	Specification	QTY
Waterproof Rail	AL 6005-T5	6300mm	11 pcs
U-shaped Waterproof Gutter	AL 6005-T5	1064mm	20 pcs
Rail Clamp	AL 6005-T5&SUS 304	40mm	88 pcs
Inter Clamp	AL 6005-T5&SUS 304	35mm	54 pcs
End Clamp	AL 6005-T5&SUS 304	35mm	12 pcs
Beam	AL 6005-T5	5900mm	4 pcs
Support Beam Splice	AL 6005-T5	300mm	4 pcs
Head Base	AL 6005-T5&SUS 304	90mm	6 pcs
Bottom Connector	AL 6005-T5&SUS 304	60mm	6 pcs
Open post	Q235	2700mm	3 pcs
Open post	Q235	3450mm	3 pcs
Grounding Clip	SUS 304	25*16*23mm	54 pcs
Grounding Lug	SUS 304	20mm	2 pcs

CAR Waterproof Carport Mounting System

Aluminum alloy



Installation site	Ground
Inclination	0-60°
Construction height	<9m
Maximum wind speed	<60m/s
Maximum snow cover	<200cm
Material	High-strength aluminum alloy & A2-70
Surface Treatment	Anodizing or electrophoresis
Color	Silver or customized
Foundation	Concrete Foundation Ground Screw Foundation
Reference Standards	ASCE7-10 EN1991 AS/NZS1170 Other
Warranty	10 Years



Project Information

PV MODULE INFORMATION		PV MODULE INFORMATION	
Size	1722*1134*30mm	Module Inclination (in degree)	10 deg
Module arrangement	3 rows, 14 columns	Module Power	425W
Number of installations	42 pcs	Capacity	17850W

Arrangement



Component List

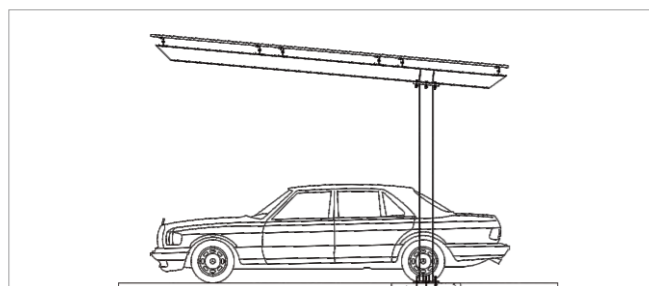
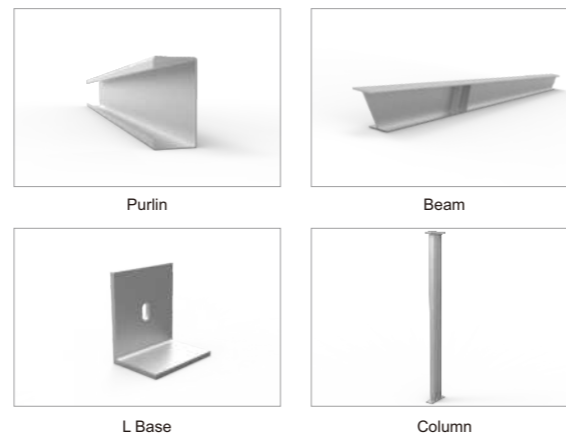
Description	Material	Specification	QTY
Rail	AL 6005-T5	5600mm	10 pcs
Rail	AL 6005-T5	5300mm	5 pcs
Rail Splice	AL 6005-T5	500mm	10 pcs
Waterproof Rail	AL 6005-T5	5300mm	15 pcs
U-shaped Waterproof Gutter	AL 6005-T5	1064mm	28 pcs
Bottom Clamp	AL 6005-T5&SUS 304	60mm	150 pcs
Inter Clamp	AL 6005-T5&SUS 304	30mm	78 pcs
End Clamp	AL 6005-T5&SUS 304	30mm	12 pcs
Rail Clamp	AL 6005-T5&SUS 304	40mm	80 pcs
D-Module	AL 6005-T5	20mm	170 pcs
Beam	AL 6005-T5	4800mm	4 pcs
Jacket 1#	AL 6005-T5&SUS 304	150mm	4 pcs
Jacket 2#	AL 6005-T5&SUS 304	220mm	4 pcs
Tube	AL 6005-T5	2670mm	4 pcs
Tube	AL 6005-T5	1310mm	4 pcs
Tube	AL 6005-T5	1260mm	4 pcs
Front and Bottom Base	AL 6005-T5&SUS 304	200mm/300mm	4 pcs
Grounding Clip	SUS 304	25*16*23mm	42 pcs
Grounding Lug	SUS 304	20mm	7 pcs

Single Column Carport Mounting System

Carbon steel



Installation site	Ground
Inclination	0-60°
Construction height	<9m
Maximum wind speed	<60m/s
Maximum snow cover	<200cm
Material	Carbon steel & alloy steel
Color	Silver or customized
Surface Treatment	Hot-dip galvanized Aluminium-Zinc-Magnesium coated
Foundation	Concrete Foundation Ground Screw Foundation
Reference Standards	ASCE7-10 EN1991 AS/NZS1170 Other
Warranty	10 Years



Project Information

PV MODULE INFORMATION		PV MODULE INFORMATION	
Size	1719*1134*30mm	Module Inclination (in degree)	5 deg
Module arrangement	3 rows, 5 columns	Module Power	415W
Number of installations	15 pcs	Capacity	6225W

Arrangement



Component List

Description	Material	Specification	QTY
H-shaped Steel Column	Q235B	2850mm	2 pcs
Base Plate	Q235B	370*125*25mm	2 pcs
T Roof	Q235B	370*125*25mm	2 pcs
Ribbed Plate	Q235B	100*50*10 mm	12 pcs
H-shaped Steel Beam	Q235B	5100mm	2 pcs
Ribbed Plate	Q235B	180*45*10mm	8 pcs
L Base	Q235B	110*70*6*100mm	12 pcs
Purlin	Q235B	6100mm	6 pcs