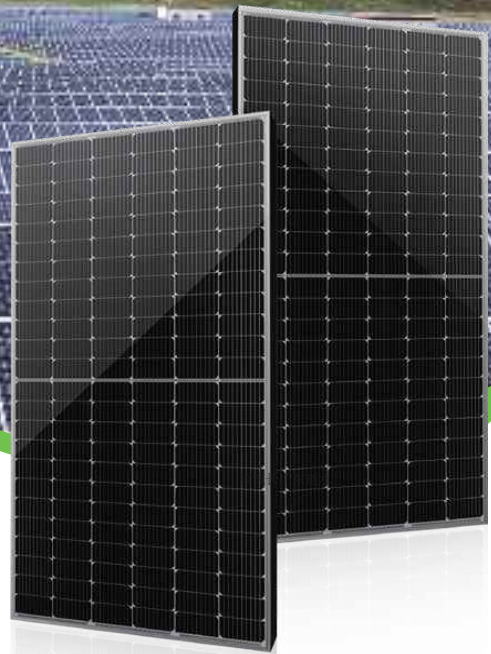




Enjoy Sunshine, Enjoy Life



# MONOCRYSTALLINE SOLAR MODULE

## MONOCRYSTALLINE 182 HALF CELL SERIES

### The solar panel characteristics



**1500 Voltage**  
1500V system voltage design, compared with 1000V system greatly reduces BOS cost.



**10BB**  
More uniform current collection ability, reduce the current heat loss of the battery inside the module; Beautiful appearance, more suitable for roof installation.



**PID Resistant**  
Tested in accordance to the draft standard IEC 62804, our PV modules have demonstrated resistance against PID(Potential Induced Degradation), which translates to security for your investment.



**Low light performance**  
Through the use of excellent glass and battery surface velvet technology to achieve low light environment excellent performance.



**Load Capacity**  
The whole assembly has been certified with wind load of 2400Pa and snow load of 5400Pa, pass extra 8000Pa snow resistance.



**Customizable**  
Solar panels can be customized as your requirements.

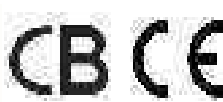
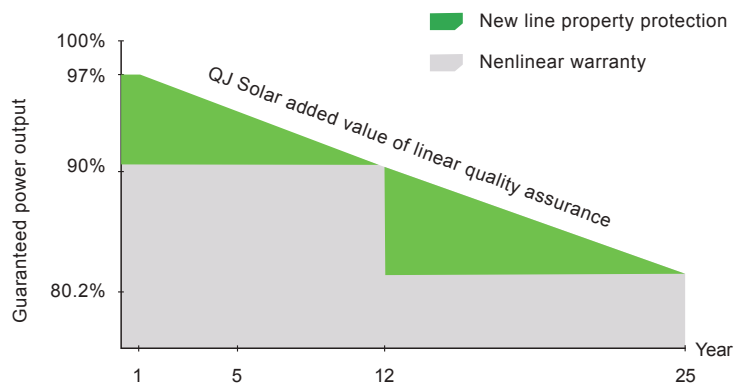
### QJ Solar linear warranty



**12 Years**  
Limited Product Warranty



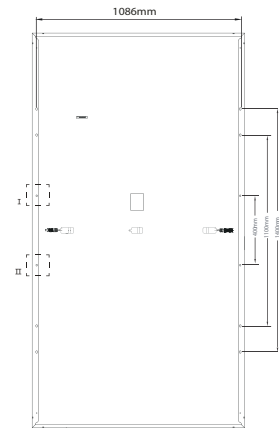
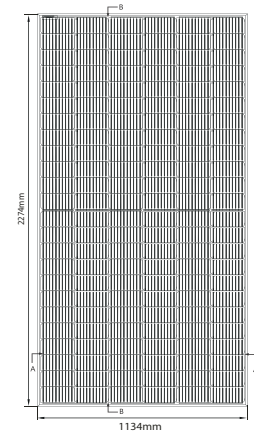
**25 Years**  
Performance Warranty



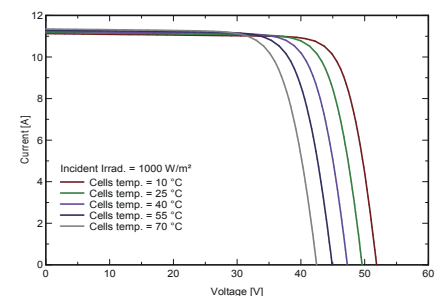
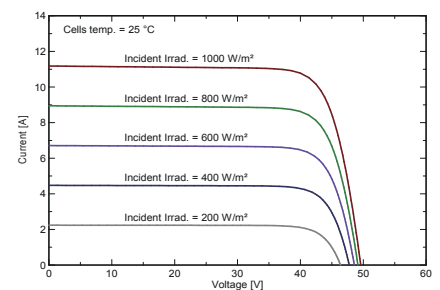
# MONOCRYSTALLINE 182 HALF CELL SERIES



Module Diagram:



Electrical Curves:



## ELECTRICAL PERFORMANCE

Module Type			QJM525 -144H(10BB)	QJM530 -144H(10BB)	QJM535 -144H(10BB)	QJM540 -144H(10BB)	QJM545 -144H(10BB)	QJM550 -144H(10BB)
Power output	$P_{max}$	<b>Wp</b>	525	530	535	540	545	550
Power output tolerance	$\Delta P_{max}$	<b>W</b>	0 + 3					
Voltage at Pmax	$V_{mpp}$	<b>V</b>	41.8	41.84	41.88	41.96	42.05	42.13
Current at Pmax	$I_{mpp}$	<b>A</b>	12.56	12.69	12.78	12.87	12.96	13.05
Open-circuit voltage	$V_{oc}$	<b>V</b>	49.3	49.4	49.5	49.6	49.7	49.8
Short-circuit current	$I_{sc}$	<b>A</b>	13.44	13.58	13.67	13.78	13.87	13.97
Module Efficiency	<b>Eff.</b>	<b>%</b>	20.4	20.6	20.8	21	21.2	21.4

## TEMPERATURE & MAXIMUM RATINGS

Temperature coefficient of Pmax	-0.39%/C
Temperature coefficient of Voc	-0.32%/C
Temperature coefficient of Isc	0.055 %/C
Operational Temperature	-45 C ~ +85 C
Maximum System Voltage	1000/1500VDC
Max Series Fuse Rating	25A

## MECHANICAL CHARACTERISTICS

Front cover (material / thickness)	low-iron, high transmission, tempered AR coated glass, 3.2mm
Backsheet (color)	white/black
Solar Cell (quantity / material / dimension)	144(6*12+6*12), monocrystalline, 10BB/9BB, 182*91mm
Frame (material / color)	anodized aluminum alloy, silver/black
Junction box ( protection degree)	IP 68, 3 Schottky bypass diodes
Cables & Plug connectors	300mm, 4mm <sup>2</sup> & MC4 compatible
Module Dimensions (L / W / H)	2274*1134*35/2278*1133*35/2279*1134*35/2284*1134*35/2285*1134*35mm
Module Weight	26kg

## PACKING DETAILS

Container	20' GP	40' GP
Pieces per pallet	31PCS+4PCS	31PCS
Pallets per container	4P	20P
Pieces per container	140PCS	620PCS

**QJ SOLAR**  
**Cixi City Rixing Electronics Co., Ltd.**

Add: No. 69, Mingde Road, Zhouxiang Town, Cixi City, Ningbo City, Zhejiang Province, China  
Tel: 86-574-63441748 Fax: 86-574-63456148  
Email: sales@qjsolar.com Web.: www.qjsolar.com

