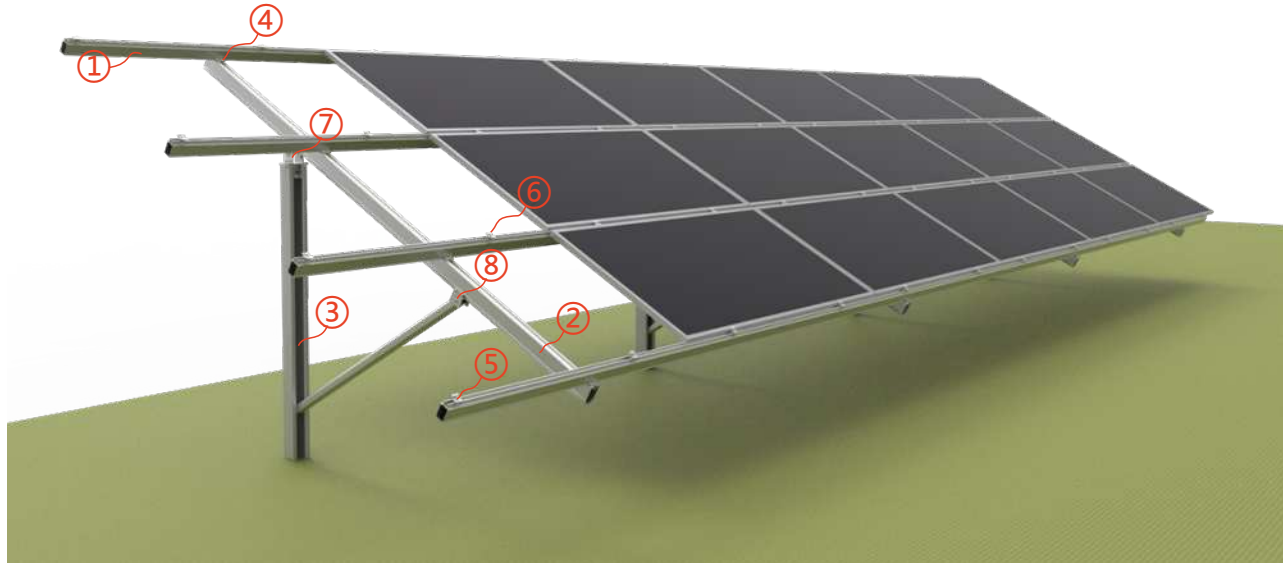
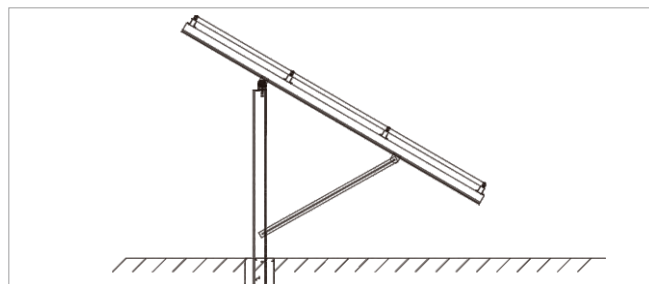
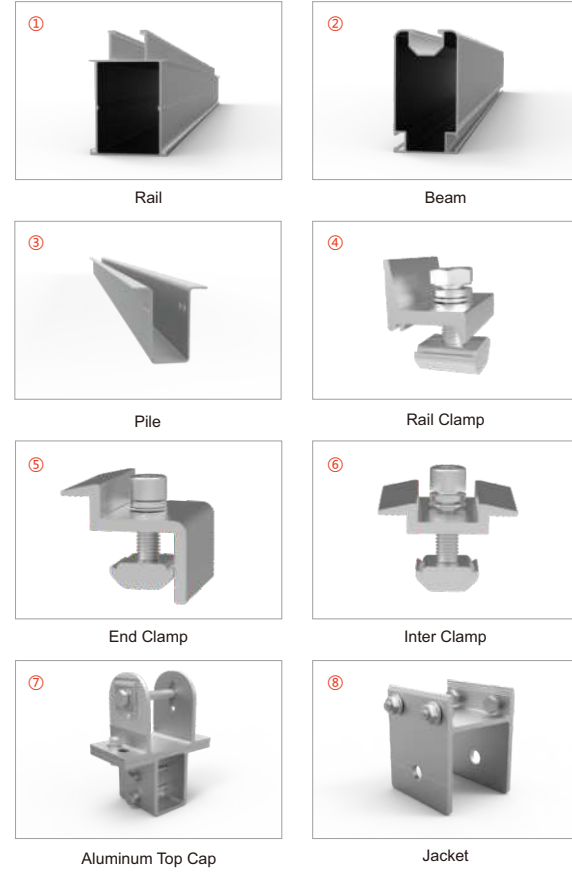


Single Column Piling Ground Mounting System

Landscape Placement (Aluminum alloy)



Installation site	Ground
Inclination	0-45°
Construction height	<9m
Maximum wind speed	<60m/s
Maximum snow cover	<200cm
Material	High-strength aluminum alloy & A2-70
C-shaped steel material	Carbon steel SS400
Color	Silver or customized
Surface Treatment	Aluminum alloy anodizing Carbon steel hot-dip galvanizing
Foundation	Concrete Pre-buried Foundation C-shaped Pile Foundation
Reference Standards	ASCE7-10 EN1991 AS/NZS1170 Other
Warranty	10 Years



Project Information

PV MODULE INFORMATION		DESIGN CONDITION	
Size	2256*1133*35mm	Clearance	500mm
Module Power	540W	North-south Span	2757mm
Module Inclination (in degree)	10 deg	East-west Span	3600mm
Module arrangement	3 rows, 6 columns	Capacity	9720W
Number of installations	18 pcs	Maximum wind speed	37m/s

Arrangement

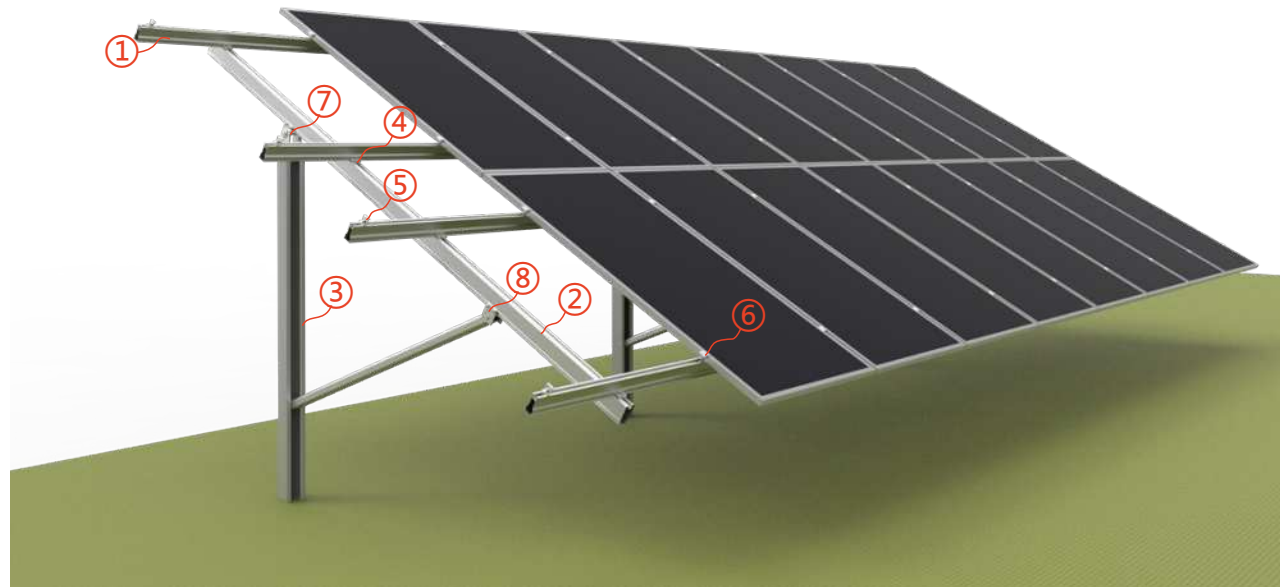


Component List

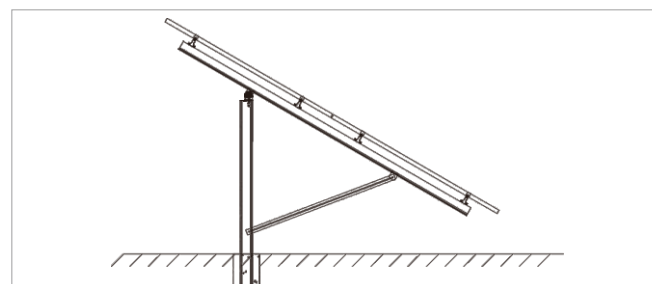
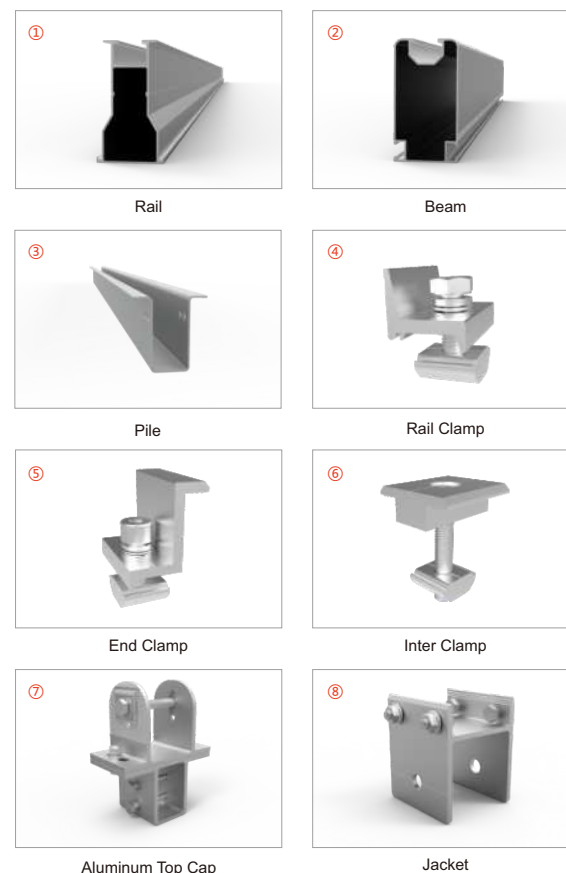
Description	Material	Specification	QTY
Rail	AL 6005-T5	4600mm	8 pcs
Rail	AL 6005-T5	3600mm	4 pcs
Rail Splice	AL 6005-T5	200mm	8 pcs
Rail Clamp	AL 6005-T5&SUS 304	40mm	16 pcs
Inter Clamp	AL 6005-T5&SUS 304	35mm	24 pcs
End Clamp	AL 6005-T5&SUS 304	35mm	24 pcs
Beam	AL 6005-T5&SUS 304	3600mm	4 pcs
Aluminum Top Cap	AL 6005-T5&SUS 304	150*120*80mm	8 pcs
Tube	AL 6005-T5	1640mm	4 pcs
Open post	Q235	3550mm	4 pcs
Grounding Clip	SUS 304	34*34mm	24 pcs
Grounding Lug	SUS 304	20mm	2 pcs

Single Column Piling Ground Mounting System

Portrait Placement (Aluminum alloy)



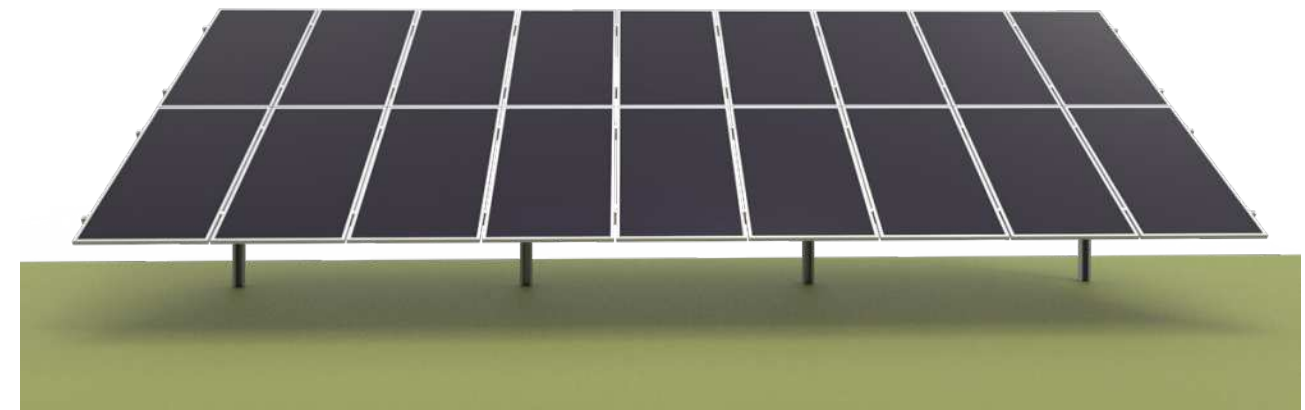
Installation site	Ground
Inclination	0-45°
Construction height	<9m
Maximum wind speed	<60m/s
Maximum snow cover	<200cm
Material	High-strength aluminum alloy & A2-70
C-shaped steel material	Carbon steel SS400
Color	Silver or customized
Surface Treatment	Aluminum alloy anodizing Carbon steel hot-dip galvanizing
Foundation	Concrete Pre-buried Foundation C-shaped Pile Foundation
Reference Standards	ASCE7-10 EN1991 AS/NZS1170 Other
Warranty	10 Years



Project Information

PV MODULE INFORMATION		DESIGN CONDITION	
Size	2187*1102*35mm	Clearance	500mm
Module Power	495W	North-south Span	2220mm
Module Inclination (in degree)	30 deg	East-west Span	3000mm
Module arrangement	2 rows, 9 columns	Capacity	8910W
Number of installations	18 pcs	Maximum wind speed	37m/s

Arrangement

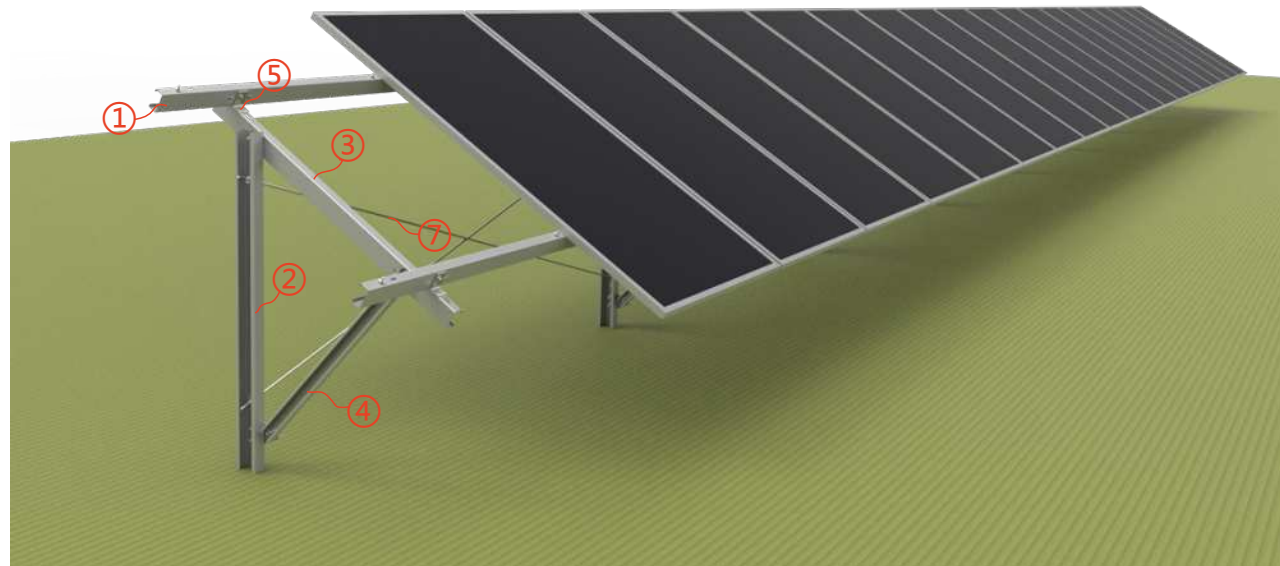


Component List

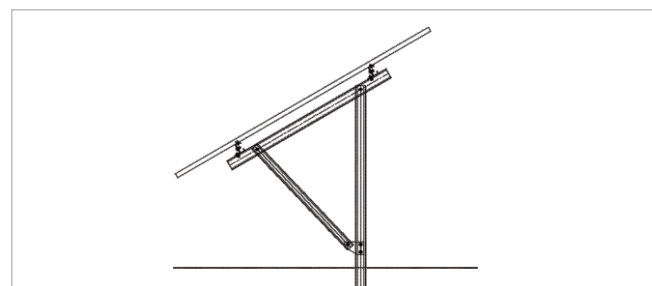
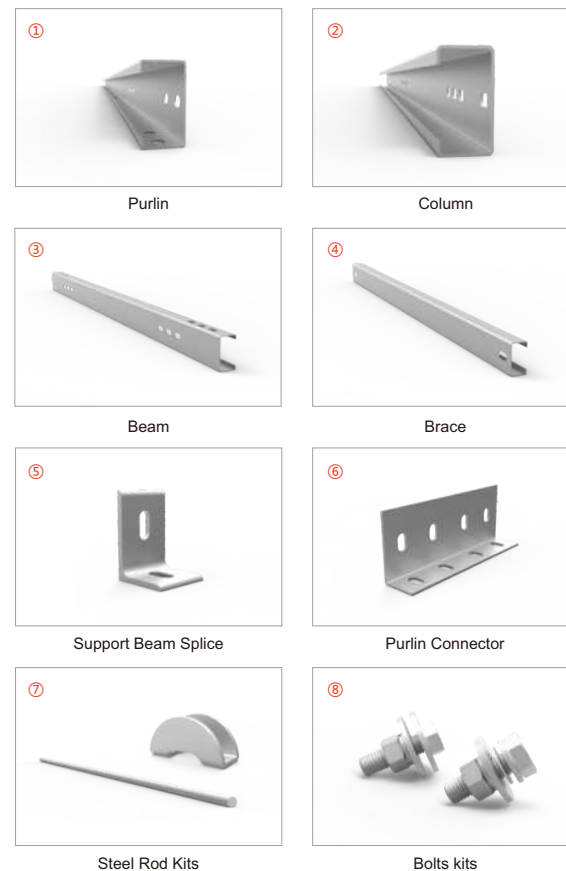
Description	Material	Specification	QTY
Rail	AL 6005-T5	3400mm	12 pcs
Rail Splice	AL 6005-T5	200mm	8 pcs
Rail Clamp	AL 6005-T5&SUS 304	60mm	32 pcs
Inter Clamp	AL 6005-T5&SUS 304	35mm	32 pcs
End Clamp	AL 6005-T5&SUS 304	35mm	8 pcs
Beam	AL 6005-T5&SUS 304	3800mm	4 pcs
Aluminum Top Cap	AL 6005-T5&SUS 304	150*120*80mm	8 pcs
Tube	AL 6005-T5	1810mm	4 pcs
Open post	Q235	3550mm	4 pcs
Grounding Clip	SUS 304	34*34mm	20 pcs
Grounding Lug	SUS 304	20mm	4 pcs

Single Column Piling Ground Mounting System

Portrait Placement (Carbon steel)



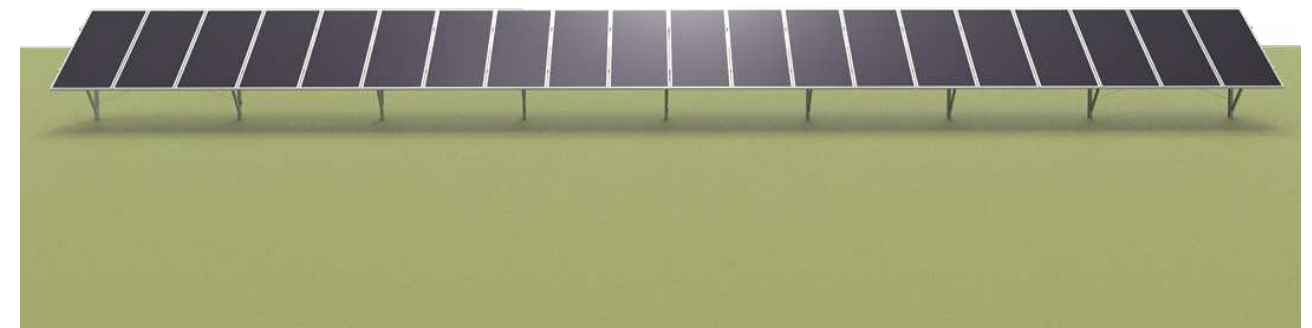
Installation site	Ground
Inclination	0-45°
Construction height	<9m
Maximum wind speed	<60m/s
Maximum snow cover	<200cm
Material	Carbon steel & Alloy steel
Color	Silver or customized
Surface Treatment	Hot-dip galvanized or Aluminium-Zinc-Magnesium coated
Foundation	Concrete Foundation Ground Screw Foundation Pile Foundation
Reference Standards	ASCE7-10 EN1991 AS/NZS1170 Other
Warranty	10 Years



Project Information

PV MODULE INFORMATION		DESIGN CONDITION	
Size	2278*1134*35mm	Clearance	700mm
Module Power	550W	North-south Span	/
Module Inclination (in degree)	30 deg	East-west Span	2800mm
Module arrangement	1 rows, 20 columns	Capacity	11000W
Number of installations	20 pcs	Maximum wind speed	25m/s

Arrangement



Component List

Description	Material	Specification	QTY
Column	Q355B	3116mm	9 pcs
Beam	S420GD-ZM275	1430mm	9 pcs
Brace	S420GD-ZM275	1083mm	9 pcs
Purlin	S420GD-ZM275	5660mm	4 pcs
Purlin	S420GD-ZM275	3960mm	4 pcs
Purlin	S420GD-ZM275	3920mm	2 pcs
Purlin Connector	Q235B	L80*40*3*210mm	8 pcs
Support Beam Splice	Q235B	L75*50*5*50mm	18 pcs
Support Chip	Q235B	100*150*4mm	9 pcs
Steel Rod	Q235B	φ10*3100mm	4 pcs
Semicircular Gasket	AL Q235B304	50*20*3*25mm	8 pcs
Bolts to Module	SUS304 (A2-70)	M8*20	80 pcs
Bolts kits	Class 8.8	M10*30	100 pcs
Bolts kits	Class 8.8	M12*40	45 pcs