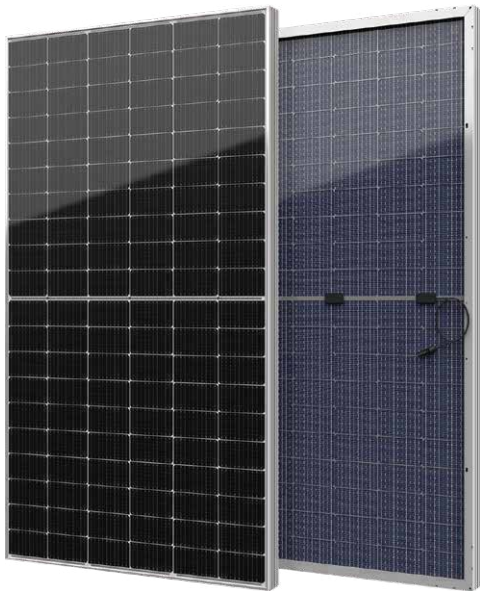


# YUKON Series

Half-Cell  
Transparent Backsheet Module

**445-460Wp** | **21.25%**  
Module Power Output | Max Efficiency



## Key Features



High module conversion efficiency



Better temperature coefficient



Super multi busbar technology



Low attenuation long warranty



Superior load capacity



Higher bifacially

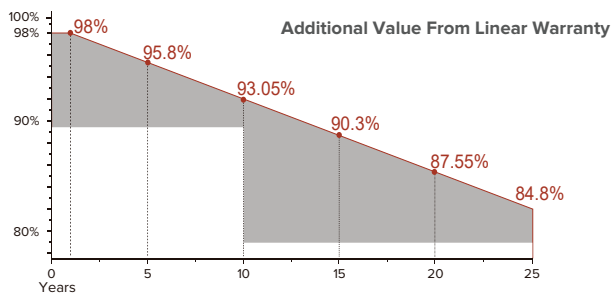


USA based liability insurance



Houston, Texas based company

## Warranty



**15** <Years> Guarantee on product material and workmanship

**25** <Years> Linear power output warranty

## Product Certification

IEC61215:2016; IEC 61730:2016; UL61730

IEC62804 PID

IEC61701 Salt Mist

IEC62716 Ammonia Resistance

IEC60068 Dust and Sand

IEC61215 Hailstone

Fire Type (UL61730):Type1

ISO14001:2015; ISO9001:2015; ISO45001:2018



## About SEG Solar

SEG Solar is a leading manufacturer of high-performance solar panels for residential, commercial, and utility applications. The company, headquartered in Houston, Texas, is committed to providing cost-effective and reliable solar solutions that help customers reduce their energy costs and carbon footprint.



Download Datasheet

## Electrical Characteristics

Module Type	SEG-445-BMB-TB			SEG-450-BMB-TB			SEG-455-BMB-TB			SEG-460-BMB-TB		
	Front STC	Front NOCT	Back STC	Front STC	Front NOCT	Back STC	Front STC	Front NOCT	Back STC	Front STC	Front NOCT	Back STC
Maximum Power -Pmp(Wp)*	445	333	312	450	337	315	455	341	319	460	345	322
Open Circuit Voltage -Voc(V)	41.22	38.41	41.20	41.32	38.57	41.30	41.42	38.67	41.40	41.52	38.77	41.50
Short Circuit Current -Isc(A)	13.66	11.04	9.63	13.76	11.12	9.70	13.86	11.20	9.77	13.96	11.28	9.84
Maximum Power Voltage -Vmp(V)	34.18	31.82	34.22	34.28	31.98	34.29	34.39	32.06	34.42	34.49	32.18	34.49
Maximum Power Current -Imp(A)	13.03	10.48	9.12	13.13	10.56	9.19	13.24	10.64	9.27	13.34	10.73	9.34
Module Efficiency(%)	20.56			20.79			21.02			21.25		
Power Tolerance(W)	(0, +4.99)											
Maximum System Voltage	1500V DC											
Maximum Series Fuse Rating	30 A											
Bifaciality	70%±10%											

STC: Irradiance 1000 W/m<sup>2</sup> module temperature 25°C AM=1.5

NOCT: Irradiance 800W/m<sup>2</sup> ambient temperature 20°C module temperature 45°C wind speed: 1m/s

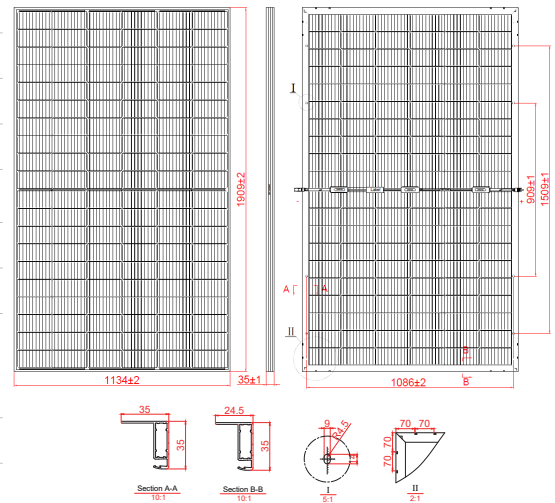
\*Measuring tolerance: ±3%

## Mechanical Specifications

External Dimension	1909 x 1134 x 35 mm
Weight	22.3 kg
Solar Cells	PERC Mono 182 x 91mm(120 pcs)
Front Glass	3.2 mm AR coating tempered glass
Frame	Anodized aluminium alloy
Junction Box	IP68 / 3 diodes
Connector Type	PV-CO02-xy / MC4
Cable Type	12 AWG PV Wire (UL)
Cable Length	Portrait: 400 mm(+) / 200 mm(-) Landscape: 1200 mm(+) / 1200 mm(-) or customized length
Mechanical Load(Front)	5400 Pa / 113 psf*
Mechanical Load(Rear)	2400 Pa / 50 psf*

\*Refer to SEG installation Manual for details

## Technical Drawing



\*Refer to SEG installation Manual for details

## Packing Configuration

Container	20'GP	40'HQ
Pieces per Pallet	31	31
Pallets per Container	5	24
Pieces per Container	155	744

## Temperature Characteristics

Pmax Temperature Coefficient	-0.35 %/°C
Voc Temperature Coefficient	-0.27 %/°C
Isc Temperature Coefficient	+0.05 %/°C
Operating Temperature	-40~+85 °C
Nominal Operating Cell Temperature (NOCT)	45±2 °C

## I-V Curve

