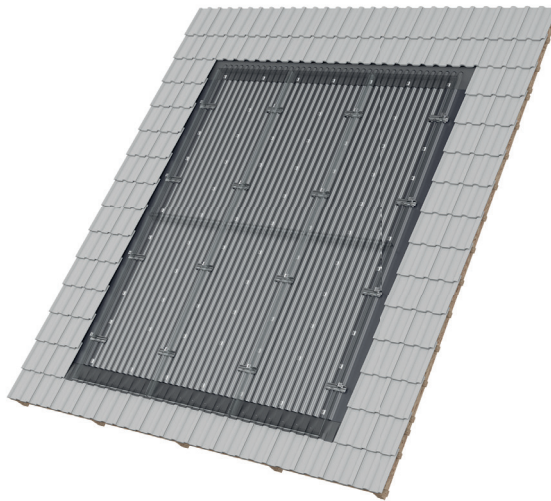




mounting  
systems



## Infix ProLine

<b>Application</b>	In-roof
<b>Roof cladding</b>	Suitable for most types of roof cladding
<b>PV-modules</b>	Framed and frameless modules
<b>Roof inclination</b>	10° to 45° (other slopes on request)
<b>Total height of PV system</b>	Portrait: 40 mm + module height Landscape: 30 mm + module height
<b>Module arrangement</b>	Coherent surfaces, also covering of the entire roof surface and integration of dormer window possible (after prior examination)
<b>Module orientation</b>	Portrait and Landscape
<b>Roof structure</b>	Battens as for conventional tile covering
<b>Certificate</b>	MPA Dresden: Fire behaviour tests in accordance with DIN EN 13501-5:2010-02
<b>Supporting profiles</b>	Extruded Aluminium (EN AW 6063 T66)
<b>Small parts</b>	Stainless steel (V2A)
<b>Flashing (lateral and top)</b>	Aluminium (EN AW 3005)
<b>Corrugated metal</b>	Aluminium (EN AW 3005)
<b>Seals</b>	EPDM
<b>Colour</b>	Plate finish Cover plates in black on demand
<b>Warranty</b>	10 Years



In-roof



Framed modules



Frameless modules



Portrait orientation



Landscape orientation



Double roman tiles



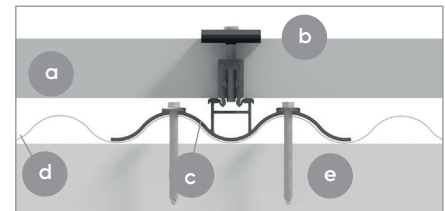
Slate



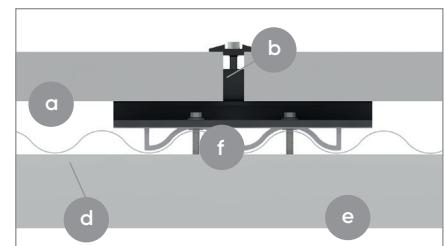
Plain tiles



Bitumen shingles



Horizontal section, landscape installation



Horizontal section, portrait installation

- a PV module
- b Module clamp
- c Adapter for landscape installation
- d Corrugated sheet
- e Roof batten
- f Adapter for portrait installation



For further information: [www.mounting-systems.com](http://www.mounting-systems.com)  
Subject to technical changes.  
2023 © Mounting Systems GmbH