

D160 BIFACIAL

Fixing in the single skin metal roof



ETN



Single skin metal roofs



Landscape Orientation

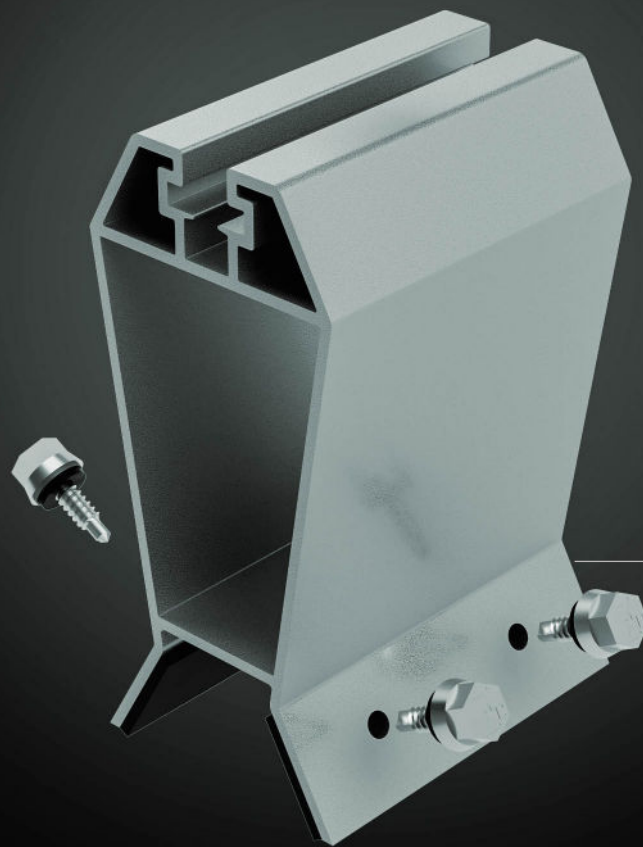


Reflection

Central clamp + earthing



Wing nut



D160 BIFACIAL plate

THE ADVANTAGES OF THE D160 BIFACIAL SYSTEM.

- Patented system.
- Optimizes production on the underside of bifacial modules.
- 160 mm hyper-ventilated air gap for all types of modules, leading to improved performance.
- Fixing to the sides of the crown ensures stronger pull resistance

