



---

## Pad Mounted Transformer Brochure

ANSI & NEMA Standard

-YS Series

**FARADY ELECTRIC CO.,LTD**

## General

Farady Three Phase compartmental type pad-mounted transformers are utilized in underground distribution systems. They are particularly suitable for high-rise buildings, apartment complexes, shopping malls, hospitals, schools, commercial structures, and industrial facilities.

The standard rating for these transformers ranges from 10 to 167 KVA for single phase, and 45 to 3000 KVA for three phase, with primary voltage ratings ranging from 2,400V to 34,500V. The design of these transformers adheres to the relevant standards set by ANSI/IEEE and NEMA.

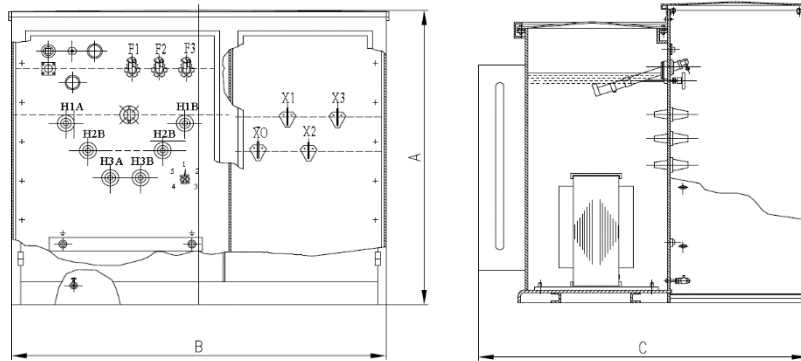


## Product View and Features

- ANSI/IEEE C57.12.34
- Single or Three phase
- **DOE2016 or NEMA TP1 Efficiency**
- Indoor or outdoor
- Wound core-coil construction
- Robust steel tank and cabinet assembly
- Dead or live front
- 3 points door locking
- Standard NEMA accessories
- All standard tap configurations
- Dual voltage available
- Corrosion tank protection

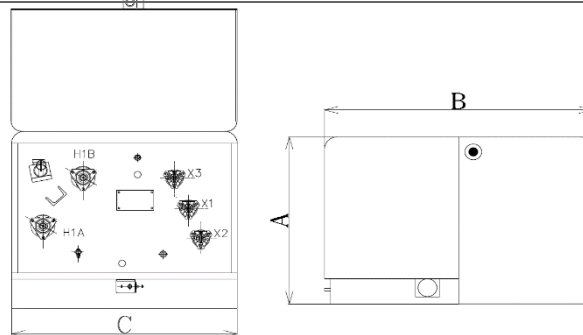


## Typical Product Outline



**Table of Liquid Three phase pad mounted transformer (<150kV BIL) Temp rise 65°C 5°C**

kVA	A mm	B mm	C mm	Weight (kG)	Efficiency %	
					DOE 2016	NEMA TP1
45	1300	1750	1200	1150	98.92	<b>98.60</b>
75	1300	1750	1200	1200	99.03	<b>98.70</b>
112.5	1300	1750	1200	1250	99.11	<b>98.80</b>
150	1300	1750	1200	1300	99.16	<b>98.90</b>
225	1300	1750	1200	1600	99.23	<b>99.00</b>
300	1300	1750	1450	1900	99.27	<b>99.00</b>
500	1300	1850	1450	2600	99.35	<b>99.10</b>
750	1400	1850	1450	3300	99.40	<b>99.20</b>
1000	1400	1850	1450	4400	99.43	<b>99.20</b>
1500	1650	1850	1680	5500	99.48	<b>99.30</b>
2000	1650	2350	1750	6500	99.51	<b>99.40</b>
2500	1750	2350	1800	7900	99.53	<b>99.40</b>



**Table of Liquid Single phase pad mounted transformer (<150kV BIL) Temp rise 65°C 5°C**

kVA	A mm	B mm	C mm	Weight (kG)	Efficiency %	
					DOE 2016	NEMA TP1
10	610	750	850	280	98.70%	98.40%
15	610	750	850	300	98.82%	98.60%
25	610	750	850	330	98.95%	98.70%
37.5	610	750	850	350	99.05%	98.80%
50	610	750	850	370	99.11%	98.90%
75	610	750	950	400	99.19%	99.00%
100	750	950	1000	450	99.25%	99.00%
167	750	1200	1000	700	99.33%	99.10%

## Quality Assurance

Quality assurance is an integral part of the process. All electrical testing is per IEEE standards.. Quality of processed parts and subassemblies are the responsibility of the production personnel. Regular quality inspections and spot checking are conducted to make sure that good and consistent quality is achieved and maintained.

### **Routine Tests**

- In-process Core Loss Test
- Transformer Turns Ratio Test
- Winding Resistance Test
- Polarity and Phase Displacement Test
- Insulation Power Factor Test
- Liquid Insulation DBV Test
- No Load Loss & Excitation Test
- Impedance Voltage & Load Loss Test
- Voltage Ratio Test
- Applied Potential Test
- Induced Potential Test

### **Type Tests**

- Temperature Rise Test
- Basic Impulse Level (BIL)

## Accessories



Bushing insert



Bayonet fuse holder



Bushing well



NEMA bushing

Copyright 2023 Farady Electric

**Farady Electric Co.,Ltd**

TEL:0086-577-61722510/61777258

Fax:0086-577-61777257

[www.farady-electric.com](http://www.farady-electric.com)

Email: sale@farady.cn

Add:888# Wanli RD,Xiangyang Industry section, Yueqing city,  
Zhejiang,P.R.China, 325604