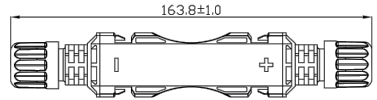
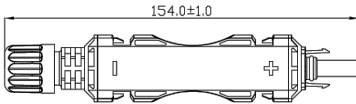
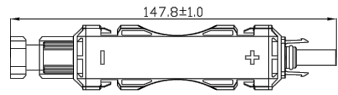
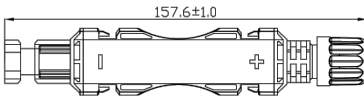


1500V DC Fuse Connector

保险丝连接器 1500V



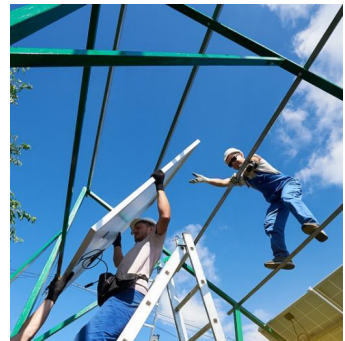
Product Specifications

产品规格

绝缘材料 / Insulation Material	PA66
额定电流 / Corresponding current	30A
额定电压 / Rated Voltage	1500V DC
额定脉冲电压/Rated impulse voltage	16kV
额定绝缘电压/Rated insulation voltage	8kV
接触电阻/contact resistance	≤0.5mΩ
接触材料 / Contact Material	铜, 镀锡 / Copper tin plating
防水等级 / Protection Degree	IP65/IP68 (1m,1h)
保险丝规格 / Fuse Specification	1A-20A
防护等级/Protection class	Class II
应用等级/Application class	Class A
防火等级 / Flame class	UL94-V0
使用温度 / Ambient Temperature	-40°C ~ +85°C
电缆规格 / Cable Specification	4mm ² (12AWG)-6mm ² (10AWG)

Replacable Fuse

保险丝可更换



SOLREACH