



TOPCon

615-635W

M10 / 182mm Cell - 156 Half-cells

KEY FEATURES



Outstanding Power Generation



Anti PID/ Low LID protection



Lower temperature coefficient



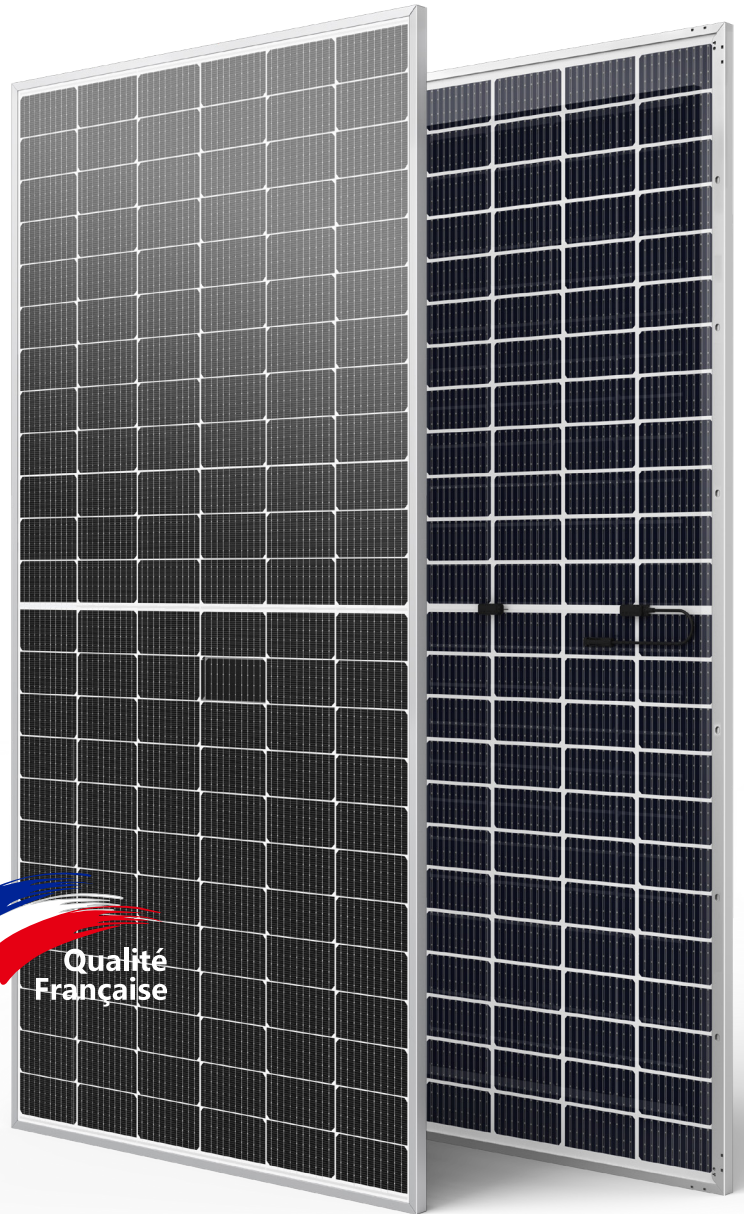
Less Hot Spot Shading effects



Enhanced Bifaciality Factor



Exceptional Mechanical Resistance



22.73%
Maximum Efficiency

0~+5W
Positive Power Tolerance

635W
Maximum Power Output

GRADE A
Cells Guaranteed

COMPREHENSIVE CERTIFICATES

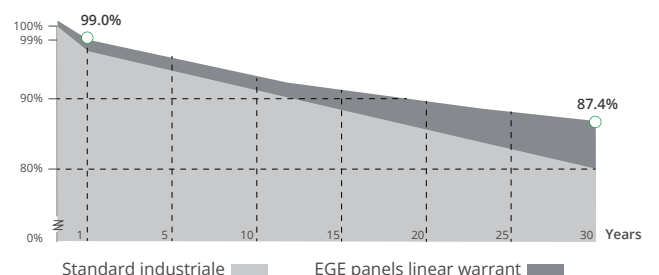
IEC 61215/ IEC 61730 / IEC 61701 / IEC 62716
ISO 9001 : Quality Management Systems



LINEAR PERFORMANCE WARRANTY

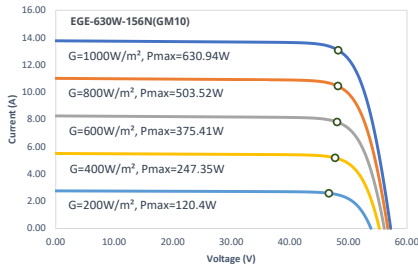
15 Year Product Warranty

30 Year Linear Power Warranty

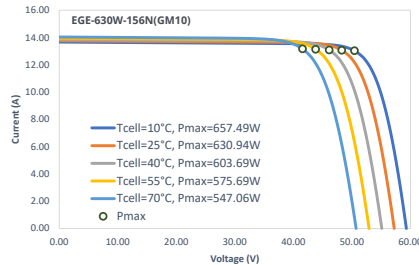


Characteristics

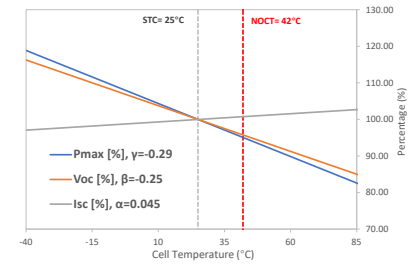
IV-Curves Irradiance



IV-Curves Temperature



Temperature Dependence of Isc, Voc, Pmax



Electrical Characteristics (STC: E=1000W/m² - Tcell=25°C - AM1.5 NOCT: E=800W/m² - T=20°C - v=1m/s BiFi30: 30% irradiance ratio)

Module Type	EGE-615W-156N(GM10)			EGE-620W-156N(GM10)			EGE-625W-156N(GM10)			EGE-630W-156N(GM10)			EGE-635W-156N(GM10)		
	STC	NOCT	BiFi30	STC	NOCT	BiFi30	STC	NOCT	BiFi30	STC	NOCT	BiFi30	STC	NOCT	BiFi30
Power output (Pmax)	615 W	463 W	762.6 W	620 W	467 W	768.8 W	625 W	471 W	775.0 W	630 W	475 W	781.2 W	635 W	479 W	787.4 W
Maximum power voltage (Vmp)	47.58 V	43.85 V	47.58 V	47.89 V	44.00 V	47.89 V	48.13 V	44.14 V	48.13 V	48.28 V	44.29 V	48.28 V	48.52 V	44.43 V	48.52 V
Maximum power current (Imp)	12.94 A	10.57 A	16.03 A	12.96 A	10.62 A	16.05 A	13.00 A	10.67 A	16.10 A	13.07 A	10.72 A	16.18 A	13.11 A	10.77 A	16.23 A
Open circuit voltage (Voc)	54.44 V	42.75 V	54.44 V	54.68 V	42.86 V	54.68 V	54.99 V	42.98 V	54.99 V	55.30 V	43.09 V	55.30 V	55.54 V	43.21 V	55.54 V
Short circuit current (Isc)	13.71 A	11.14 A	16.98 A	13.73 A	11.19 A	17.01 A	13.75 A	11.24 A	17.04 A	13.76 A	11.28 A	17.04 A	13.79 A	11.33 A	17.07 A
Bifaciality Factor	80% ± 10%														
Power tolerance	0~+5 W														
Module efficiency	22.01%			22.19%			22.37%			22.55%			22.73%		

Mechanical Characteristics

Cell type	Monocrystalline (182x91 mm)
Number of cells	156 (6x26)
Dimensions	2465x1134x35mm
Weight	35.8 kg
Glass	2.0mm (front) / 2.0mm (rear), tempered glass, AR coated
Frame	Anodized aluminium alloy
Junction box	IP68 rated (3 by pass diodes)
Cable	4.0 mm ² , 300 mm (+) / 300 mm (-): Length can be customized
Connector	MC4, MC4-EVO2 compatible

Operating Condition

Operating temperature range	-40°C~+85°C
Max system voltage (IEC)	1500 VDC
Max series fuse rating	30 A
Max front load (e.g.: snow)	5400 Pa
Max back load (e.g.: wind)	2400 Pa

Packaging (Dimensions of pallet: 2500*1125*1259mm)

Type	Quantity	Weight
Per Pallet	31 pcs	1143.8 kg
40ft HQ Container	558 pcs	20.59 t

Engineering Drawings

