



ATLAS

535-555W

M10 / 182mm Cell - 144 Half-cells

KEY FEATURES

- Outstanding Power Generation
- Anti PID/ Low LID protection
- Lower temperature coefficient
- Less Hot Spot Shading effects

Qualité Française



21.48%
Maximum Efficiency

0~+5W
Positive Power Tolerance

555W
Maximum Power Output

GRADE A
Cells Guaranteed

COMPREHENSIVE CERTIFICATES

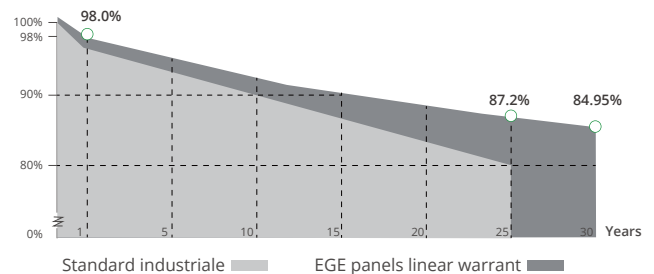
IEC 61215 / 61730 / 62716 / 61701 / 60068-2-68
ISO 9001 / 14001 / 45001



LINEAR PERFORMANCE WARRANTY

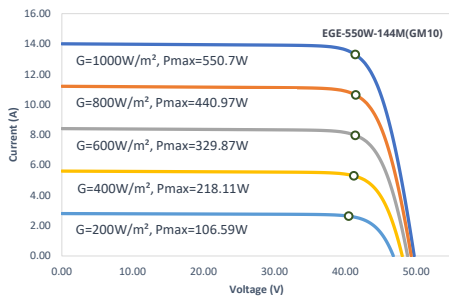
12 Year Product Warranty

30 Year Linear Power Warranty

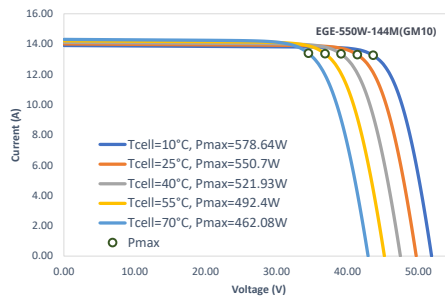


Characteristics

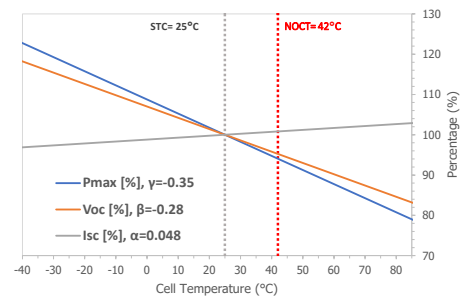
IV-Curves Irradiance



IV-Curves Temperature



Temperature Dependence of Isc, Voc, Pmax



Electrical Characteristics (STC: E=1000W/m² - Tcell=25°C - AM1.5 NOCT: E=800W/m² - T=20°C - v=1m/s BiFi30: 30% irradiance ratio)

Module Type	EGE-535W-144M(GM10)			EGE-540W-144M(GM10)			EGE-545W-144M(GM10)			EGE-550W-144M(GM10)			EGE-555W-144M(GM10)		
	STC	NOCT	BiFi30	STC	NOCT	BiFi30	STC	NOCT	BiFi30	STC	NOCT	BiFi30	STC	NOCT	BiFi30
Power output (Pmax)	535 W	403.90 W	647.35 W	540 W	407.60 W	653.40 W	545 W	411.30 W	659.45 W	550 W	415.00 W	665.50 W	555 W	418.80 W	671.55 W
Maximum power voltage (Vmp)	41.80 V	38.80 V	41.80 V	41.96 V	38.90 V	41.96 V	42.12 V	39.10 V	42.12 V	42.28 V	39.20 V	42.28 V	42.44 V	39.40 V	42.44 V
Maximum power current (Imp)	12.80 A	10.41 A	15.49 A	12.87 A	10.47 A	15.57 A	12.94 A	10.53 A	15.66 A	13.01 A	10.58 A	15.74 A	13.08 A	10.63 A	15.82 A
Open circuit voltage (Voc)	49.89 V	46.90 V	49.89 V	50.04 V	47.10 V	50.04 V	50.18 V	47.20 V	50.18 V	50.32 V	47.30 V	50.32 V	50.46 V	47.50 V	50.46 V
Short circuit current (Isc)	13.69 A	11.04 A	16.56 A	13.76 A	11.10 A	16.65 A	13.83 A	11.15 A	16.73 A	13.88 A	11.19 A	16.79 A	13.95 A	11.25 A	16.88 A
Bifaciality Factor	80% ± 10%														
Power tolerance	0~+5 W														
Module efficiency	20.70 %			20.89 %			21.09 %			21.28 %			21.48 %		

Mechanical Characteristics

Cell type	Monocrystalline (182x91 mm)
Number of cells	144 (6x24)
Dimensions	2279x1134x30mm
Weight	33 kg
Glass	2.0mm (front) / 2.0mm (rear), tempered glass, AR coated
Frame	Anodized aluminium alloy
Junction box	IP68 rated (3 by pass diodes)
Cable	4.0 mm², 300 mm (+)/ 300 mm (-): Length can be customized
Connector	MC4, MC4-EVO2 compatible

Operating Condition

Operating temperature range	-40°C~+85°C
Max system voltage (IEC)	1500 VDC
Max series fuse rating	30 A
Max front load (e.g.: snow)	5400 Pa
Max back load (e.g.: wind)	2400 Pa

Packaging (Dimensions of pallet: 2308*1125*1259mm)

Type	Quantity	Weight
Per Pallet	36 pcs	1222 kg
40ft HQ Container	720 pcs	24.44 t

Engineering Drawings

