

TripodRack

ROOF SOLAR PV MOUNTING SYSTEM MATRIX II

Overview

Roof Solar PV Mounting System Matrix II is derived from RM I to meet different roof projects demands. Solar modules can be arranged with single or double rows of landscape or portrait orientation. Quick installation and stable structure are assured by the modular Patented design.



Applied to Flat Roof



Tilt Angle



Suitable for framed
Solar Modules

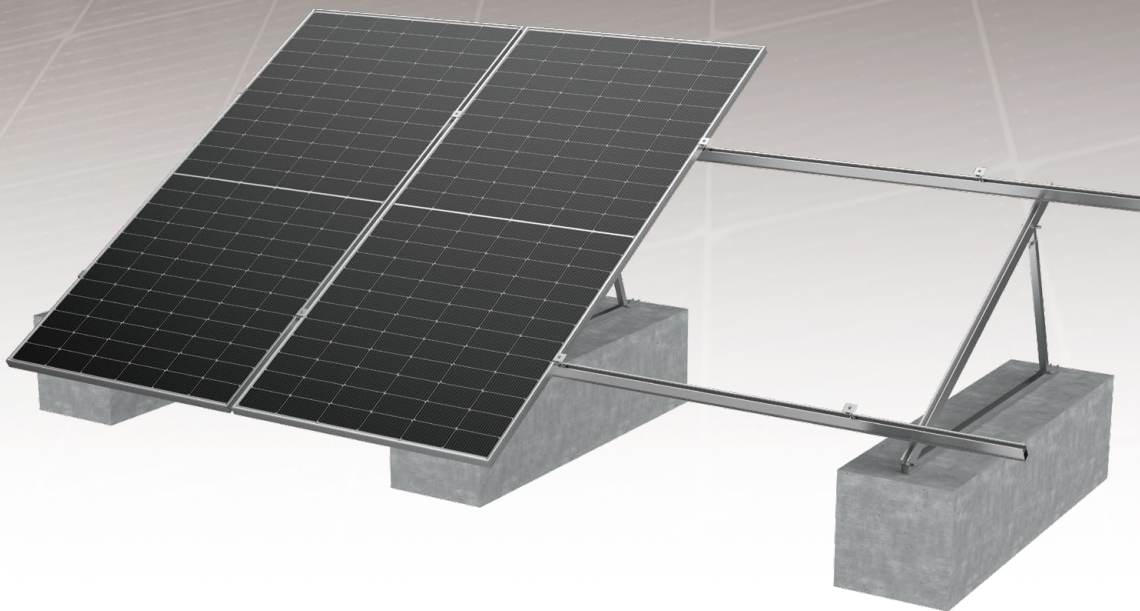


Panel Layout
Landscape or Portrait

10

YEARS

Warranty



Advantages

System Compatibility

Components mostly pre-assembled in factory to assure quick and reliable installation on site. Suitable for different flat rooftop, and compatible to different types of solar modules.

Adjustability

Tilt angle can be adjustable

Unique Mudsill Design

The mudsill can be fixed to flat roof or pitched roof with concrete foundation or steel foundation.

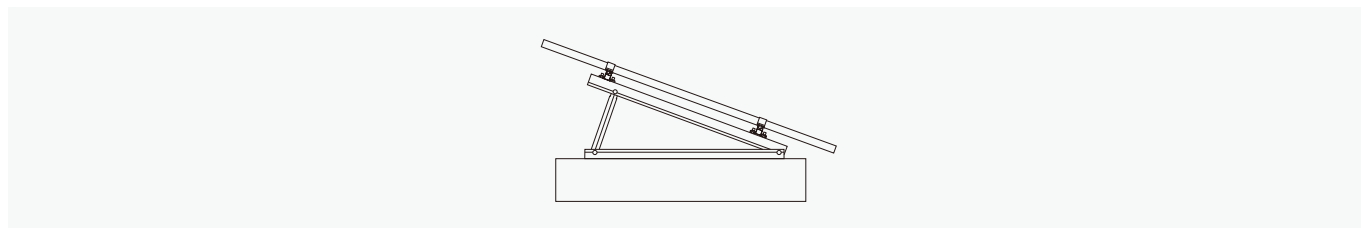
Solar Module Layout Flexibility

Both landscape and portrait solar module layout are suitable. Both single row and double rows layout can be achieved separately or combined.

Technical Parameters

System Name	Tripod Rack Matrix II Mounting System	Design Standard	Euro Code/EN1991/1993/1994, BS 6399, ASCE 7-10
Installation Site	Flat Roof, Pitched Roof		International Building Code IBC 2009, California Building Code CBC 2010
Roof Type	Concrete Roof, Metal Roof	Hook Material	AL6005-T5(Anodized)
Tilt Angle	0-60°		Fastener
Wind Load	≤60m/s	Small Components	AL6005-T5(Anodized)
Snow Load	≤1.6KN/m ²		Color
Applicable Solar Module	Framed or Frameless	Warranty	10-Year Warranty
Panel Layout	Portrait or Landscape		

Structure



Component Details



Pro Rail 50

Specification :
3100/4100/5100mm
Material :
AL6005-T5(Anodized)



Splice for Pro Rail 50

Specification :
Standard length 260mm
Flange Head Self-taping
Screw ST6.3*19
Material :
AL6005-T5(Anodized)



End Clamp Kit

Components :
End Clamp
Cross Module
Spring Washer M8
Hex Socket Head Bolt



Inter Clamp Kit

Components :
End Clamp
Cross Module
Spring Washer M8
Hex Socket Head Bolt



C Clamp Kit

Components :
C Clamp
Cross Module
Spring Washer M8
Hex Socket Head Bolt



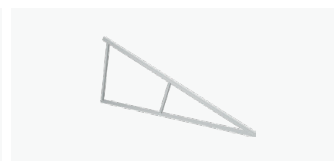
Angle Aluminum Tripod Support

Components :
Angle Aluminum Beam
Angle Aluminum Mudsill
Angle Aluminum Side Beam
flat washerM8
spring washerM8
Hexagon Bolt M8*2.5



Single Tripod Support

Components :
Tripod Support Beam
Tripod Support Mudsill
Tripod Support SquareTubeA
HJointer
Flat Washer M10
Spring Washer M10
Hexagon Bolt M10*65



Double Tripod Support

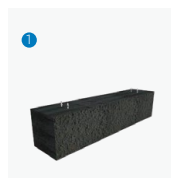
Components :
Tripod Support Beam
Tripod Support Mudsill
Tripod Support Square Tube A/B
H Jointer
Flat Washer M10
Spring Washer M10
Hexagon Bolt M10*65



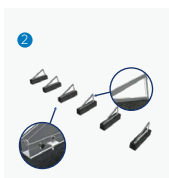
Adjustable Tripod

Components :
Tripod Support Beam
Tripod Support Mudsill
Tripod Support Square Tube A
H Jointer
Flat Washer M10
Hexagon Bolt M10*65

Installation Guide



Place the concrete base at the position indicated on the solution drawings



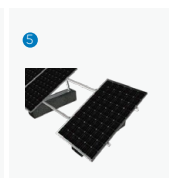
Fasten the preassembled supports on the expansion bolts by C Clamps



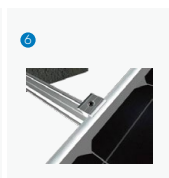
Install splices



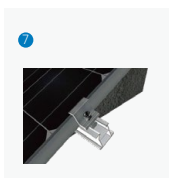
Fasten the rails by C Clamp Kits



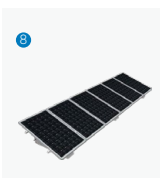
Install modules on the rails



Fasten modules by Inner Clamp Kits



Fasten modules by End Clamp Kits



Complete installation