

## SunRoof Metal

# L FEET AND HANGER BOLT KIT METAL ROOF PV MOUNTING SYSTEM



### Overview

L feet Kit and Hanger Bolt Kit is applied in most Corrugated Metal Roof commercial and industrial solar projects. The system can achieve stable and strong connection between the roof support structure and solar modules with modular Patented design. Pre-assembled kits save the installation time and cost on site.

### Component Details

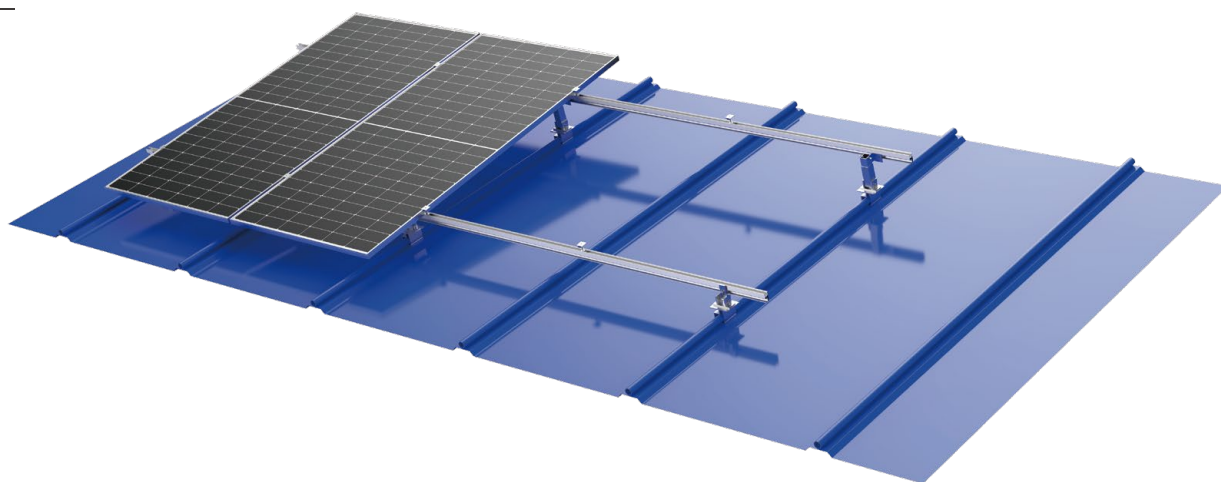


### Technical Parameters

System Name	L Feet Kit & Hanger Bolt Kit	Design Standard	Euro Code/EN1991/1993/1994, BS 6399, ASCE 7-10
Installation Site	Pitched Roof	Material	International Building Code IBC 2009, California Building Code CBC 2010
Foundation	Trapezoidal Roof	Fastener	AL6005-T5(Anodized)
Tilt Angle	0°	Small Components	SUS304 & Zinc-Nickel Alloy Electroplated Steel
Wind Load	≤60m/s	Color	AL6005-T5(Anodized)
Snow Load	≤1.6KN/m <sup>2</sup>	Warranty	Silver or Customized
Applicable Solar Module	Framed or Frameless		10-Year Warranty
Panel Layout	Portrait or Landscape		

## SunRoof Metal

# ADJUSTABLE SUPPORT KIT SOLAR PV MOUNTING SYSTEM



## Overview

Adjustable Support Kit Solar PV Mounting System is applied in most Corrugated Metal Roof and Flat Roof commercial and industrial solar projects. The system can achieve stable and strong connection between the roof support structure and solar modules with modular Patented design. Adjustable angles can reduce the stock SKU and flexible for onsite installation. Pre-assembled kits save the installation time and cost onsite.

## Component Details



Front Support

Adjustable Back  
SupportEnd Clamp Kit  
(MA)Inter Clamp Kit  
(MA)

Splice for MA Rail

MA Rail



## Technical Parameters

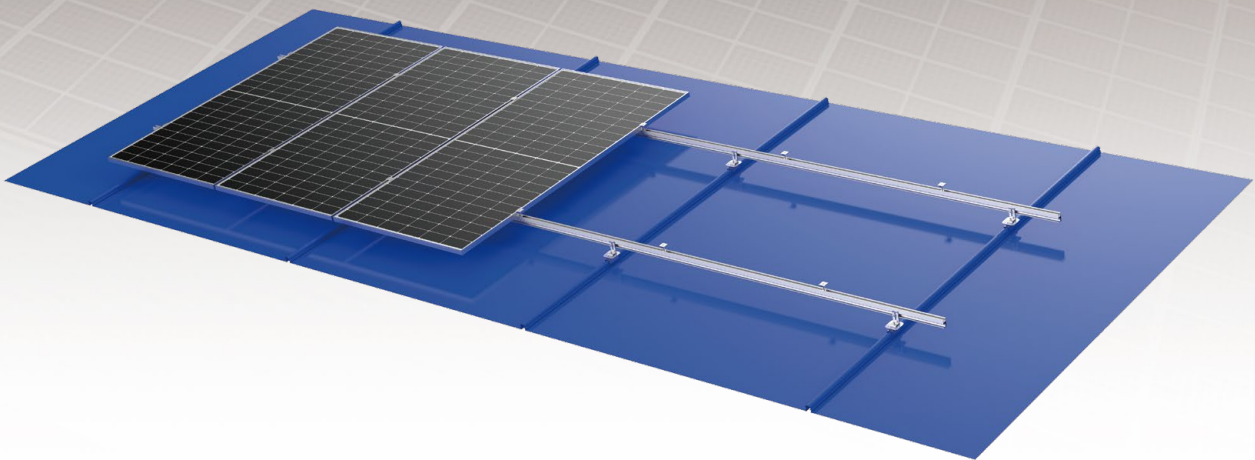
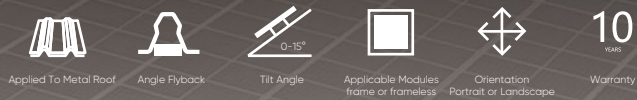
System Name	Adjustable Support	Design Standard	Euro Code/EN1991/1993/1994, BS 6399, ASCE 7-10
Installation Site	Pitched Roof		International Building Code IBC 2009, California Building Code CBC 2010
Foundation	Metal Roof	Material	AL6005-T5(Anodized)
Tilt Angle	10-60°	Fastener	SUS304 & Zinc-Nickel Alloy Electroplated Steel
Wind Load	≤60m/s	Small Components	AL6005-T5(Anodized)
Snow Load	≤1.6KN/m <sup>2</sup>	Color	Silver or Customized
Applicable Solar Module	Framed or Frameless	Warranty	10-Year Warranty
Panel Layout	Landscape or Portrait		

## SunRoof Metal

# KLIPOK METAL ROOF MOUNTING SYSTEM

### Overview

Kliplok is mainly applied to metal roofs, and its material is Al6005-T5. With its professional design, it can realize the perfect connection between roof support and roof to meet customer installation requirement. Professional solution and structure design can save your installation time and cost. Moreover, patented and unique design can bring you a good installation experience.



### Advantages

#### Applicable for Different Tile Roofs

According to customer requirement, choose different roof mounting system flexibly.

#### Save Installation Time and Cost

Save the installation time and cost by offering installation manual and solution.

#### Compatible to Different Types of Solar Modules

Free and flexible to choose different types of solar modules.

## Technical Parameters

System Name	Kliplik	Design Standard	Euro Code/EN1991/1993/1994, BS 6399, ASCE 7-10
Installation Site	Pitched Roof		International Building Code IBC 2009, California Building Code CBC 2010
Foundation	Trapezoidal Metal Roof Support	Hook Material	AL6005-T5(Anodized)
Tilt Angle	0-15°	Fastener	SUS304 & Zinc-Nickel Alloy Electroplated Steel
Wind Load	≤60m/s	Small Components	AL6005-T5(Anodized)
Snow Load	≤1.6KN/m <sup>2</sup>	Color	Silver or Customized
Applicable Solar Module	Framed or Frameless	Warranty	10 Years
Panel Layout	Portrait or Landscape		

## Components



L Feet Kit

Multi-functional  
Kliplik 406/700

End Clamp Kit  
(MA)

Inter Clamp Kit  
(MA)

Splice for MA Rail

MA Rail

MA Rail H60

## Optional Hook Type

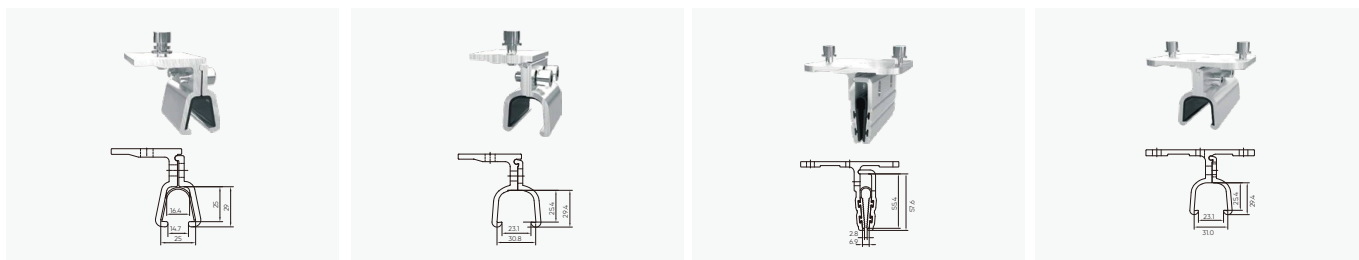


Multi-functional Kliplik 23

Kliplik 406&700 Compatible

Multi-functional Kliplik 406

Medium Kliplik 23

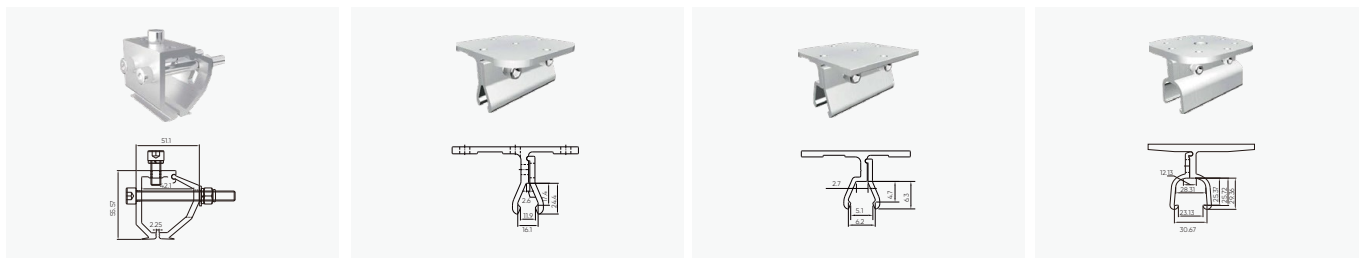


Kliplik 25B

Kliplik 700

Kliplik longline 305

Kliplik Interface Kit



Universal Kliplik Roof Clamp

Multi-functional Kliplik V

Multi-functional Kliplik VI

Multi-functional Kliplik 406/700

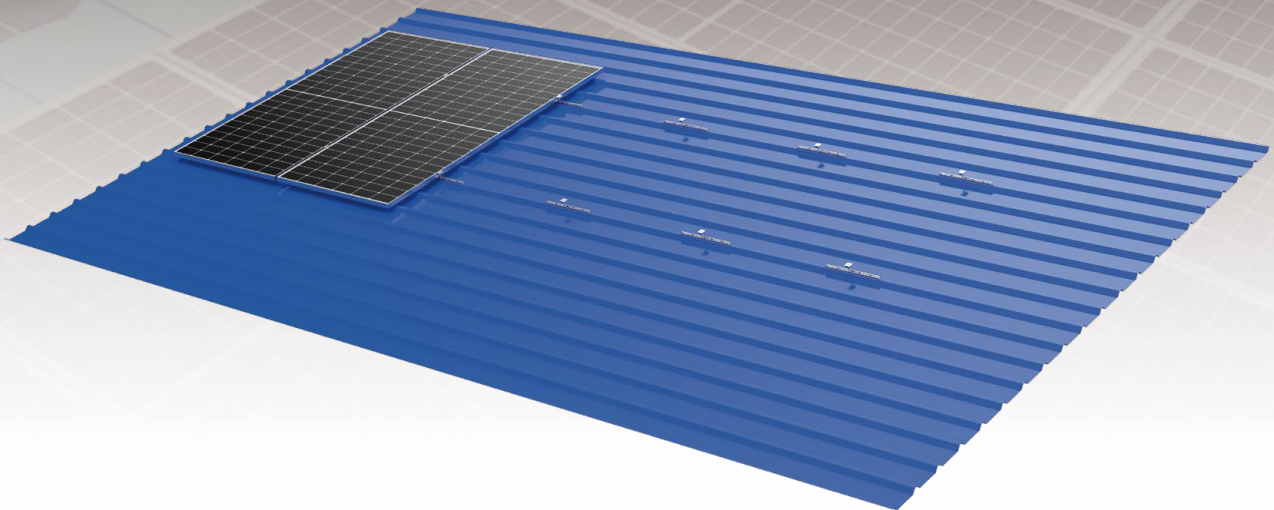
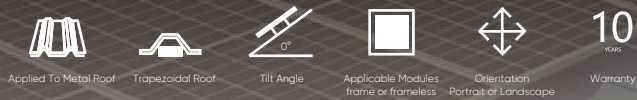


# SunRoof Metal

# MINI-RAIL KIT METAL ROOF PV MOUNTING SYSTEM

## Overview

Mini-Rail Kit is mainly applied to Trapezoidal Metal Roof commercial and industrial solar projects. The system can achieve stable and strong connection between the roof support structure and solar modules with modular Patented design. Pre-assembled kits save the installation time and cost onsite.



## Advantages

### Applicable for Different Metal Roofs

Design project by project, selecting configuration of mounting system components flexibly.

### Save Installation Time and Cost

Pre-assembled components and clear installation manuals are supplied to save the onsite installation time and cost, lead to better RoI.

### Compatible to Different Types of Solar Modules

Compatible to most kinds of framed 60-cell, 72-cell, half-cut cells modules and frameless modules.

## Technical Parameters

System Name	Mini-Rail Kit	Design Standard	Euro Code/EN1991/1993/1994, BS 6399, ASCE 7-10
Installation Site	Pitched Roof		International Building Code IBC 2009, California Building Code CBC 2010
Roof Type	Trapezoidal Roof	Material	Q235B(Hot-Dip Galvanized) & AL6005-T5(Anodized)
Tilt Angle	0°		Fastener
Wind Load	≤60m/s	Small Components	
Snow Load	≤1.6KN/m <sup>2</sup>		Color
Applicable Solar Module	Framed or Frameless	Warranty	
Panel Layout	Portrait or Landscape		

## Components



Mini-Rail Kit



End Clamp Kit



Inter Clamp Kit



End Clamp Kit(MA)



Inter Clamp Kit(MA)

## Optional Hook Type



Mini-Rail Kit



MA Mini Rail AH18.5



MA Mini Rail BH18.5



MA Mini Rail CH18.5



MA Mini Rail H25



MA Mini Rail AH30



MA Mini Rail BH30



MA Mini Rail CH30



T Rail H18.5



MA Mini Rail H45



T Rail H30



T Rail H50



# SunRoof Metal

# TRAPEZOIDAL METAL ROOF SOLAR PV MOUNTING SYSTEM

## Overview

Trapezoidal Metal Roof Clamp Solar PV Mounting System is mainly applied to metal roof, and its main material is aluminium alloy. With its professional design, it can realize the perfect connection between kliploks and roof to meet customer installation requirement. Professional solution and structure design can save your installation time and cost. Moreover, Patented and unique design can bring you a good and fast installation experience.



Applied To Metal Roof



Trapezoidal Roof



Tilt Angle



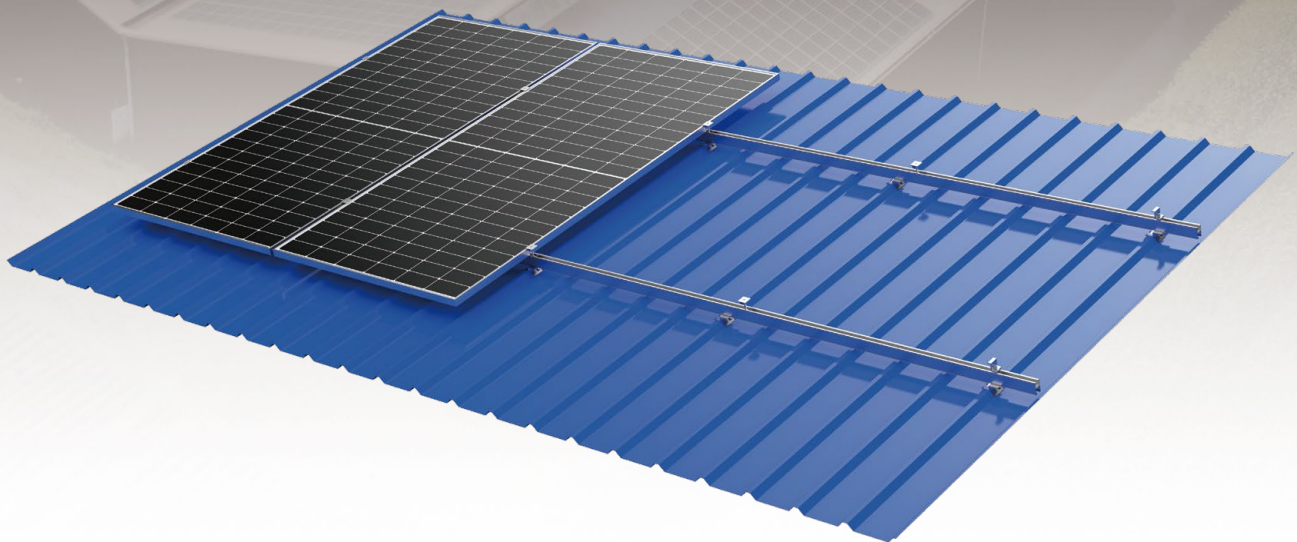
Suitable for framed or frameless Solar Modules



Panel Layout Landscape or Portrait



10 YEARS Warranty



## Advantages

### Applicable for different metal roofs

According to different metal roof types, making professionally design and achieve perfectly connection between the kliploks and roof tiles.

### Excellent structure design

Professional structure design will meet components installation requirements of tiled or with angle, as well as the installation in landscape and portrait orientation.

### Compatible to different types of solar modules

By its independent researched clamps, it is compatible to various solar modules in the market.

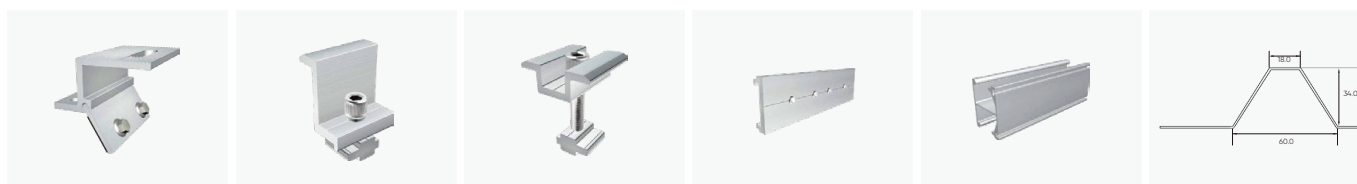
### Save installation time and cost

Patented structure design and system solutions will reduce on-site installation time and cost.

## Technical Parameters

System Name	Trapezoidal Metal	Design Standard	Euro Code/EN1991/1993/1994, BS 6399, ASCE 7-10
Installation Site	Pitched Roof		International Building Code IBC 2009,
Foundation	Trapezoidal Metal Roof Support		California Building Code CBC 2010
Tilt Angle	0-15°	Material	AL6005-T5(Anodized)
Wind Load	≤60m/s	Fastener	SUS304 & Zinc-Nickel Alloy Electroplated Steel
Snow Load	≤1.6KN/m²	Small Components	AL6005-T5(Anodized)
Applicable Solar Module	Framed or Frameless	Color	Silver or Customized
Panel Layout	Portrait or Landscape	Warranty	10-Year Warranty

## Components



Adjustable Trapezoidal Roof Support

End Clamp Kit

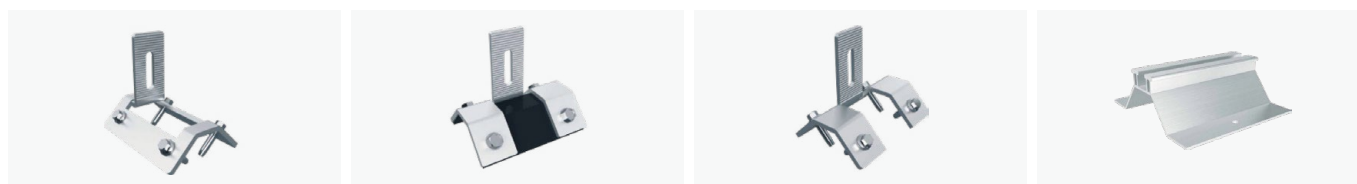
U20 Inter Clamp Kit

Splice for Light Symmetrical Rail

Light Symmetrical Rail

Tile's Structure

## Applicable Standing Seam Support



Trimdeck Roof Hook-07-A

Trimdeck Roof Hook

Trimdeck Roof Hook-07-B

Trimdeck Roof Clamp

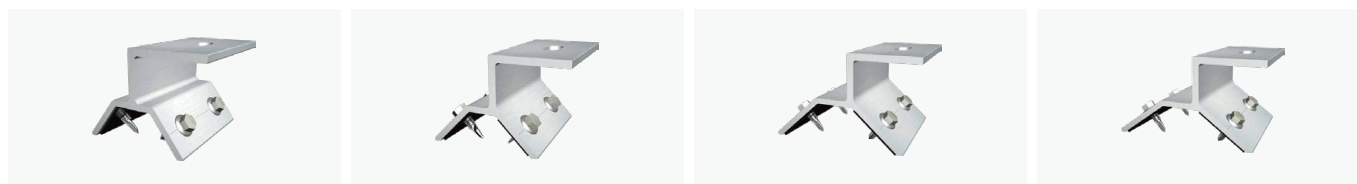


Trapezoidal Roof Support E

Trapezoidal Roof Support F

Trapezoidal Roof Support G

Trapezoidal Roof Support I

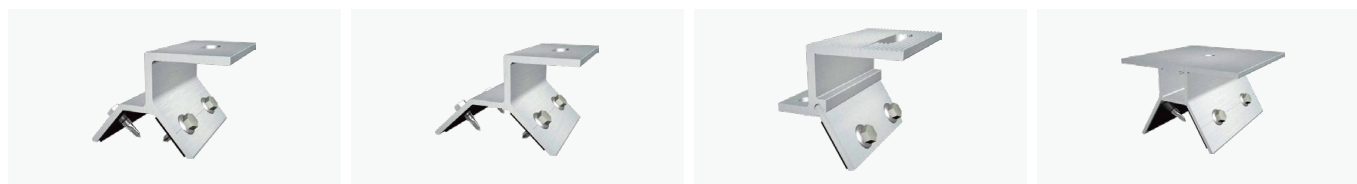


Trapezoidal Roof Support J

Trapezoidal Roof Support K

Trapezoidal Roof Support L

Trapezoidal Roof Support N



Trapezoidal Roof Support M

Trapezoidal Roof Support P

Adjustable Trapezoidal Roof Support

Trapezoidal Roof Support A