



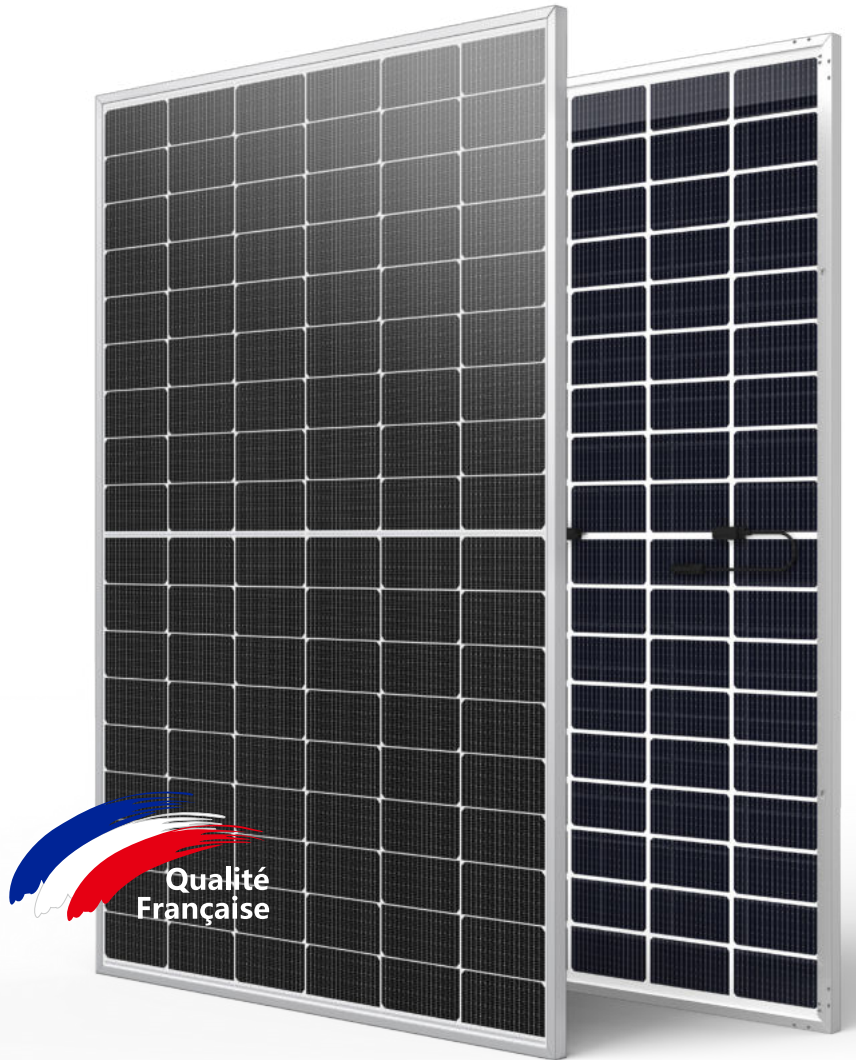
ATLAS

395-415W

M10 / 182mm Cell - 108 Half-cells

KEY FEATURES

- Outstanding Power Generation
- Anti PID/ Low LID protection
- Lower temperature coefficient
- Less Hot Spot Shading effects



Qualité Française

21.23%
Maximum Efficiency

0~+5W
Positive Power Tolerance

415W
Maximum Power Output

GRADE A
Cells Guaranteed

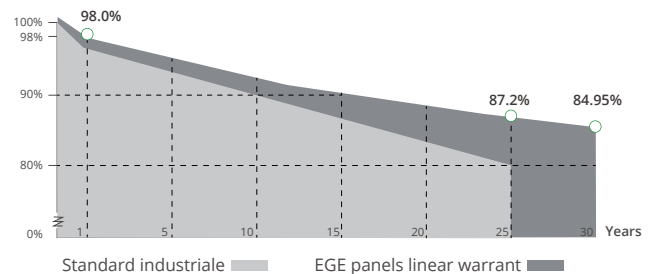
COMPREHENSIVE CERTIFICATES

IEC 61215 / 61730 / 62716 / 61701 / 60068-2-68
ISO 9001 / 14001 / 45001



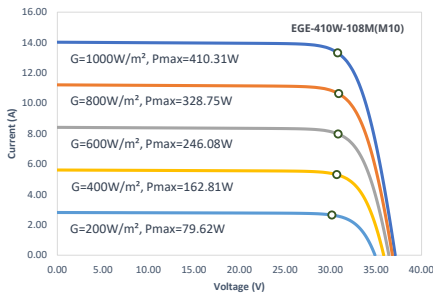
LINEAR PERFORMANCE WARRANTY

12 Year Product Warranty
30 Year Linear Power Warranty

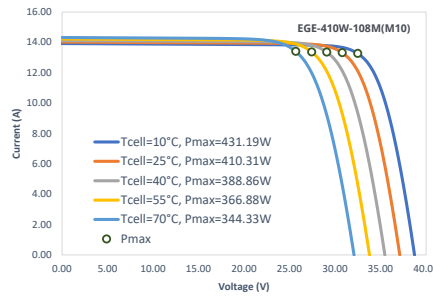


Characteristics

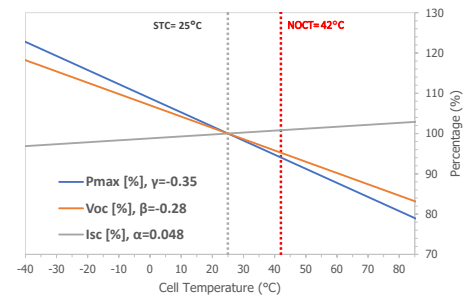
IV-Curves Irradiance



IV-Curves Temperature



Temperature Dependence of Isc, Voc, Pmax



Electrical Characteristics (STC: E=1000W/m² - Tcell=25°C - AM1.5 NOCT: E=800W/m² - T=20°C - v=1m/s BiFi30: 30% irradiance ratio)

Module Type	EGE-395W-108M(GM10)			EGE-400W-108M(GM10)			EGE-405W-108M(GM10)			EGE-410W-108M(GM10)			EGE-415W-108M(GM10)		
	STC	NOCT	BiFi30	STC	NOCT	BiFi30	STC	NOCT	BiFi30	STC	NOCT	BiFi30	STC	NOCT	BiFi30
Power output (Pmax)	395 W	298.30 W	477.95 W	400 W	302.00 W	484.00 W	405 W	305.80 W	490.05 W	410 W	309.50 W	496.10 W	415 W	313.30 W	502.15 W
Maximum power voltage (Vmp)	30.98 V	28.70 V	30.98 V	31.18 V	28.90 V	31.18 V	31.38 V	29.00 V	31.38 V	31.59 V	29.30 V	31.59 V	31.80 V	29.40 V	31.80 V
Maximum power current (Imp)	12.76 A	10.39 A	15.43 A	12.83 A	10.46 A	15.52 A	12.91 A	10.53 A	15.62 A	12.98 A	10.58 A	15.70 A	13.05 A	10.65 A	15.79 A
Open circuit voltage (Voc)	36.84 V	34.70 V	36.84 V	37.04 V	34.90 V	37.04 V	37.24 V	35.00 V	37.24 V	37.45 V	35.20 V	37.45 V	37.65 V	35.40 V	37.65 V
Short circuit current (Isc)	13.66 A	11.02 A	16.52 A	13.73 A	11.07 A	16.61 A	13.81 A	11.14 A	16.71 A	13.88 A	11.19 A	16.79 A	13.95 A	11.25 A	16.88 A
Bifaciality Factor	80% ± 10%														
Power tolerance	0~+5 W														
Module efficiency	20.20 %			20.46 %			20.72 %			20.97 %			21.23 %		

Mechanical Characteristics

Cell type	Monocrystalline (182x91 mm)
Number of cells	108 (6x18)
Dimensions	1722x1134x30mm
Weight	24.8 kg
Glass	2.0mm (front) / 2.0mm (rear), tempered glass, AR coated
Frame	Anodized aluminium alloy
Junction box	IP68 rated (3 by pass diodes)
Cable	4.0 mm², 300 mm (+) / 300 mm (-): Length can be customized
Connector	MC4, MC4-EVO2 compatible

Operating Condition

Operating temperature range	-40°C~+85°C
Max system voltage (IEC)	1500 VDC
Max series fuse rating	30 A
Max front load (e.g.: snow)	5400 Pa
Max back load (e.g.: wind)	2400 Pa

Packaging (Dimensions of pallet: 1755*1125*1259mm)

Type	Quantity	Weight
Per Pallet	36 pcs	926.8 kg
40ft HQ Container	936 pcs	24.10 t

Engineering Drawings

