

SunBalcony

BALCONY SOLAR MOUNTING SYSTEM

Overview

Balcony Solar Mounting System is a Solar Mounting System product installed on balcony railings, which can easily realize the construction of photovoltaic power plants on the balcony. The system is all bolted and fixed, eliminating the need for welding and drilling during installation.

The unique telescopic tube support leg design allows the angle of the panel to be adjusted at any time.



Tilt Angle



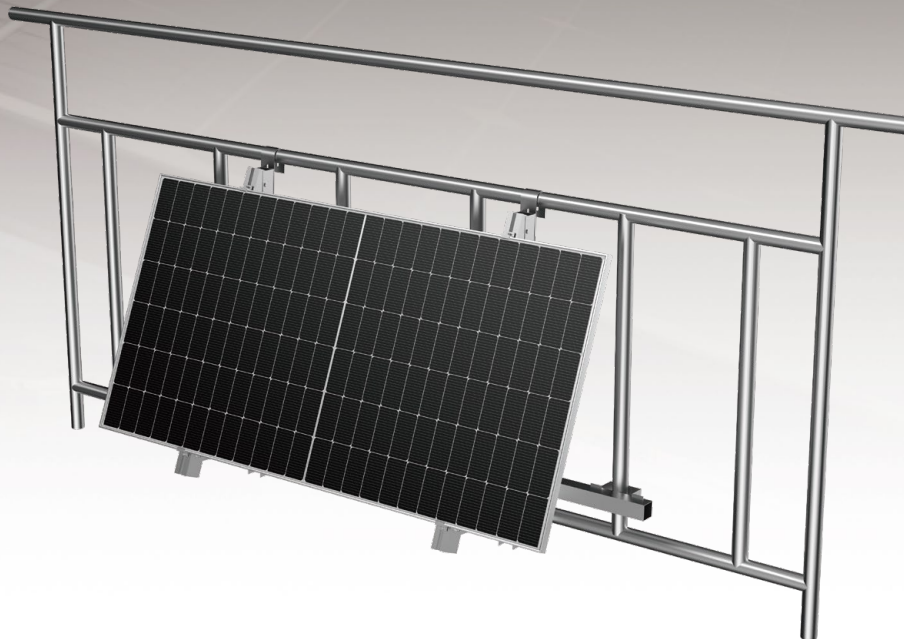
Suitable for framed Solar Modules



Panel Layout Landscape or Portrait

10
YEARS

Warranty



Advantages

Quick installation

Installation and removal are very simple and fast, 1-2 people can complete the installation.

No welding required

The system is all bolted and fixed, eliminating the need for welding and drilling during installation.

Adjustable angle

The tilt angle of the panels can be flexibly adjusted according to the installation site to obtain the best power generation efficiency, with a maximum tilt angle of 30°.

Stable and reliable

Optimized structural design and material selection ensure the strength and stability of the system, suitable for a variety of different climatic environments.

Technical Parameters

System Name	Balcony Solar Mounting System	Design Standard	Euro Code/EN1991/1993/1994, BS 6399, ASCE 7-10
Installation Site	Balcony		International Building Code IBC 2009, California Building Code CBC 2010
Foundation	Metal Railings Wall Concrete Roof		
Tilt Angle	10°-30°	Hook Material	Steel & AL6005-T5
Wind Load	≤30m/s	Fastener	SUS304
Snow Load	≤1.0KN/m ²	Small Components	AL6005-T5
Applicable Solar Module	Framed	Color	Natural Silver or Customized
Panel Layout	Horizontal	Warranty	10-Year Warranty

Structure



Installed on balcony with curved hook



Installed on wall with 3 expansion bolts



Installed on concrete roof with expansion bolts

Component Details



Curved Hook

Material :
Zn-Al-Mg Coating Steel



U-shaped Hoop

Material :
Zn-Al-Mg Coating Steel



Longitudinal Beam H50

Material :
Zn-Al-Mg Coating Steel



30*30 Square Tube

Material :
Zn-Al-Mg Coating Steel



U-shaped Base Beam H50

Material :
Zn-Al-Mg Coating Steel



Pro-U shaped Adjustment Tube

Material :
Zn-Al-Mg Coating Steel

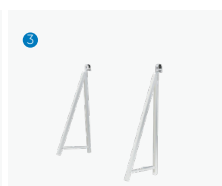
Installation Guide



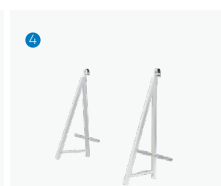
1 Install the tripod on the ground



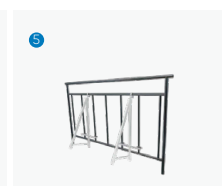
2 Adjust the preset Angle



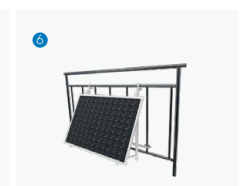
3 Lock the part of the Curved Hook



4 Find the 30*30 square tube also placed under the base beam of the tripod



5 Repeat the above steps to complete the installation of another set of tripod



6 Repeat the above steps to complete the installation of another set of tripod