



# SolarRoof Pro 2.0

Quick and Flexible Roof Mounting System





# SolarRoof Pro 2.0

The SolarRoof Pro 2.0 is a roof-mounting solution suitable for most residential pitched roofs. Using our innovative rail, M module, and interface family, the SolarRoof Pro 2.0 delivers a quick, safe, and cost-effective solution for installers.

## Main Benefits

### Wide adjustment range

The innovative adjustable tile hook offers a wide range of adjustments for three positions, different thicknesses of tiles, different wooden structures, or building structure tolerance. The wide adjustment range allows faster and easier onsite installation.

Only one tool is required to install the whole system, owing to the unification of the connection point design.

### Flexible orientation

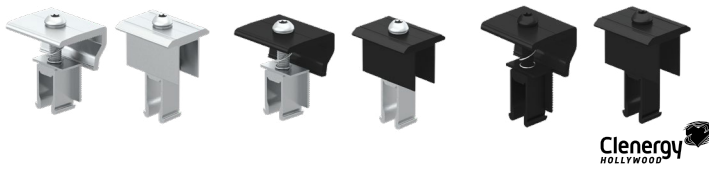
The same kit and components are required for landscape and portrait layouts on residential roofs by simply rotating the L feet on top of the roof hook. It avoids two layers of rail requirement and makes the PV-layout arrangement for irregular roofs more flexible.

### ETA-certified screws

The SolarRoof Pro 2.0 is a hassle-free solution. House owners can be worry-free with the stable and high-strength mounting system. High-strength hooks and rails, and ETA-certified screws ensure that house owners need not worry about tile fracturing or mounting system safety on windy or snowy days.

## Technical Details

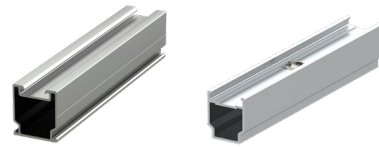
<b>Module Orientation</b>	Landscape or Portrait
<b>PV Module</b>	Framed
<b>Wind Load:</b>	Customised
<b>Snow Load:</b>	Customised
<b>Roof Type</b>	Tile Roof
<b>Tilt Angle</b>	0°, parallel to roof surface
<b>Material</b>	Main Structure: AL6005-T5 Roof Hook: AL6005-T5, SUS 304 and MAC Steel Fasteners: SUS 304
<b>Certification</b>	TUV, CE
<b>Warranty</b>	12 years



EC-M28-46/L50 & EC-M28-46/L50/BA & EC-M28-46/L50/XX  
IC-M28-46/L50 & IC-M28-46/L50/BA & IC-M28-46/L50/XX

**End and Inter Clamps 28-46mm, with M module**

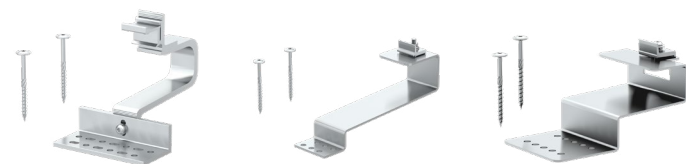
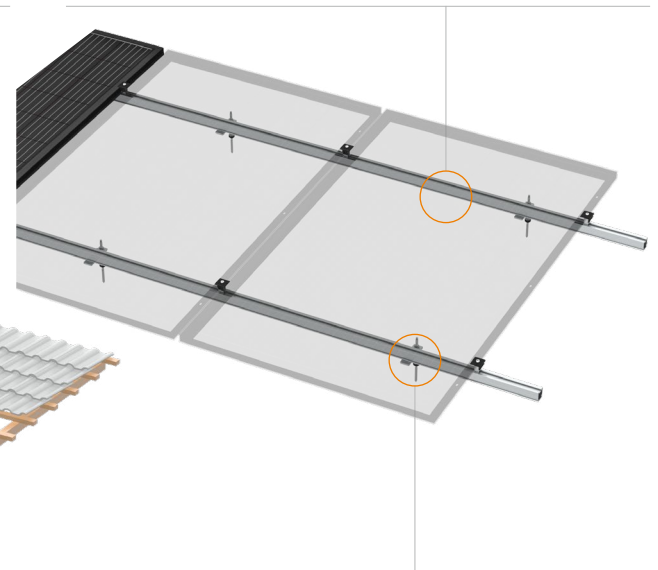
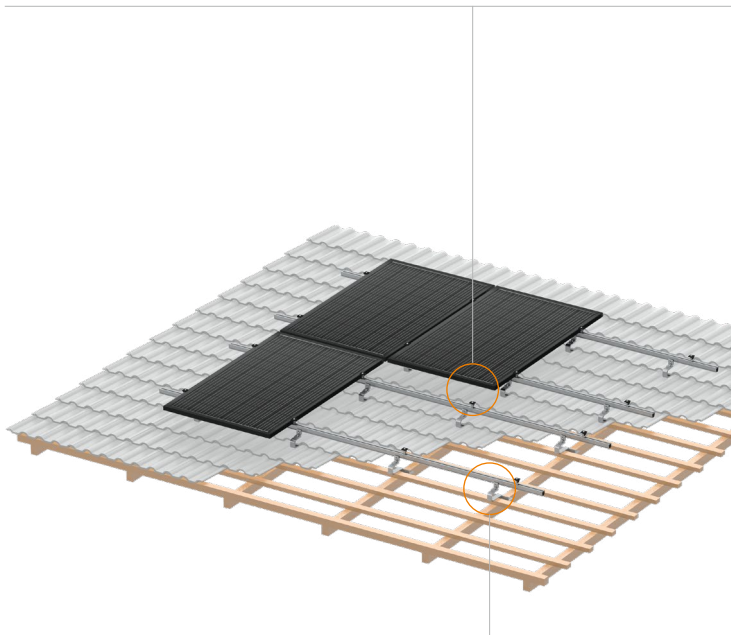
PVezRack® Clamp is applicable with most common framed PV modules from 28 mm to 46mm in height.



ER-R-SRPII/TO/40 & ER-SP-SRPII/TO/40

**Toroda Rail 40 & Splice**

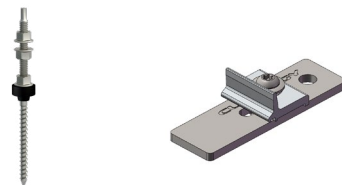
Specifically developed for rapid installation, the Toroda-Rail requires fewer fixings than traditional options. The system's screw-free splice allows a swift installation process.



ER-I-SRPII/TO/02A/BA

**Roof Hooks**

SolarRoof Pro 2.0 has high quality roof hooks which are suitable for most types of tiled roofs. High-strength hooks and rails, and ETA-certified screws ensure that house owners need not worry about tile fracturing or mounting.



ER-HB-8/XXXA & ER-HB-10/XXXA & ER-HB-12/XXXA  
ER-MP-HB/8/A & ER-MP-HB/10/A & ER-MP-HB/12/A

**Hanger Bolt & Mounting Kit**

A multiple-use solution with high flexibility. The solution is to fix the PV arrays on the purline of roof, with wooden purline hanger bolts, it's used on wooden purline buildings, with metal purline hanger bolts, it's used on metal purline buildings. It can be used in metal roofs, slate roofs, asphalt roofs etc.

<p>Grounding/earthing</p>	<p>Cable clips/4</p>	<p>Cable clips/2</p>	<p>Rail caps</p>




## **PV-ezRACK®**

### Clenergy

1001-1009 Min'an Rd,  
Huoju Hi-tech Ind. Dev. Zone  
Xiang'an District 361101, Xiamen,  
Fujian, China

Phone: +86 592 311 0088  
Email: [sales@clenergy.com](mailto:sales@clenergy.com)  
Web: [www.clenergy.com](http://www.clenergy.com)

 @ClenergyGlobal / @ClenergyClub / @ClenergyAUS / @ClenergyThailand

 @Clenergy\_global  @Clenergy  @Clenergy  @ClenergyClub

A Clenergy Technologies Company

