

浙江海钠光伏科技

Zhejiang Haina Solar Tech Co., Limited



浙江海钠光伏科技有限公司

Zhejiang Haina Solar Tech Co., Limited

Mob: +86-186 6836 8299

Tel: +86-0573-82272371

Fax: +86-0573-82210271

Email: tony@hainafastener.com

Web: www.hainasolar.com

Add: 嘉兴市南湖区携李路1888号嘉南广场1号楼405室

1-405 No.1888 Canaan Plaza Zuili Road, Nanhu District Jiaxing City Zhejiang Province 314050

SOLAR MOUNTING SYSTEM
SOLAR ACCESSORIES
SOLAR FASTENER

太阳能支架系统/五金配件



COMPANY PROFILE 公司简介

浙江海纳光伏科技有限公司是一家专业从事太阳能光伏系统设计、生产、销售及相关咨询服务的高科技企业。总部位于浙江嘉兴。

Zhejiang Haina Solar Tech Co., Ltd. is a high-tech enterprise specializing in the design, production, sales, and related consulting services of solar photovoltaic system. The headquarters is located in Jiaxing, Zhejiang.

作为一家太阳能光伏系统供应商，海纳自创建以来，致力于为商用、民用和公共设施的光伏系统提供专业、全面的一站式支架解决方案，其主要产品包括屋顶光伏支架系统、地面光伏支架系统、光伏支架配件等。

As a supplier of solar photovoltaic system, Haina has been committed to providing professional and comprehensive one-stop support solutions for solar systems in commercial, civil, and public facilities since its establishment. Its main products include rooftop solar mounting systems, ground solar mounting systems, solar mounting accessories, and more.

我们拥有专业的团队、完善的服务、合理的价格以及多年的出口经验。并且严格按照ISO9000质量管理体系把控，所生产的产品完全符合国际标准。产品畅销欧洲、美国、中东和东南亚等，深受国内外客户的欢迎。

We have a professional team, perfect service, reasonable price and many years of export experience. And strictly in accordance with the ISO9000 quality management system control, the production of products fully in line with international standards. Products sell well in Europe, the United States, the Middle East and Southeast Asia, and are welcomed by domestic and foreign customers.

励志成为好的光伏系统供应商、为客户创造价值是海纳的目标，在强有力的团队和创新型经营模式的保障下，积极进取、努力开拓。我们的诚信、实力和产品质量获得业界的认可。欢迎各界朋友莅临公司参观、指导和业务洽谈。

Motivating to become a good supplier of solar system and creating value for customers is the goal of Haina. With the support of a strong team and innovative business model, we actively strive to forge ahead and strive to expand. Our integrity, strength, and product quality have been recognized by the industry. Welcome friends from all walks of life to visit, guide, and negotiate business with the company.

Quality Certificate



JAXING HAINA FASTENER CO., LIMITED
Certified Material Test Report No. BS 521-10204-2004 3.1.

MANUFACTURER: JAXING HAINA FASTENER CO., LIMITED
PRODUCT: CARBON BOLTS
MANUFACTURED DATE: 2023-07 QUANTITY: 40PCS
ITEM: M12x1.75 MATERIAL: A2-70

| IDENTIFICATION | STANDARD | ACTUAL RESULT | REMARK |
|----------------------|-------------|-----------------------------|--------|
| APPEARANCE | OK | OK | OK |
| HEAT TREATMENT | 475±10 | 475 472 477 478 | OK |
| WEIGHT AVERAGE PLATE | 19.55-20.05 | 19.58 19.34 19.43 19.37 | OK |
| POLEMAN THICK LENGTH | 742.6-8 | 8 7.98 7.99 | OK |
| POLEMAN THICK | 8.42-0.2 | 8.48 8.48 8.48 8.78 | OK |
| LENGTH | 130 | 129.95 129.92 129.98 129.93 | OK |
| THREAD LENGTH | 50 | 49.97 49.98 49.98 49.97 | OK |

TEST RESULT: PASSED



FQC Inspection Certificate 检测报告

Customer: Jaxing Haina Fastener Co., Limited
Inspector: Jaxing Haina Fastener Co., Limited
Date of report: 2023-07-07
Inspector: Wang Xian



| Item | Requirement | Test result |
|-----------------------------|-------------|-------------|
| Chemical analysis M content | 7 | 7 |
| DOWNL SCREW S1226 WINDROD | 8.10.5% | 8.21% |
| DOWNL SCREW S1226 WINDROD | 8.10.5% | 8.21% |

Test Equipment



目录 CONTENTS



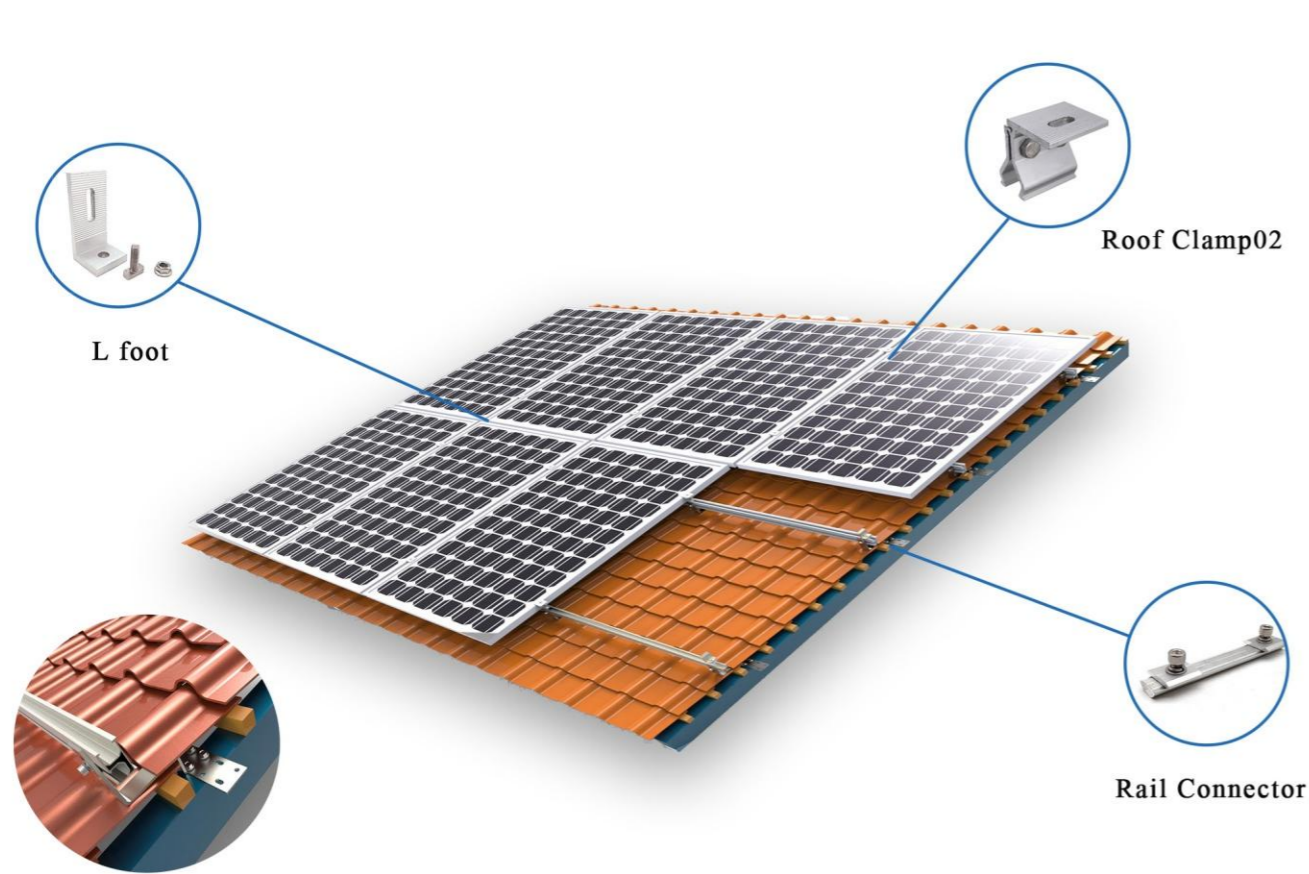
| | |
|---|-------|
|  Solar Mount System | |
| Solar Tile Roof Mounting System | 01 |
| Solar Flat Roof Mounting System | 02 |
| Solar Metal Roof Mounting System | 03 |
| Solar Balcony Mount | 04 |
| Solar Ground Mount | 05 |
| Solar Farm Mount | 06 |
| | |
|  Solar Accessories | |
| Aluminum Rail | 07 |
| Ground Screw | 08 |
| Steel Channel | 08 |
| Solar Hook | 09 |
| Solar Hanger Bolt | 10 |
| Bolt | 11 |
| Nut | 12 |
| Screw | 13 |
| Washer | 14 |
| Solar Clamp | 15 |
| Other Accessories | 16-18 |

瓦屋顶支架

Solar Tile Roof Mounting System



Solar tile roof mounting system has high strength and beautiful appearance. It has great flexibility, fixed and adjustable, suitable for a variety of roofs, convenient installation, very popular with customers.



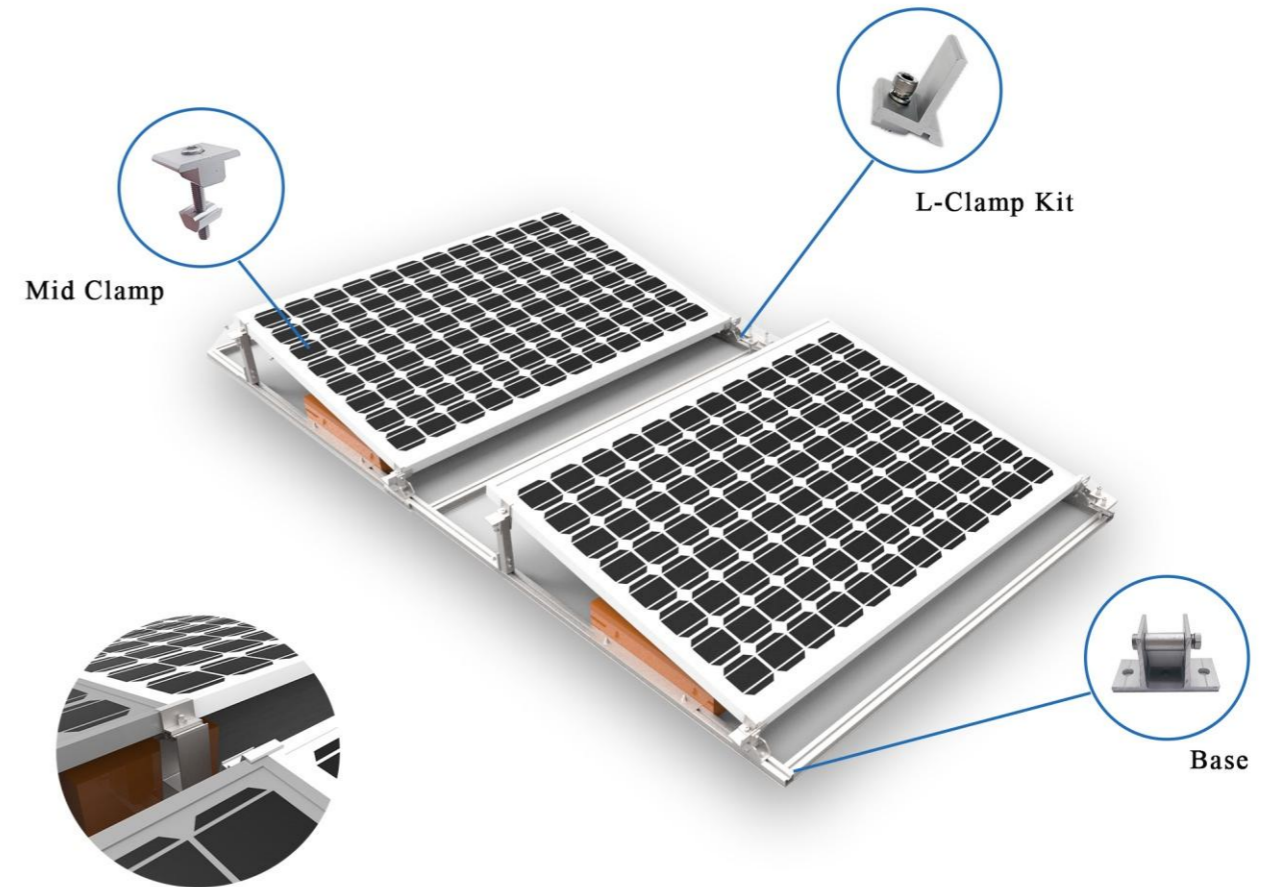
| Technical Parameters | | | |
|----------------------|---------------------------------|------------------|---------------------------------------|
| System Name | Solar Tile Roof Mounting System | Design Standard | AS/NZS 1170、DIN 1055、JIS C8955: 2017 |
| Installation Site | Pitched Roof | | International Building Code: IBC 2009 |
| Tilt Angle | 5-45° | | California Building Code: CBC 2010 |
| Wind Load | 60m/s | Material | SUS304 |
| Snow Load | 2.0KN/ m² | Fastener | SUS304 |
| Module | Framed or Frameless | Small Components | AL6005-T5(Anodized) |
| Panel Layout | Portrait or Landscape | Warranty | 10-year warranty |

平屋顶支架

Solar Flat Roof Mounting System



Solar flat roof mounting systems are suitable for flat roof and tilt roof. The fixed Angle and adjustable Angle are acceptable, and the installation is simple and quick.

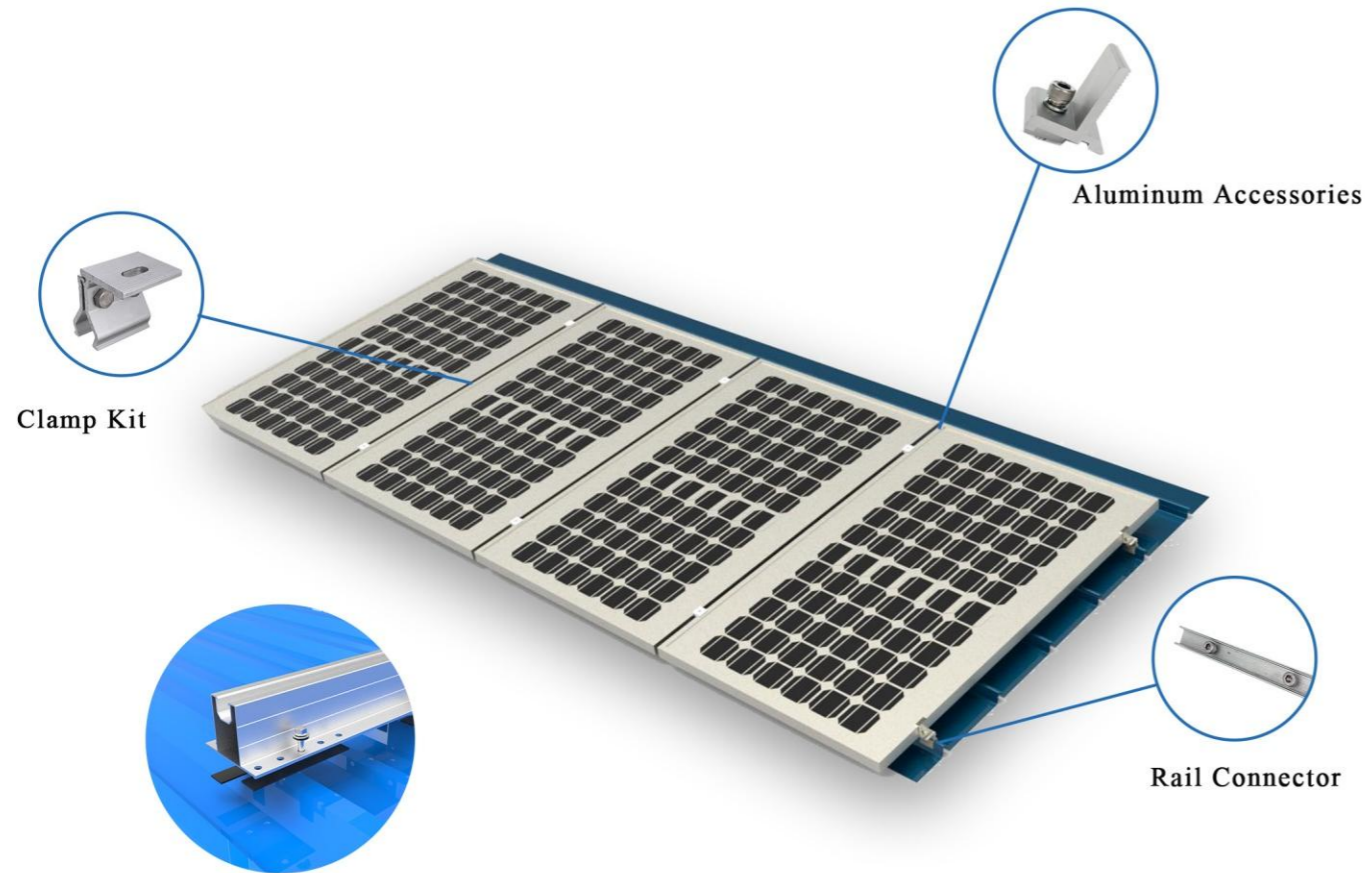


| Technical Parameters | | | |
|----------------------|---------------------------------|------------------|---------------------------------------|
| System Name | Solar Flat Roof Mounting System | Design Standard | AS/NZS 1170、DIN 1055、JIS C8955: 2017 |
| Installation Site | Flat Roof ,Ground | | International Building Code: IBC 2009 |
| Tilt Angle | 5-10° | | California Building Code: CBC 2010 |
| Wind Load | 60m/s | Material | AL6005-T5(Anodized) |
| Snow Load | 1.6KN/ m² | Fastener | SUS304 |
| Module | Framed | Small Components | AL6005-T5(Anodized) |
| Panel Layout | Landscape | Warranty | 10-year warranty |

铁皮屋顶支架 Solar Metal Roof Mounting System



Solar metal roof mounting system light weight, light transport, convenient transportation, installation and safe construction, can meet different customer needs of a variety of solutions.

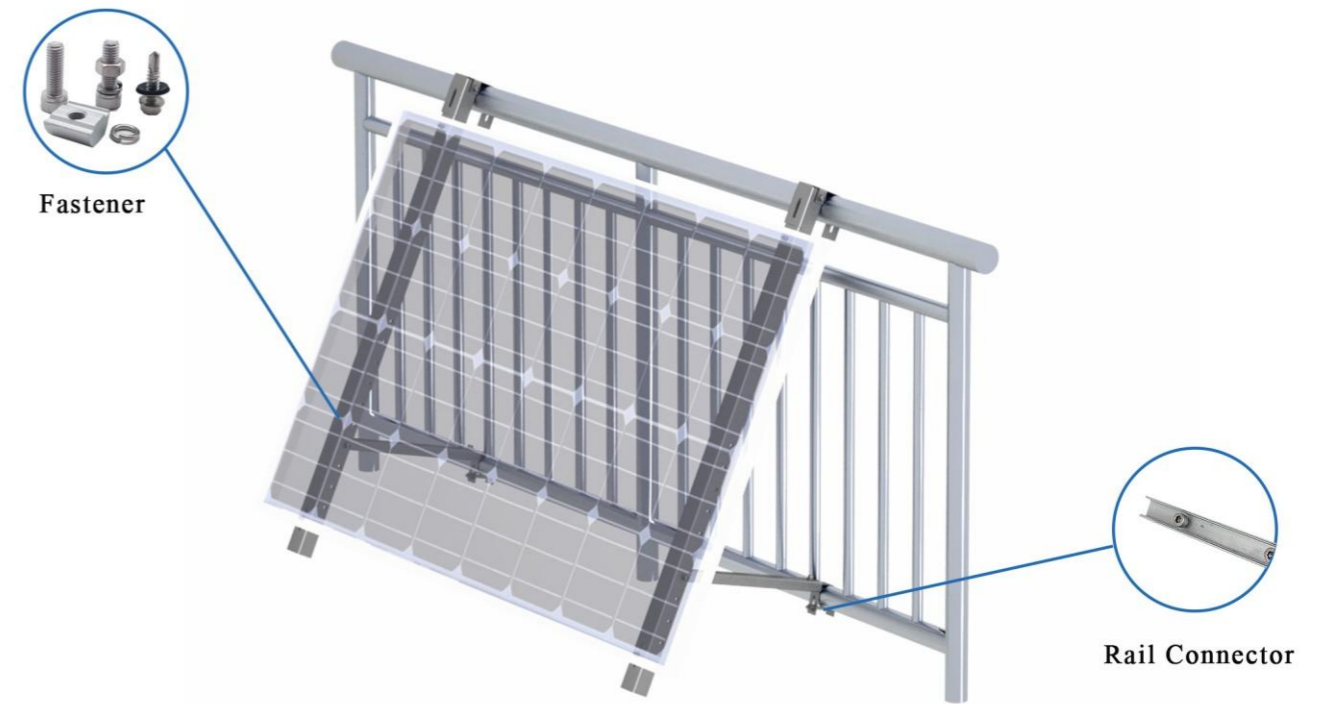


| Technical Parameters | | | |
|----------------------|----------------------------------|------------------|---------------------------------------|
| System Name | Solar Metal Roof Mounting System | Design Standard | AS/NZS 1170、DIN 1055、JIS C8955: 2017 |
| Installation Site | Pitched Roof | | International Building Code: IBC 2009 |
| Tilt Angle | 5-45° | | California Building Code: CBC 2010 |
| Wind Load | 60m/s | Material | SUS304 |
| Snow Load | 2.0KN/ m ² | Fastener | SUS304 |
| Module | Framed or Frameless | Small Components | AL6005-T5(Anodized) |
| Panel Layout | Portrait or Landscape | Warranty | 10-year warranty |

阳台光伏支架 Solar Balcony Mount



Solar Balcony Mount can be installed directly on the balcony or wall without taking up extra space or causing damage to the building structure. The installation is suitable for the main types of photovoltaic modules on the market and is easy to install.

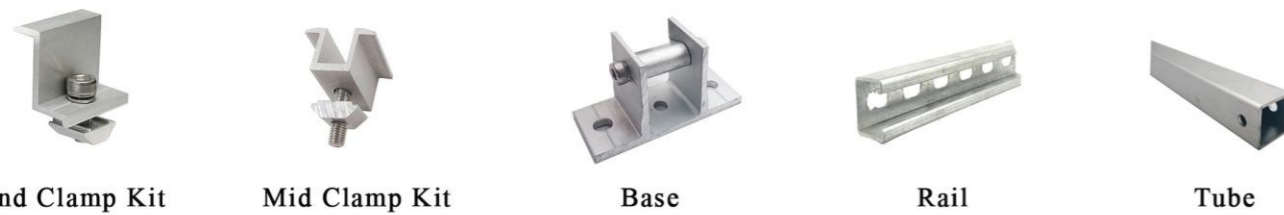
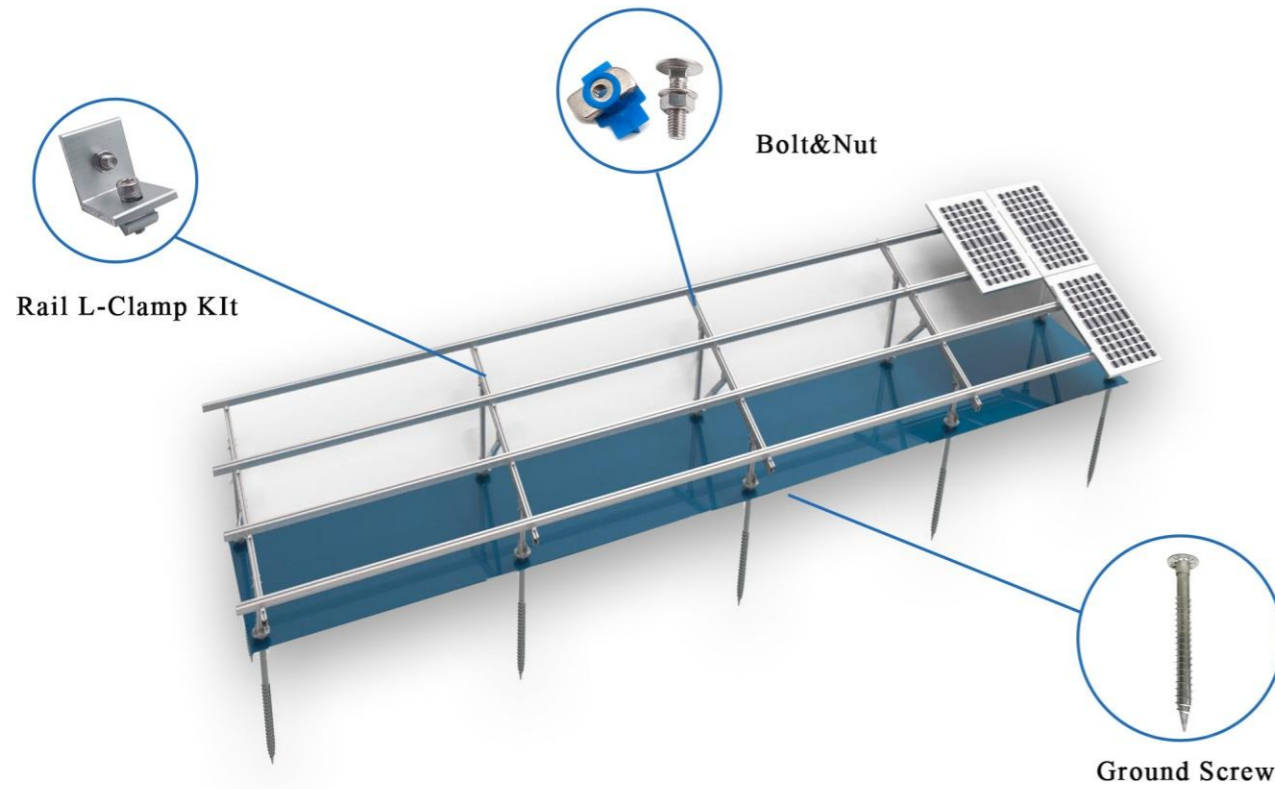


| Technical Parameters | | | |
|----------------------|-----------------------|------------------|---------------------------------------|
| System Name | Solar Balcony Mount | Design Standard | AS/NZS 1170、DIN 1055、JIS C8955: 2017 |
| Installation Site | Pitched Roof | | International Building Code: IBC 2009 |
| Tilt Angle | 5-45° | | California Building Code: CBC 2010 |
| Wind Load | 60m/s | Material | SUS304 |
| Snow Load | 2.0KN/ m ² | Fastener | SUS304 |
| Module | Framed or Frameless | Small Components | AL6005-T5(Anodized) |
| Panel Layout | Portrait or Landscape | Warranty | 10-year warranty |

太阳能地面支架 Solar Ground Mount



Solar Ground Mount is a practical ground-mounted solution for on-site installation and can adapt to various site conditions. The system has variable slope and height, flexible design, strong combination and high aesthetics to meet the diverse needs of customers.

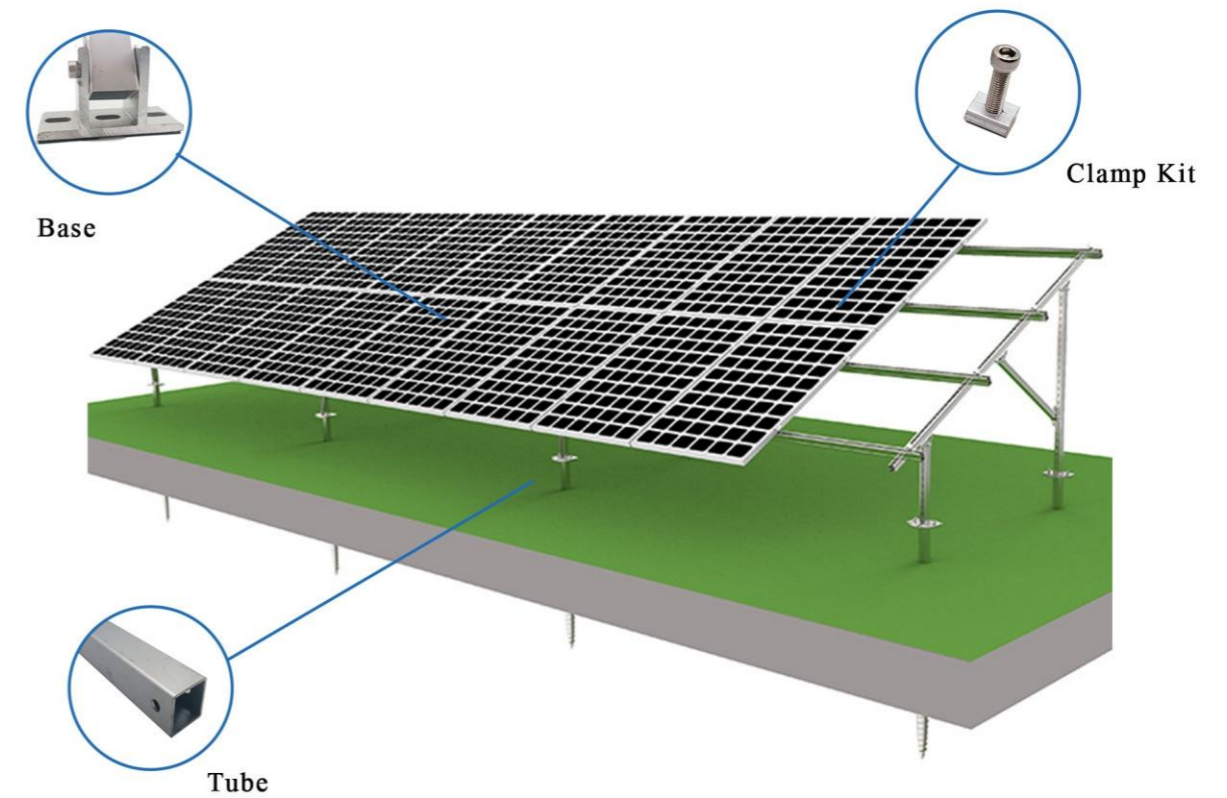


| Technical Parameters | | | |
|----------------------|-----------------------|------------------|---------------------------------------|
| System Name | Solar Ground Mount | Design Standard | AS/NZS 1170、DIN 1055、JIS C8955: 2017 |
| Installation Site | Ground | | International Building Code: IBC 2009 |
| Tilt Angle | 0-60° | | California Building Code: CBC 2010 |
| Wind Load | 60m/s | Material | AL6005-T5(Anodized) |
| Snow Load | 1.6KN/ m ² | Fastener | SUS304 |
| Module | Framed or Frameless | Small Components | AL6005-T5(Anodized) |
| Panel Layout | Portrait | Warranty | 10-year warranty |

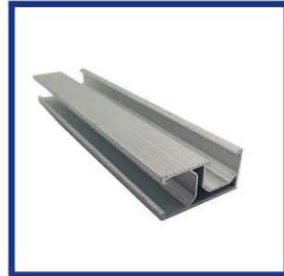
太阳能农业支架 Solar Farm Mount



Solar Farm Mount System is mainly suitable for farms, it is light weight, convenient transportation and installation, construction safety, maximum pre-assembly, saving construction time and labor costs.



| Technical Parameters | | | |
|----------------------|-------------------------|------------------|---------------------------------------|
| System Name | Solar Farm Mount System | Design Standard | AS/NZS 1170、DIN 1055、JIS C8955: 2017 |
| Installation Site | Farmland | | International Building Code: IBC 2009 |
| Tilt Angle | 0-60° | | California Building Code: CBC 2010 |
| Wind Load | 60m/s | Material | AL6005-T5(Anodized) |
| Snow Load | 1.6KN/ m ² | Fastener | SUS304 |
| Module | Framed or Frameless | Small Components | AL6005-T5(Anodized) |
| Panel Layout | Portrait or Landscape | Warranty | 10-year warranty |



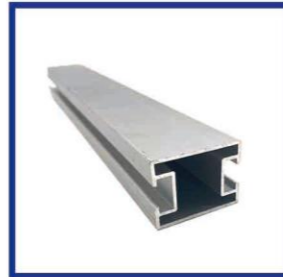
HINA-RAIL001
铝型材导轨
Aluminum Rail
Surface:Oxidation
Material: AL6005, AL6063



HINA-RAIL006
铝型材导轨
Aluminum Rail
Surface:Oxidation
Material: AL6005, AL6063



HINA-RAIL002
铝型材导轨
Aluminum Rail
Surface:Oxidation
Material: AL6005, AL6063



HINA-RAIL007
铝型材导轨
Aluminum Rail
Surface:Oxidation
Material: AL6005, AL6063



HINA-RAIL003
铝型材导轨
Aluminum Rail
Surface:Oxidation
Material: AL6005, AL6063



HINA-RAIL008
铝型材导轨
Aluminum Rail
Surface:Oxidation
Material: AL6005, AL6063



HINA-RAIL004
铝型材导轨
Aluminum Rail
Surface:Oxidation
Material: AL6005, AL6063



HINA-RAIL009
铝型材导轨
Aluminum Rail
Surface:Oxidation
Material: AL6005, AL6063



HINA-RAIL005
铝型材导轨
Aluminum Rail
Surface:Oxidation
Material: AL6005, AL6063



HINA-RAIL010
铝型材导轨
Aluminum Rail
Surface:Oxidation
Material: AL6005, AL6063



HINA-GS001
螺旋地桩(法兰系列)
Ground Screw(Flange)
Surface:HDG Spray
Material:Q235B Q355B



HINA-SC001
U型钢
U Steel Channel
Surface:HDG,Spray,Zinc
Aluminum Magnesium
Material:Q235B Q355B



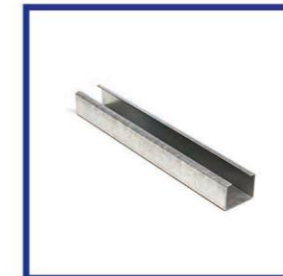
HINA-GS002
螺旋地桩
Ground Screw
Surface:HDG Spray
Material:Q235B Q355B



HINA-SC002
U型钢
U Steel Channel
Surface:HDG,Spray,Zinc
Aluminum Magnesium
Material:Q235B Q355B



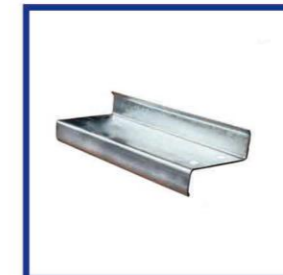
HINA-GS003
螺旋地桩
Ground Screw
Surface:HDG Spray
Material:Q235B Q355B



HINA-SC003
C型钢
C teel Channel
Surface:HDG,Spray,Zinc
Aluminum Magnesium
Material:Q235B Q355B



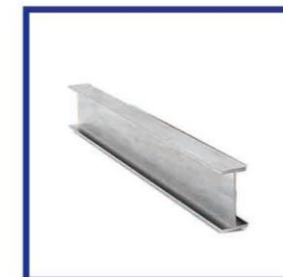
HINA-GS004
螺旋地桩
Ground Screw
Surface:HDG Spray
Material:Q235B Q355B



HINA-SC004
Z型钢
Z Steel Channel
Surface:HDG,Spray,Zinc
Aluminum Magnesium
Material:Q235B Q355B



HINA-GS005
螺旋地桩(大螺旋片系列)
Ground Screw
Surface:HDG Spray
Material:Q235B Q355B



HINA-SC005
H型钢
H Steel Channel
Surface:HDG,Spray,Zinc
Aluminum Magnesium
Material:Q235B Q355B



HINA-HOOK001

三组合挂钩
Adjustable Solar Hook

Material:SS304,SS430,
SS201,Q195



HINA-HOOK006

平瓦挂钩
Fixed Solar Hook

Material:SS304,SS430,
SS201,Q195



HINA-HOOK002

固定挂钩
Fixed Solar Hook

Material:SS304,SS430,
SS201,Q195



HINA-HOOK007

直挂钩
Fixed Solar Hook

Material:SS304,SS430,
SS201,Q195



HINA-HOOK003

两组合挂钩
Adjustable Solar Hook

Material:SS304,SS430,
SS201,Q195



HINA-HOOK008

L形挂钩
L Solar Hook

Material:SS304,SS430,
SS201,Q195



HINA-HOOK004

两组合挂钩
Adjustable Solar Hook

Material:SS304,SS430,
SS201,Q195



HINA-HOOK009

扭曲挂钩
Twist Solar Hook

Material:SS304,SS430,
SS201,Q195



HINA-HOOK005

固定挂钩
Fixed Solar Hook

Material:SS304,SS430,
SS201,Q195



HINA-HOOK010

太阳能挂钩
Solar Hook

Material:SS304,SS430,
SS201,Q195



HINA-HBOLT001

自攻双头螺栓
Hanger Bolt For Wood

Size:M8 M10
Length:150-500mm
Material:SS304,SS410



HINA-HBOLT006

双头螺栓
Hanger Bolt For Concrete

Size:M8 M10
Length:150-500mm
Material:SS304,SS410



HINA-HBOLT002

碳钢自攻双头螺栓
Steel Hanger Bolt For Wood

Size:M8 M10
Length:150-500mm
Material:C1022,10B21



HINA-HBOLT007

双头螺栓
Hanger Bolt

Size:M8 M10
Length:150-500mm
Material:SS304,SS410



HINA-HBOLT003

自钻双头螺栓
Hanger Bolt With Self
Drilling

Size:M8 M10
Length:150-500mm
Material:SS304,SS410



HINA-HBOLT008

双头螺栓(巴西)
Hanger Bolt (Brazil)

Size:M8 M10
Length:150-500mm
Material:SS304,SS410



HINA-HBOLT004

碳钢自钻双头螺栓
Steel Hanger Bolt With
Self Drilling

Size:M8 M10
Length:150-500mm
Material:C1022,10B21



HINA-HBOLT009

双头螺栓(欧洲)
Hanger Bolt (Europe)

Size:M8 M10
Length:150-500mm
Material:SS304,SS410



HINA-HBOLT005

钢构双头螺栓
Hanger Bolt For Steel

Size:M8 M10
Length:150-500mm
Material:SS304,SS410



HINA-HBOLT010

双头螺栓
Hanger Bolt

Size:M8 M10
Length:150-500mm
Material:SS304,SS410



HINA-BOLT001

马车螺栓
Carriage Bolt DIN603

Size:M6-M20
Material:SS304/SS316
SS201/4.8/5.8/8.8



HINA-BOLT006

方形螺栓
Square Head Bolt

Size:M6-M20
Material:SS304/SS316
SS201/4.8/5.18/8.8



HINA-BOLT002

法兰螺栓
Flange Bolt DIN6921

Size:M6-M20
Material:SS304/SS316
SS201/4.8/5.18/8.8



HINA-BOLT007

梯形螺栓
T Bolt

Size:M6-M20
Material:SS304/SS316
SS201/4.8/5.18/8.8



HINA-BOLT003

六角螺栓
Hexagon Bolt DIN933

Size:M6-M20
Material:SS304/SS316
SS201/4.8/5.18/8.8



HINA-BOLT008

梯形螺栓
T Bolt

Size:M6-M20
Material:SS304/SS316
SS201/4.8/5.18/8.8



HINA-BOLT004

内六角法兰螺栓
Hex Socket Flange Bolt

Size:M6-M20
Material:SS304/SS316
SS201/4.8/5.18/8.8



HINA-SCREW011

内六角滚花螺钉
Hex Socket Knurled Screw
DIN912

Size:M6-M20
Material:SS304/SS316
SS201 /4.8/5.18/8.8



HINA-BOLT005

非标螺栓
Non-Standard Bolt

Size:M6-M20
Material:SS304/SS316
SS201/4.8/5.18/8.8



HINA-SCREW012

内六角圆头螺钉
Hex Socket Head Screw
ISO7380

Size:M6-M20
Material:SS304/SS316
SS201/4.8/5.18/8.8



HINA-NUT001

法兰螺母
Flange Nut DIN6923

Size:M6-M20
Material:SS304/SS316
SS201/4.8



HINA-NUT006

塑衣螺母
Spring Nut

Size:M6-M20
Material:SS304/
SS316 SS201/4.8



HINA-NUT002

六角螺母
Hexagon Nut DIN934

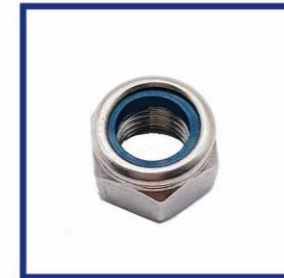
Size:M6-M20
Material:SS304/SS316
SS201/4.8



HINA-NUT007

弹簧螺母
Spring Nut

Size:M6-M20
Material:SS304/
SS316 SS201/4.8



HINA-NUT003

尼龙紧锁螺母
Nylon Lock Nut

Size:M6-M20
Material:SS304/SS316
SS201/4.8



HINA-NUT008

弹珠螺母
T-Slot Nut

Size:M8
Material:AL6063,AL6005



HINA-NUT004

梯形螺母
T Nut

Size:M6-M20
Material:SS304/SS316
SS201/4.8



HINA-NUT009

菱形螺母
Diamond Nut

Size:M6-M20
Material:SS304/SS316
SS201/4.8



HINA-NUT005

四方螺母
Square Nut DIN557

Size:M6-M20
Material:SS304/SS316
SS201/4.8



HINA-NUT010

菱形螺母
Diamond Nut

Size:M6-M20
Material:SS304/SS316
SS201/4.8



HINA-SCREW001
双金属自攻螺丝
Bimetal Screw
Size:M4.8 M5.5 M6
Material:SS304+SS410,
SS304+SCM435



HINA-SCREW006
内六角圆头带垫螺钉
Hex Socket Pan Head
Screw ISO7380-2
Size:M4 M5 M6 M8
Material:SS304,SS201,
Q195,C1022



HINA-SCREW002
六角法兰自攻螺丝
Hexagon Flange Self-
Tapping Screw
Size:ST2.2-ST8
Material:C1022



HINA-SCREW007
双金属自钻螺丝
Bimetal Screw
Size:M4.8 M5.5 M6
Material:SS304+SS410,
SS304+SCM435



HINA-SCREW003
不锈钢草绳钉
Self-Tapping Screw With
Cutting Rail
Size:T2.2-ST8
Material:SS304,SS201,
Q195,C1022



HINA-SCREW008
十字槽盘头自钻螺丝
Cross Recessed Pan Head
Drilling Screws
Size:ST2.9-ST6.3
Material:SS304,SS201,
Q195,C1022



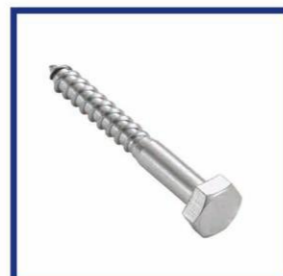
HINA-SCREW004
沉头麻花自攻螺丝
Self-Tapping Screw
Size:ST2.2-ST8
Material:SS304,SS201,
Q195,C1022



HINA-SCREW009
六角法兰自钻螺丝
Hexagon Flange Self-
Drilling Screw
Size:ST2.2-ST8
Material:SS304,SS201,
Q195,C1022



HINA-SCREW005
十字槽沉头木螺钉
Wood Screw DIN7997
Size:M8 M10 M12
Material:SS304,SS201,
Q195,C1022



HINA-SCREW010
六角头木螺钉
Hex Head Wood Screw
DIN571
Size:M4 M5 M6 M8
Material:SS304,SS201,
Q195,C1022



HINA-WASHER001
平垫圈
Washer
Size:M8 M10 M12
Material:SS304,SS430,
SS201,Q195



HINA-WASHER006
EPDM垫圈
EPDM Washer
Size:M4 M5 M6 M8
Material:EPDM



HINA-WASHER002
弹簧垫圈
Spring Lock Washer
Size:M8 M10 M12
Material:SS304,SS430,
SS201,Q195



HINA-WASHER007
EPDM垫圈
EPDM Washer
Size:M4 M5 M6 M8
Material:EPDM



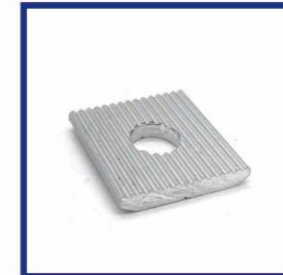
HINA-WASHER003
弹簧垫圈
Spring Lock Washer
Size:M8 M10 M12
Material:SS304,SS430,
SS201,Q195



HINA-WASHER008
EPDM垫圈
EPDM Washer
Size:M4 M5 M6 M8
Material:EPDM



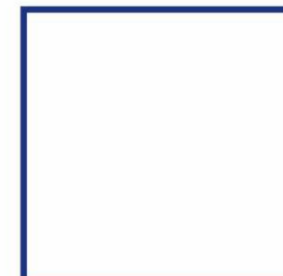
HINA-WASHER004
防滑垫圈
Embossed Washer
Size:M4 M5 M6 M8
Material:SS304,SS316,
SS201,Q195



HINA-WASHER009
滑块垫片
Slide Nut
Size:M4 M5 M6 M8



HINA-WASHER005
双叠自锁垫圈
Double Fold Self-Locking
Washer DIN25201
Size:M4 M5 M6 M8
Material:SS304,SS316





HINA-CLAMP001
中压
Mid Clamp
Surface:Oxidation
Material: AL6005, AL6063



HINA-CLAMP006
边压
End Clamp
Surface:Oxidation
Material: AL6005, AL6063



HINA-CLAMP002
薄膜中压
Mid Clamp
Surface:Oxidation
Material: AL6005, AL6063



HINA-CLAMP007
薄膜边压
End Clamp
Surface:Oxidation
Material: AL6005, AL6063



HINA-CLAMP003
夹具
Solar Clamp
Surface:Oxidation
Material: AL6005, AL6063



HINA-CLAMP008
边压
End Clamp
Surface:Oxidation
Material: AL6005, AL6063



HINA-CLAMP004
夹具
Solar Clamp
Surface:Oxidation
Material: AL6005, AL6063



HINA-CLAMP009
中压
Mid Clamp
Surface:Oxidation
Material: AL6005, AL6063



HINA-CLAMP005
夹具
Solar Clamp
Surface:Oxidation
Material: AL6005, AL6063



HINA-CLAMP010
夹具
Solar Clamp
Surface:Oxidation
Material: AL6005, AL6063



导轨连接件
Rail Connect
Surface:Oxidation
Material: AL6005, AL6063



铝支架
Aluminum Bracket
Surface:Oxidation
Material: AL6005, AL6063



导轨连接件
Rail Connect
Surface:Oxidation
Material: AL6005, AL6063



铝支架
Aluminum Bracket
Surface:Oxidation
Material: AL6005, AL6063



导轨连接件
Rail Connect
Surface:Oxidation
Material: AL6005, AL6063



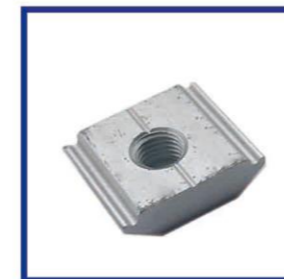
接地块
Ground Lug
Surface:Oxidation
Material: AL6005, AL6063



滑块螺母
Slide Nut
Size:M4 M5 M6 M8
Material: AL6005, AL6063



L形底座
L Foot
Surface:Oxidation
Material: AL6005, AL6063



滑块螺母
Slide Nut
Size:M4 M5 M6 M8
Material: AL6005, AL6063



底座
Base
Surface:Oxidation
Material: AL6005, AL6063



连接块
Adapate Plate
Material: SS304,SS316,
SS201,Q195



铆钉
Rivet
Material:SS304,SS316



连接件
Adapate Kit
Material: SS304,SS316,
SS201,Q195



膨胀螺栓
Expansion Bolt
Material:SS304,SS316



不锈钢夹具
Stainless Steel Clamp
Material:SS304,SS316



紧定螺钉
Set Bolt
Material:SS304,SS316



挂钩
Solar Bracket
Material:SS304,SS430,
SS201,Q195



U形螺栓
U Bolt 01
Material:SS304,SS316,
SS201,Q195



挂钩
Solar Bracket
Material:SS304,SS430,
SS201,Q195



U形螺栓
Square U Bolt
Material:SS304,SS316,
SS201,Q195



光伏线夹01
Cable Tie 01
Material:SS304,SS316



导电片01
Conducting Strip 01
Material:SS304,SS316



光伏线夹02
Cable Tie 02
Material:SS304,SS316



导电片02
Conducting Strip 02
Material:SS304,SS316

