

「 210mm mono PERC half-cell, high-efficiency bifacial module 」

# 530-555W 0-5W Positive Tolerance



### MBB&SMBB Half-cut Cell Technology

New circuit design, lower internal current, and lower Rs loss.



### High Power Density

A new generation of monocrystalline products with reduced resistive losses for greater power output.



### Mechanical Properties

An aluminum frame in special design for better mechanical properties and more efficient installation.



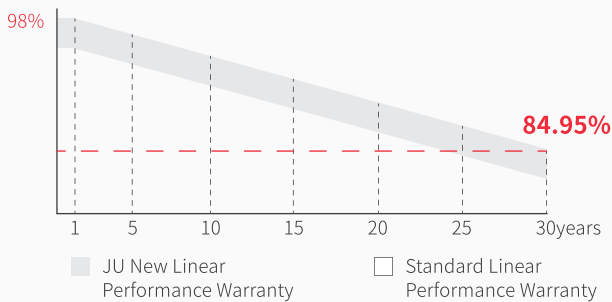
### Excellent Weather Resistance

The solar modules can meet the IEC standard requirements with strong resistant to risks such as salt spray, ammonia gas, dust, snail marks and electric potential induced attenuation.



### 4 Times 100% EL Detection

Guarantee no micro cracks

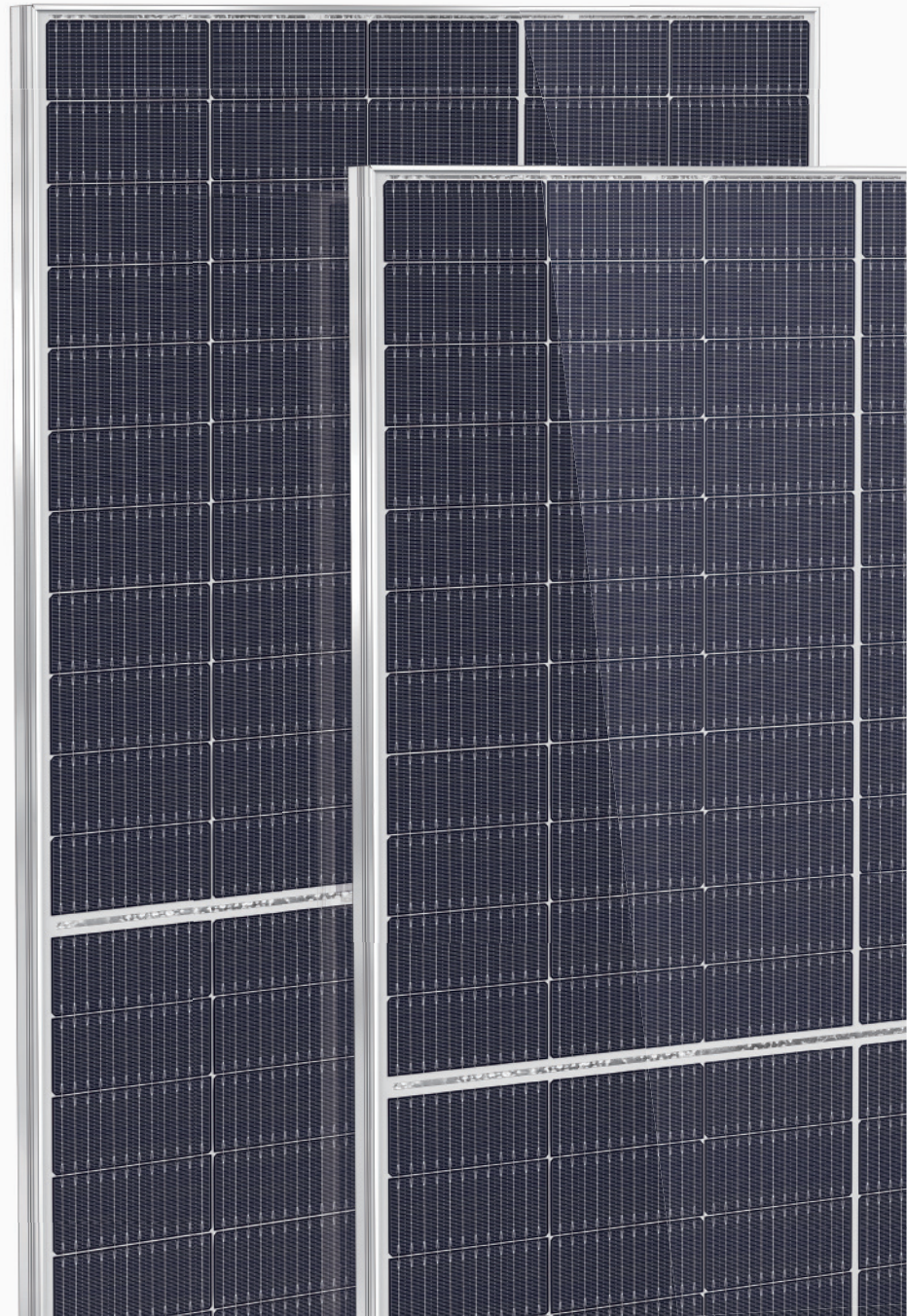


**12years** Material & process Warranty

**30years** Linear Performance Warranty

**0.45%** Linear Power Degradation

## PRODUCT QUALITY SYSTEM & CERTIFICATION



## ELECTRICAL PROPERTIES

**JU-210M-55HBG 110PCS**

**STC** : irradiance, 1000W/m<sup>2</sup>; cell temperature, 25°C; spectral range, AM1.5

**NOCT**: irradiance, 800 W/m<sup>2</sup>; ambient temperature, 20 °C; spectral range, AM1.5; wind speed, 1m/s

|   | STC    | NOCT  | STC    | NOCT  | STC    | NOCT  | STC    | NOCT  | STC    | NOCT  | STC    | NOCT  |
|---|--------|-------|--------|-------|--------|-------|--------|-------|--------|-------|--------|-------|
| Maximum power - P <sub>mp</sub> (W)             | 530    | 401   | 535    | 405   | 540    | 409   | 545    | 413   | 550    | 416   | 555    | 420   |
| Open-circuit voltage - V <sub>oc</sub> (V)      | 37.30  | 35.10 | 37.50  | 35.30 | 37.70  | 35.50 | 37.90  | 35.70 | 38.10  | 35.90 | 38.30  | 36.10 |
| Short-circuit current - I <sub>sc</sub> (A)     | 18.19  | 14.66 | 18.24  | 14.70 | 18.30  | 14.75 | 18.35  | 14.79 | 18.39  | 14.82 | 18.44  | 14.85 |
| Maximum operating voltage - V <sub>mp</sub> (V) | 31.00  | 28.80 | 31.20  | 29.00 | 31.40  | 29.20 | 31.60  | 29.40 | 31.80  | 29.50 | 32.00  | 29.60 |
| Maximum operating current - I <sub>mp</sub> (A) | 17.11  | 13.93 | 17.16  | 13.97 | 17.21  | 14.02 | 17.24  | 14.08 | 17.29  | 14.10 | 17.34  | 14.12 |
| Module conversion efficiency - η <sub>m</sub>   | 20.28% |       | 20.48% |       | 20.67% |       | 20.86% |       | 21.05% |       | 21.24% |       |

## ELECTRICAL PROPERTIES VERSUS POWER GAINS FROM THE REAR (TAKING A IRRADIANCE OF 10%)

|   |       |       |       |       |       |        |
|---|-------|-------|-------|-------|-------|--------|
| Maximum power - P <sub>mp</sub> (W)             | 567   | 573   | 578   | 583   | 589   | 593.85 |
| Open-circuit voltage - V <sub>oc</sub> (V)      | 37.30 | 37.50 | 37.70 | 37.90 | 38.10 | 38.30  |
| Short-circuit current - I <sub>sc</sub> (A)     | 19.46 | 19.52 | 19.58 | 19.63 | 19.68 | 19.73  |
| Maximum operating voltage - V <sub>mp</sub> (V) | 31.00 | 31.20 | 31.40 | 31.60 | 31.80 | 32.00  |
| Maximum operating current - I <sub>mp</sub> (A) | 18.31 | 18.36 | 18.41 | 18.44 | 18.50 | 18.55  |
| Irradiance ratio (Rear / Front)                 | 10%   |       |       |       |       |        |
| Bifaciality                                     | 70±5% |       |       |       |       |        |

## ABSOLUTE RATING

|                                |                        |
|--------------------------------|------------------------|
| Power tolerance (W)            | (0, +5)                |
| Mechanical load                | Front5400Pa/Back2400Pa |
| Maximum system voltage (V)     | 1500                   |
| Maximum series fuse rating (A) | 30                     |
| Operating temperature          | -40~+85°C              |

## MECHANICAL PROPERTIES

|                          |  |
|--------------------------|--|
| Module dimensions(L*W*H) | 2384 x 1096 x 35mm                               |
| Weight                   | 32.3kg   |
| Cell quantity            | 110PCS   |
| Cell model               | PERC Monocrystalline210 x 105mm                  |
| Glass                    | 2.0mm AR, High Transmission, semi-tempered glass |
| Frame                    | Anodized aluminium alloy                         |
| Junction box             | IP68 Rated                                       |
| Output line              | 4.0mm <sup>2</sup> , wire length 300mm           |
| Connector                | MC4 Compatible                                   |

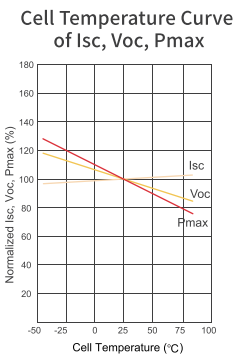
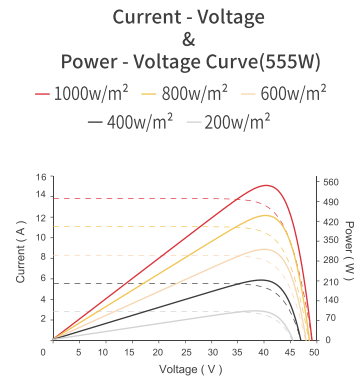
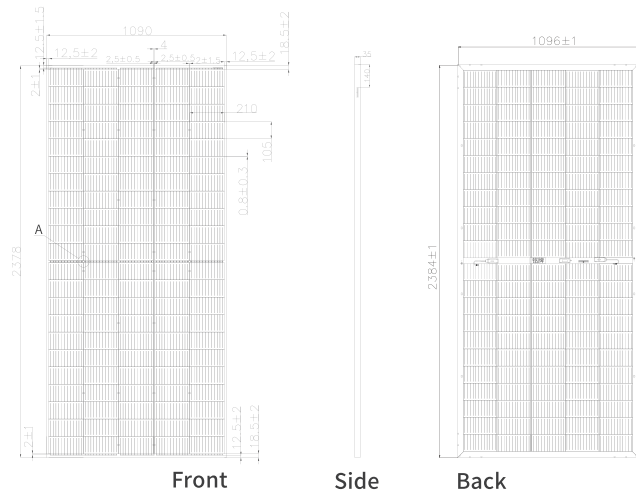
## TEMPERATURE CHARACTERISTIC

|   |             |
|---|-------------|
| Temperature coefficient (P <sub>max</sub> ) | -0.34% / °C |
| Temperature coefficient (V <sub>oc</sub> )  | -0.25% / °C |
| Temperature coefficient (I <sub>sc</sub> )  | +0.04% / °C |
| NMOT  | 43±2°C      |

## PACKAGING

|                 |      |
|-----------------|------|
| Container       | 40HQ |
| PCS / Pallet    | 31   |
| PCS / Container | 620  |

## PRODUCT ASSEMBLY DRAWING(mm)



20GW ODM|OEM Solar Customization



[www.jinenusolar.com](http://www.jinenusolar.com)



[jinyou@jinenusolar.com](mailto:jinyou@jinenusolar.com)



0086-400-888-3165



Zibo JinenU Solar Technology Co., LTD  
3005, Silk Road, Zhoucun District, Zibo,  
Shandong, China

Taizhou JinenU New Energy Co., LTD  
568, Taizhou Road, Jiangyan District, Taizhou,  
Jiangsu, China

Tai'an JinenU Solar Co., LTD  
58 Zhongtianmen Street, High-tech Zone, Tai'an,  
Shandong, China