



Ascent 1.1



Ascent 1.1

The PVezRack® Ascent 1.1 is a low ballast, south/north, east-west facing solution without rails for PV installation on flat roofs. With the special design and a tilt angle of 10° and 15°. Ascent 1.1 is suitable for most common flat roof installations.

Main Benefits

Wind Tunnel tested

Ballast reduction through aerodynamic optimized construction. Also tested in boundary layer wind tunnel by the independent wind tunnel test agency, to achieve optimum ventilation for maximum energy output.

Pre-assemble

Pre-assembled inter and end clamp with legs reduce SKU, and also save warehouse and pick up cost.

Click-in technology

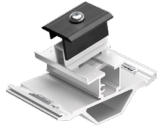
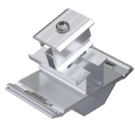
Easy installation and Tool-free assembly of the base rail due to click-in innovative patented design.

Roof friendly

With building protection rubber pad and optimal support surface, Ascent 1.1 achieves exceptional adaptability on flat foil, bitumen and concrete roofs.

Technical Details

Application	Flat roof up to 5°
Setting Angle	10°/15°
Module Orientation	North/South, East-West; Landscape
Roof covering	concrete roof, membrane roof, bitumen roof
Module Size	Length: 1700-2400 mm Width: 990 -1150mm; Height: 28-40 mm
Snow Load	Customised
Wind Load	Customised
Material	Main Components: AL6005-T5 Wind Deflector/Ballast bar: MAC Steel Fasteners: SUS 304 Plate: Polypropylene (PP) and EPDM
Certification	TUV CE Wind Tunnel Test (I.F.I. Institute)
Standard	Eurocode 0-9 BRE489 AS NZS1170.2 JISC8955 ASCE 7-10
Warranty	12 years



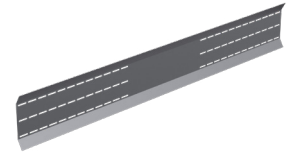
FL-ACV11/G/10 & FL-ACV11/G/15
FL-ACV11/G/10/MI & FL-ACV11/G/15/MI
 Front Leg 10°/15°



RL-ACV11/G/10 & RL-ACV11/G/10/MI
 Rear Leg 10°



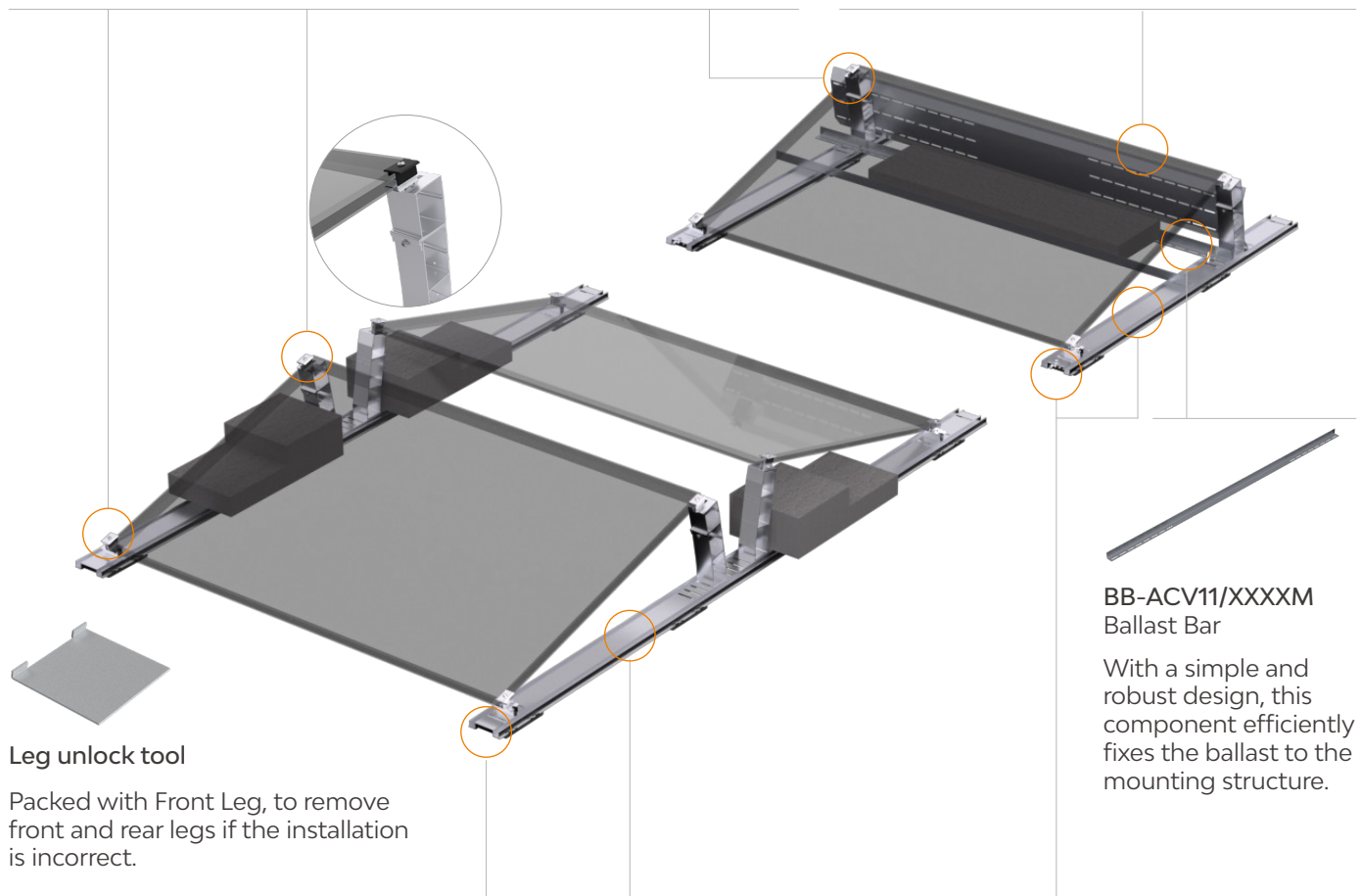
RL-ACV11/G/15 & RL-ACV11/G/15/MI
 Rear Leg 15°



WD-ACV11/XX/XXXXM
 Wind Deflector, 10° and 15°

Made of aluminium, preassembled with end clamp and inter clamp, Front Leg and Rear Leg are click-in assembly to the base rail that offer excellent corrosion resistance.

The wind deflector is fixed to the legs, normally installed on the end of array for deflecting wind and ensuring system stability.

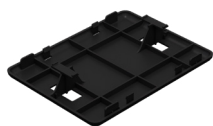


Leg unlock tool

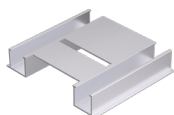
Packed with Front Leg, to remove front and rear legs if the installation is incorrect.

BB-ACV11/XXXXM
 Ballast Bar

With a simple and robust design, this component efficiently fixes the ballast to the mounting structure.



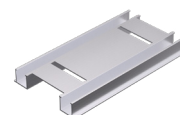
EZ-PM-AC
 Protection Mat



SEB-ACV11/120
 Start and End Base L120



MB-ACV11/EW/XXXX
 Main Base, East-west



CB-ACV11/EW/250
 Connection Base, East-west



MB-ACV11/SN/XXXX
 Main Base, North/south

The Polypropylene & EPDM mat offer a clearance between the roof surface and the base for water drainage. Also achieves exceptional adaptability on flat foil, bitumen and concrete roofs.







PV-ezRACK®

Clenergy

Willy-Brandt-Straße 23,
20457 Hamburg, Germany

Phone: +86 592 311 0088
Email: sales@clenergy.com
Web: www.clenergy.com

 @ClenergyGlobal / @ClenergyClub / @ClenergyAUS / @ClenergyThailand
 @Clenergy_global  @Clenergy  @Clenergy

A Clenergy Technologies Company

