

BaseRack

# DOUBLE-ROW TRIPOD BASE-BEAM-FREE RMIV

## Overview

Double-row Tripod Base-beam-free RMIV is derived from RM II to meet different roof projects demands. Solar modules can be arranged with single or double rows of landscape or portrait orientation. Quick installation and stable structure are assured by the modular Patented design.



Applied to Flat Roof



Tilt Angle  
0-60°



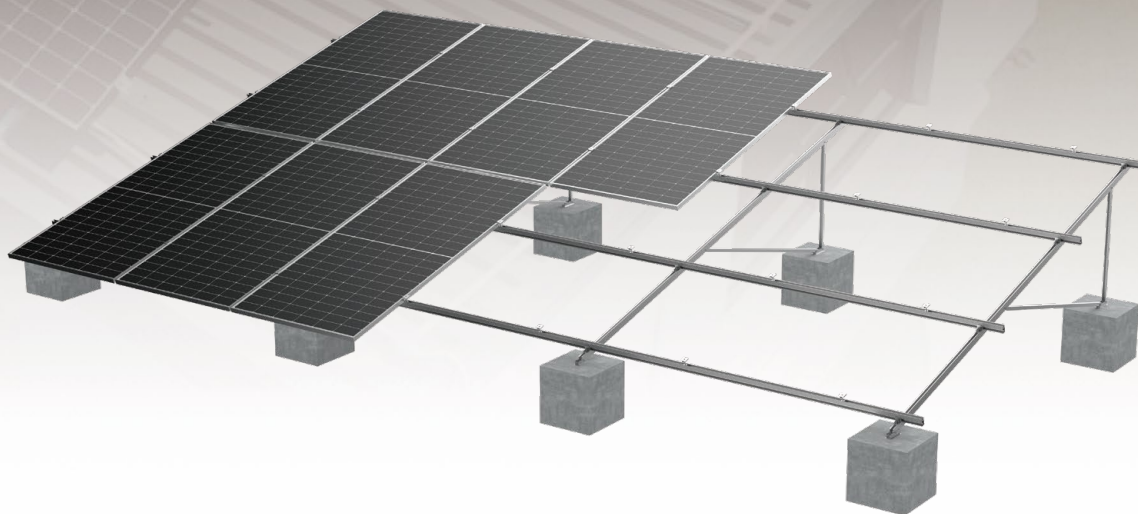
Suitable for framed  
Solar Modules



Panel Layout:  
Landscape or Portrait

10  
YEARS

Warranty



## Advantages

### System Compatibility

Components mostly pre-assembled in factory to assure quick and reliable installation on site. Suitable for different flat rooftop, and compatible to different types of solar modules.

### Adjustability

Tilt angle can be adjustable

### Unique Mudsill Design

The mudsill can be fixed to flat roof or pitched roof with concrete foundation or steel foundation.

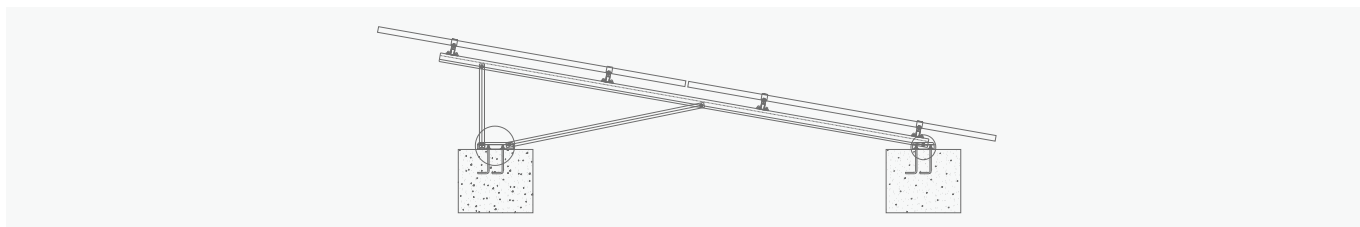
### Solar Module Layout Flexibility

Both landscape and portrait solar module layout are suitable. Both single row and double rows layout can be achieved separately or combined.

## Technical Parameters

System Name	Double-row Tripod Base-beam-free RMIV	Design Standard	Euro Code/EN1991/1993/1994, BS 6399, ASCE 7-10
Installation Site	Flat roof, ground		International Building Code IBC 2009, California Building Code CBC 2010
Roof Type	Concrete foundation, steel foundation	Hook Material	AL6005-T5(Anodized)
Tilt Angle	0-60°	Fastener	SUS304 & Zinc-Nickel Alloy Electroplated Steel
Wind Load	≤60m/s	Small Components	AL6005-T5(Anodized)
Snow Load	≤1.6KN/m <sup>2</sup>	Color	Silver or Customized
Applicable Solar Module	Framed or Frameless	Warranty	10-Year Warranty
Panel Layout	Portrait or Landscape		

## Structure



## Component Details



### MA Rail

**Specification :**  
3100/4100/5100mm  
**Material :**  
AL6005-T5(Anodized)



### Splice kit for MA Rail

**Specification :**  
L1200  
**Material :**  
AL6005-T5(Anodized)



### End clamp kit(MA)

**Components :**  
End Clamp  
Cross Module  
Spring Washer M8  
Hex Socket Head Bolt



### Inter Clamp Kit(MA)

**Components :**  
Inter Clamp  
Cross Module  
Spring Washer M8  
Hex Socket Head Bolt



### Rail Clamp(MA)

**Material :**  
AL6005-T5(Anodized)



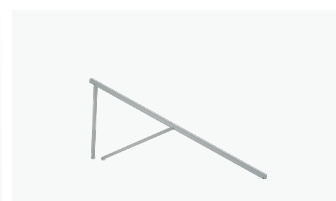
### RMIV Back Base

**Material :**  
Steel Q235B  
(Hot-Dip Galvanized)



### RMIV Front Base

**Material :**  
Steel Q235B  
(Hot-Dip Galvanized)



### Pre-assembled Structure

**Material :**  
AL6005-T5(Anodized)

## Installation Guide



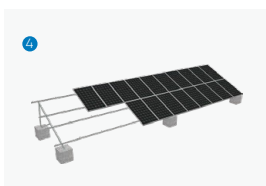
Place the concrete base and install the anchor base



Install pre-assembled structure



Install the rail



Install the panels



Complete installation