



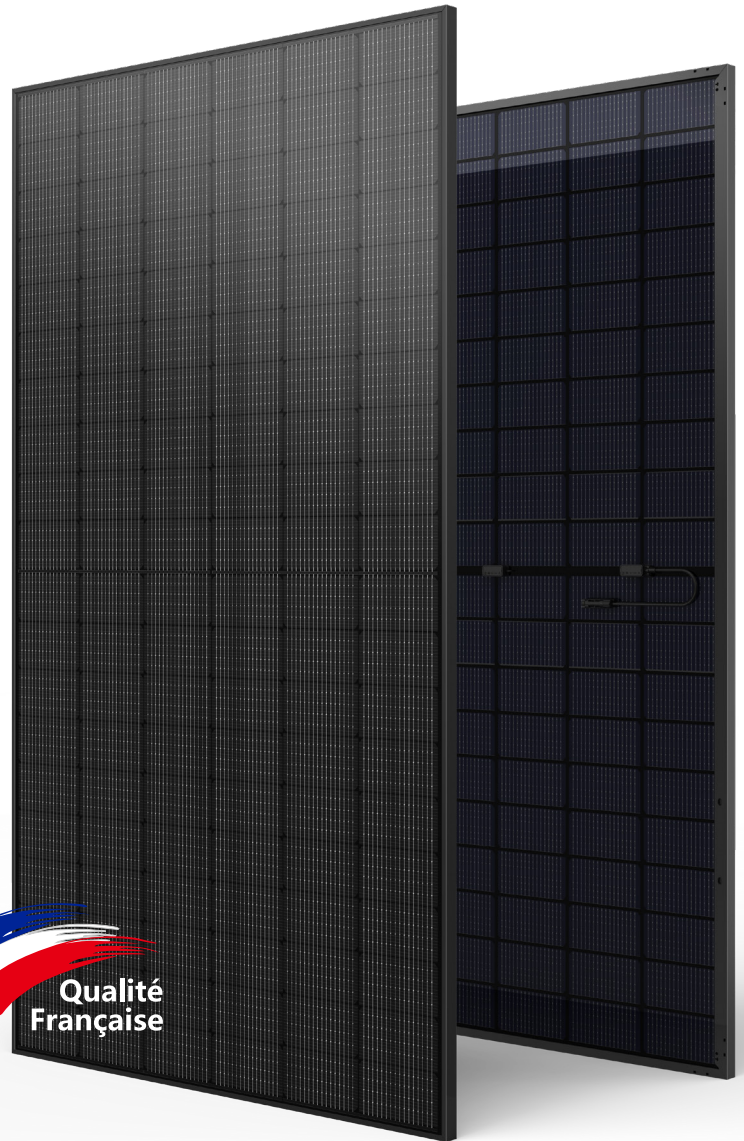
TOPCon

520-540W

M10 / 182mm Cell - 132Half-cells

KEY FEATURES

- Outstanding Power Generation
- Anti PID/ Low LID protection
- Lower temperature coefficient
- Less Hot Spot Shading effects
- Enhanced Bifaciality Factor
- Exceptional Mechanical Resistance



Qualité Française

22.74%
Maximum Efficiency

0~+5W
Positive Power Tolerance

540W
Maximum Power Output

GRADE A
Cells Guaranteed

COMPREHENSIVE CERTIFICATES

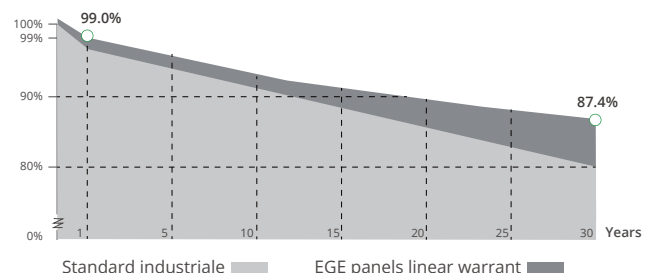
IEC 61215/ IEC 61730 / IEC 61701 / IEC 62716
ISO 9001 : Quality Management Systems



LINEAR PERFORMANCE WARRANTY

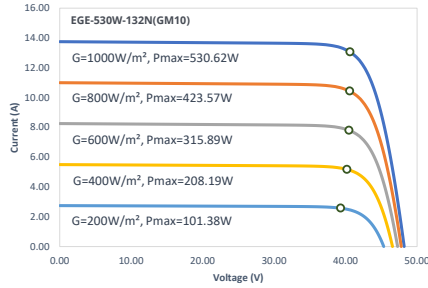
20 Year Product Warranty

30 Year Linear Power Warranty

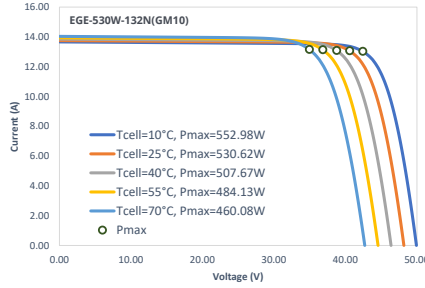


Characteristics

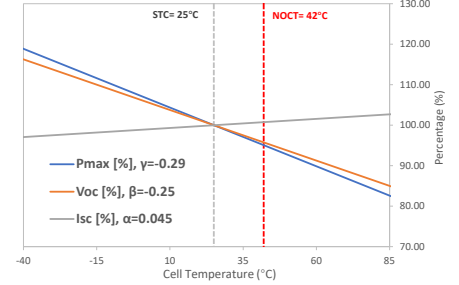
IV-Curves Irradiance



IV-Curves Temperature



Temperature Dependence of Isc, Voc, Pmax



Electrical Characteristics (STC: E=1000W/m² - Tcell=25°C - AM1.5 NOCT: E=800W/m² - T=20°C - v=1m/s BiFi30: 30% irradiance ratio)

Module Type	EGE-520W-132N(GM10)			EGE-525W-132N(GM10)			EGE-530W-132N(GM10)			EGE-535W-132N(GM10)			EGE-540W-132N(GM10)		
	STC	NOCT	BiFi30	STC	NOCT	BiFi30	STC	NOCT	BiFi30	STC	NOCT	BiFi30	STC	NOCT	BiFi30
Power output (Pmax)	520 W	414.9 W	644.8 W	525 W	418.3 W	651.0 W	530 W	422.4 W	657.2 W	535 W	426.2 W	663.4 W	540 W	430.3 W	669.6 W
Maximum power voltage (Vmp)	40.26 V	39.50 V	40.26 V	40.52 V	39.80 V	40.52 V	40.72 V	40.10 V	40.72 V	40.92 V	40.30 V	40.92 V	41.73 V	40.50 V	41.73 V
Maximum power current (Imp)	12.94 A	10.50 A	16.02 A	12.96 A	10.51 A	16.06 A	13.03 A	10.54 A	16.14 A	13.09 A	10.57 A	16.21 A	12.98 A	10.60 A	16.05 A
Open circuit voltage (Voc)	46.07 V	47.20 V	46.07 V	46.27 V	47.50 V	46.27 V	46.66 V	47.80 V	46.66 V	46.93 V	48.00 V	46.93 V	47.30 V	48.30 V	47.30 V
Short circuit current (Isc)	13.71 A	11.05 A	16.97 A	13.73 A	11.07 A	17.02 A	13.76 A	11.09 A	17.04 A	13.78 A	11.11 A	17.06 A	13.67 A	11.14 A	16.89 A
Bifaciality Factor	80% ± 10%														
Power tolerance	0~+5 W														
Module efficiency	21.90%			22.11%			22.32%			22.53%			22.74%		

Mechanical Characteristics

Cell type	Monocrystalline (182x91 mm)
Number of cells	132 (6x22)
Dimensions	2094x1134x30mm
Weight	30.3 kg
Glass	2.0mm (front) / 2.0mm (rear), tempered glass, AR coated
Frame	Anodized aluminium alloy
Junction box	IP68 rated (3 by pass diodes)
Cable	4.0 mm², 300 mm (+)/ 300 mm (-): Length can be customized
Connector	MC4, MC4-EVO2 compatible

Operating Condition

Operating temperature range	-40°C~+85°C
Max system voltage (IEC)	1500 VDC
Max series fuse rating	30 A
Max front load (e.g.: snow)	5400 Pa
Max back load (e.g.: wind)	2400 Pa

Packaging (Dimensions of pallet: 2124*1125*1259mm)

Type	Quantity	Weight
Per Pallet	36 pcs	1124.8 kg
40ft HQ Container	792 pcs	24.75 t

Engineering Drawings

