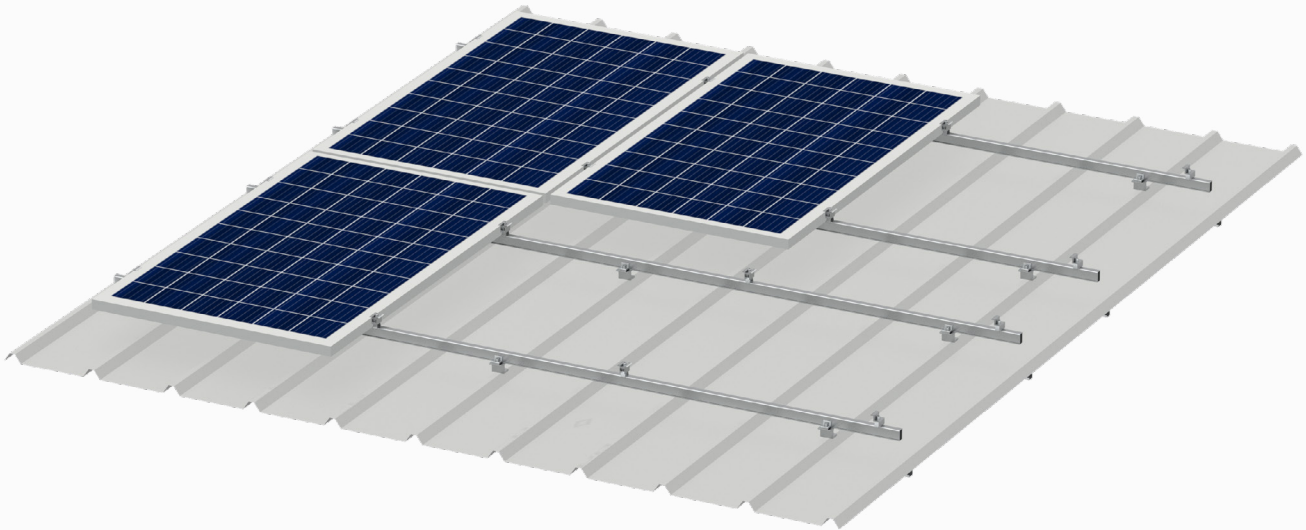




SolarRoof™ Aeri Rail Solution

Robust Solution for PV Installation on Pitched Roofs



SolarRoof™ Aeri Rail Solution

PV-ezRack® SolarRoof™ Aeri Rail Solution is a universal solution designed for PV-module installation on tin roof. Thanks to our Interfaces, Rails and Clamps with unique sectional property, PV-ezRack® SolarRoof™ Aeri Rail Solution could offer robust structure and long lifecycle. Available with penetrative and non-penetrative solution on a large variety of roof types.

Main Benefits

Quick and Easy Installation

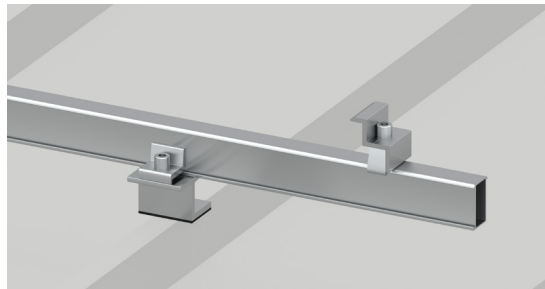
Innovative Aeri Omega Mouldle is used in this solution. It provide easy and safe installation method. And can be clicked into the rail at any given point, and secured with just two or three hand grips.

Versatility

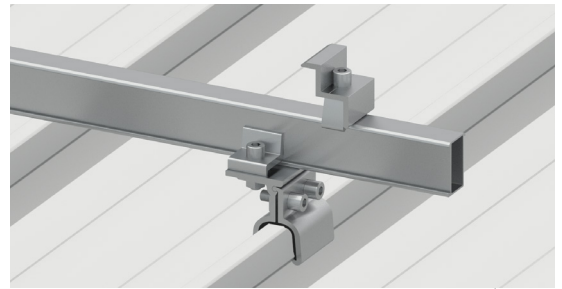
With various types of Interfaces and non-penetrative clamps, PV-ezRack® SolarRoof™ Aeri Rail Solution could be compatible with common tin roofs and PV-modules over the market. In the growing range of clamps, cable clips, adapters and accessories you are sure to find the parts you require for your rooftop mounting needs.

Technical Details

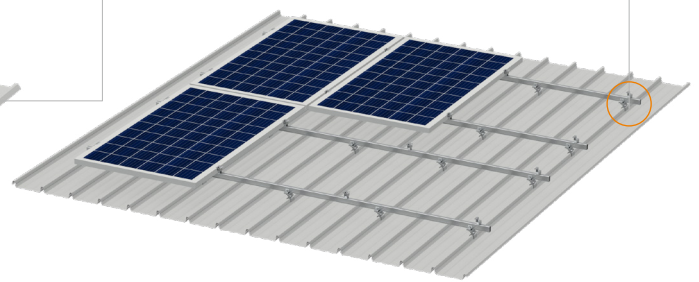
Module Orientation	Landscape or Portrait
Module Type	Framed Frameless
Wind Load	Customized
Roof Type	Tin Roof
Tilt Angle	0°, parallel to roof surface
Material	Main Structure: AL6005-T5 Fasteners: SUS 304
Standard	ASCE 7-10 AS NZS1170.2-2011 EN1991 JISC8955-2017
Warranty	12 Years

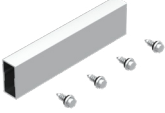



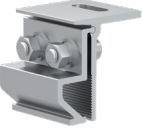




Penetrative



Non-penetrative



				
<p>ER-R-AE/XXXX Aeri Rail</p>	<p>ER-SP-AE Splice for Aeri Rail</p>	<p>ER-RC-AE Rail Clamp for Aeri Rail</p>	<p>ER-IC-AE Inter Clamp</p>	<p>ER-EC-AE End Clamp</p>
				
<p>ER-I-05/DU Dual Tin Interface</p>	<p>ER-I-31/SH Klip-lok Interface 400-700HS</p>	<p>ER-I-32/SH Klip-lok Interface 406</p>	<p>ER-I-43 Klip-lok Interface for Angularity 25</p>	<p>ER-I-44 Klip-lok Interface for standing seam 8</p>
				
<p>ER-I-45 Klip-lok Interface for standing seam 20</p>	<p>ER-I-46 Klip-lok Interface for Angularity 18</p>	<p>ER-I-47/SH Klip-lok Interface for Angularity 18</p>		



PV-ezRACK®

Clenergy

999-1009 Min'an Rd,
Huoju Hi-tech Ind. Dev. Zone
Xiang'an District 361101, Xiamen,
Fujian, China

Phone: +86 592 311 0088
Email: sales_em@clenergy.com
Web: www.clenergy.com

 @ClenergyGlobal @ClenergyClub @ClenergyAUS @ClenergyThailand

 @Clenergy_global  @Clenergy  @Clenergy  @ClenergyClub

A Clenergy Technologies Company

