







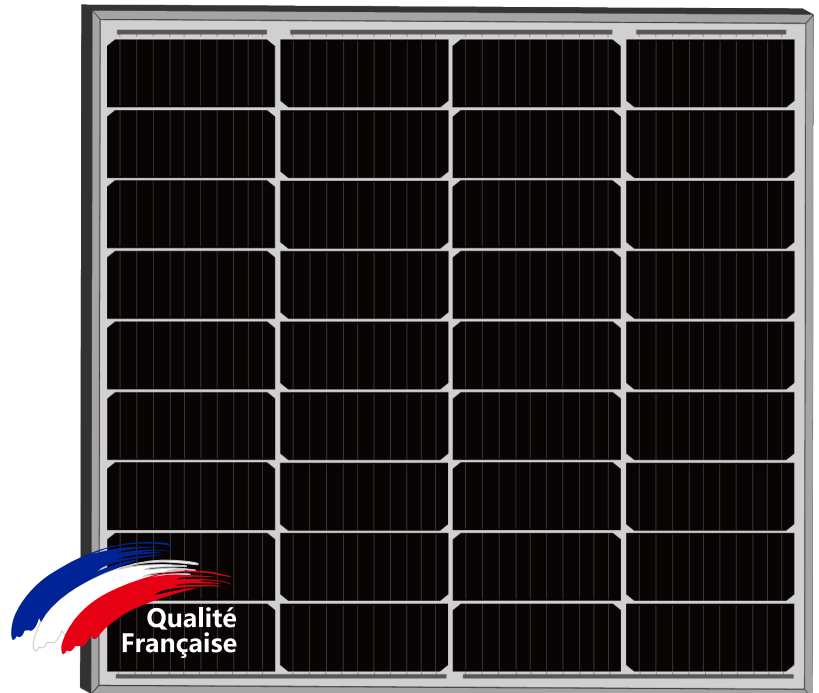
Off-Grid

100W

M10 / 182mm Cell - 36 Cut cells

KEY FEATURES

-  Outstanding Power Generation
-  Anti PID/ Low LID protection
-  Lower temperature coefficient
-  Less Hot Spot Shading effects



17.79%
Maximum Efficiency

0~±3%
Positive Power Tolerance

100W
Maximum Power Output

GRADE A
Cells Guaranteed

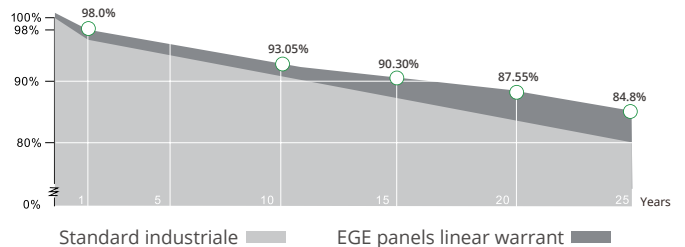
COMPREHENSIVE CERTIFICATES

IEC 61215/ IEC 61730 / IEC 61701 / IEC 62716
ISO 9001 : Quality Management Systems



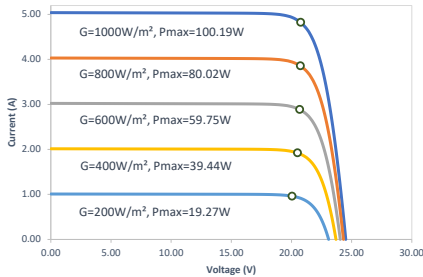
LINEAR PERFORMANCE WARRANTY

12 Year Product Warranty
25 Year Linear Power Warranty

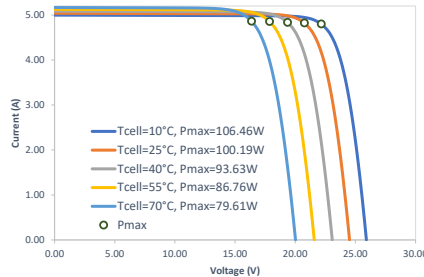


Characteristics

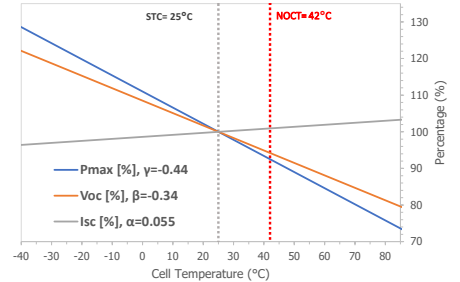
IV-Curves Irradiance



IV-Curves Temperature



Temperature Dependence of Isc, Voc, Pmax



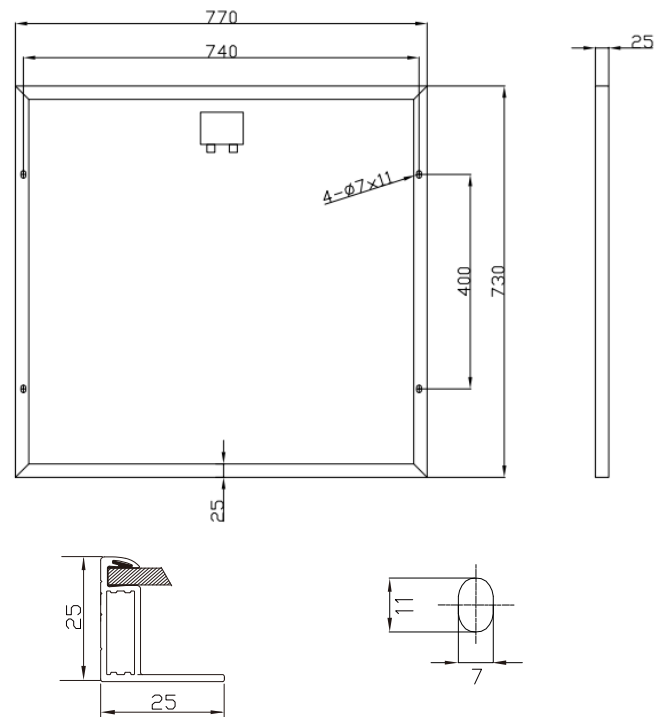
Electrical Characteristics (STC: E=1000W/m² - Tcell=25°C - AM1.5 NOCT: E=800W/m² - T=20°C - v=1m/s)

Module Type	EGE 100W 36M(M10)	
	STC	NOCT
Power output (Pmax)	100 W	73.80 W
Maximum power voltage (Vmp)	21.06 V	19.20 V
Maximum power current (Imp)	4.75 A	3.85 A
Open circuit voltage (Voc)	24.52 V	22.60 V
Short circuit current (Isc)	5.04 A	4.07 A
Power tolerance	0 ~ ± 3%	
Module efficiency	17.79 %	

Mechanical Characteristics

Cell type	Monocrystalline (182x72.8 mm)
Number of cells	36 (4x9)
Dimensions	770x730x25mm (1.5mm Cell Gap)
Weight	5.7 kg
Glass	3.2mm, tempered glass, AR coated
Frame	Anodized aluminium alloy
Junction box	IP65 rated, 3 bypass diodes
Cable	4.0 mm ² , 900 mm (+) / 900 mm (-): Length can be customized
Connector	MC4, MC4-EVO2 compatible

Engineering Drawings



Operating Condition

Operating temperature range	-40°C ~ +85°C
Max system voltage (IEC)	1000 VDC
Max series fuse rating	10 A
Max front load (e.g.: snow)	5400 Pa
Max back load (e.g.: wind)	2400 Pa

Packaging (Dimensions of pallet: 750*790*65mm)

Type	Quantity	Weight
Per Pallet	2 pcs	11.4 kg
40ft HQ Container	3360 pcs	19.152 t

