



EcoGreenEnergy

EGE-615-635W-156N(M10)

TOPCon

615-635W

M10 / 182mm Cell - 156 Half-cells

KEY FEATURES



Outstanding Power Generation



Anti PID/ Low LID protection



Lower temperature coefficient



Less Hot Spot Shading effects

22.73%

Maximum Efficiency

0~+5W

Positive Power Tolerance

635W

Maximum Power Output

GRADE A

Cells Guaranteed



COMPREHENSIVE CERTIFICATES

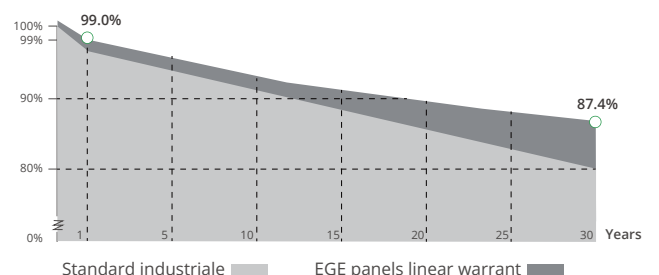
IEC 61215/ IEC 61730 / IEC 61701 / IEC 62716
ISO 9001 : Quality Management Systems



LINEAR PERFORMANCE WARRANTY

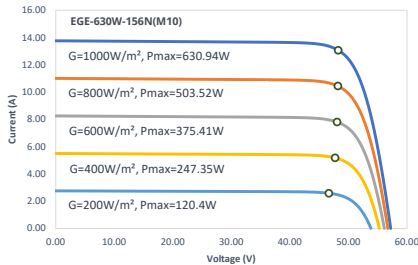
15 Year Product Warranty

30 Year Linear Power Warranty

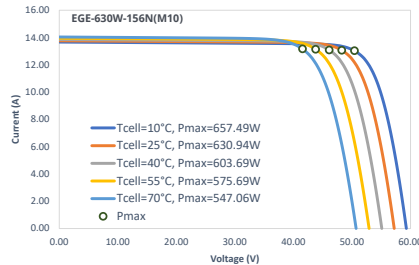


Characteristics

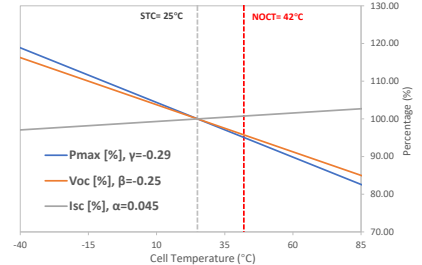
IV-Curves Irradiance



IV-Curves Temperature



Temperature Dependence of Isc, Voc, Pmax



Electrical Characteristics (STC: E=1000W/m² - Tcell=25°C - AM1.5 NOCT: E=800W/m² - T=20°C - v=1m/s)

Module Type	EGE-615W-156N(M10)		EGE-620W-156N(M10)		EGE-625W-156N(M10)		EGE-630W-156N(M10)		EGE-635W-156N(M10)	
	STC	NOCT	STC	NOCT	STC	NOCT	STC	NOCT	STC	NOCT
Power output (Pmax)	615 W	463 W	620 W	467 W	625 W	471 W	630 W	475 W	635 W	479 W
Maximum power voltage (Vmp)	47.58 V	43.85 V	47.89 V	44.00 V	48.13 V	44.14 V	48.28 V	44.29 V	48.52 V	44.43 V
Maximum power current (Imp)	12.94 A	10.57 A	12.96 A	10.62 A	13.00 A	10.67 A	13.07 A	10.72 A	13.11 A	10.77 A
Open circuit voltage (Voc)	54.44 V	42.75 V	54.68 V	42.86 V	54.99 V	42.98 V	55.30 V	43.09 V	55.54 V	43.21 V
Short circuit current (Isc)	13.71 A	11.14 A	13.73 A	11.19 A	13.75 A	11.24 A	13.76 A	11.28 A	13.79 A	11.33 A
Power tolerance	0~+5 W									
Module efficiency	22.01 %		22.19 %		22.37 %		22.55 %		22.73 %	

Mechanical Characteristics

Cell type	Monocrystalline (182x91 mm)
Number of cells	156 (6x26)
Dimensions	2465x1134x35mm
Weight	31.4 kg
Glass	3.2mm, tempered glass, AR coated
Frame	Anodized aluminium alloy
Junction box	IP68 rated, 3 bypass diodes
Cable	4.0 mm², 300 mm (+)/ 300 mm (-): Length can be customized
Connector	MC4, MC4-EVO2 compatible

Operating Condition

Operating temperature range	-40°C~+85°C
Max system voltage (IEC)	1500 VDC
Max series fuse rating	30 A
Max front load (e.g.: snow)	5400 Pa
Max back load (e.g.: wind)	2400 Pa

Packaging (Dimensions of pallet: 2500*1125*1259mm)

Type	Quantity	Weight
Per Pallet	31 pcs	1007.4 kg
40ft HQ Container	558 pcs	18.13 t

Engineering Drawings

