



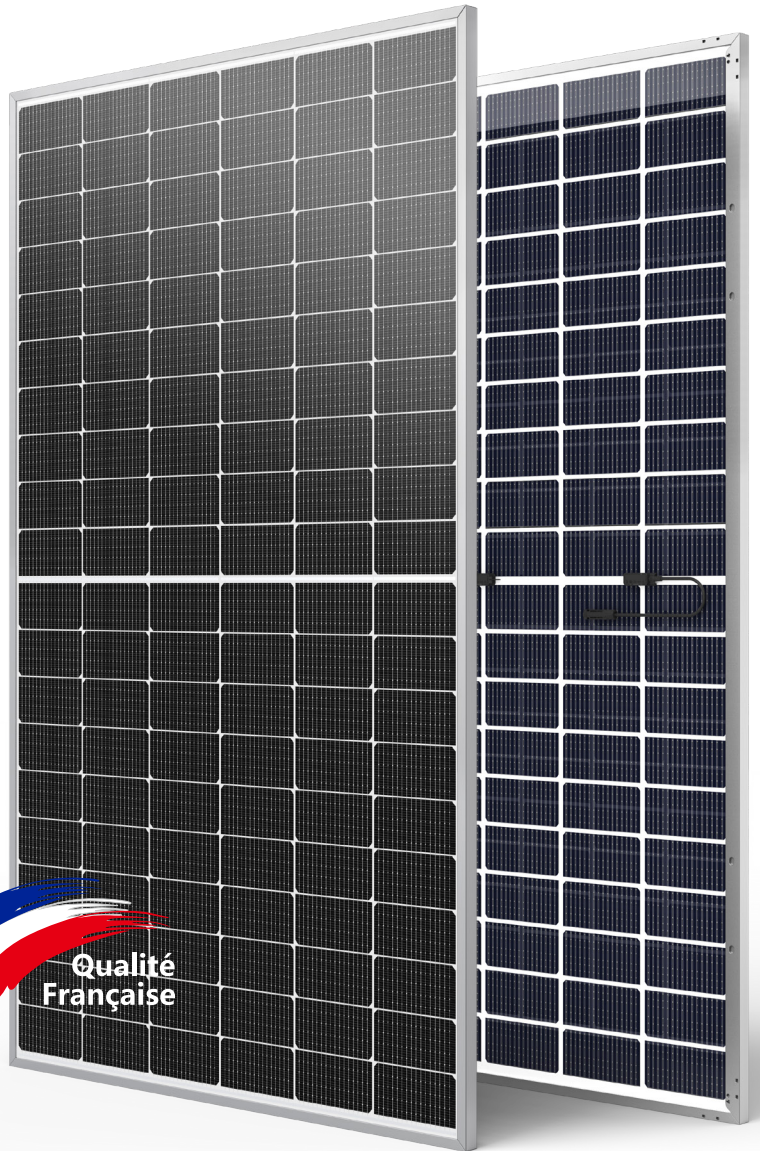
TOPCon

470-490W

M10 / 182mm Cell - 120Half-cells

KEY FEATURES

- Outstanding Power Generation
- Anti PID/ Low LID protection
- Lower temperature coefficient
- Less Hot Spot Shading effects
- Enhanced Bifaciality Factor
- Exceptional Mechanical Resistance



22.62%
Maximum Efficiency

0~+5W
Positive Power Tolerance

490W
Maximum Power Output

GRADE A
Cells Guaranteed

COMPREHENSIVE CERTIFICATES

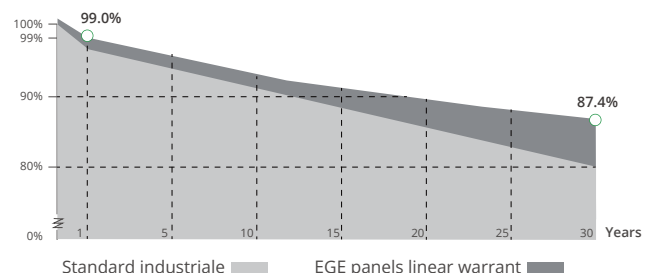
IEC 61215/ IEC 61730 / IEC 61701 / IEC 62716
ISO 9001 : Quality Management Systems



LINEAR PERFORMANCE WARRANTY

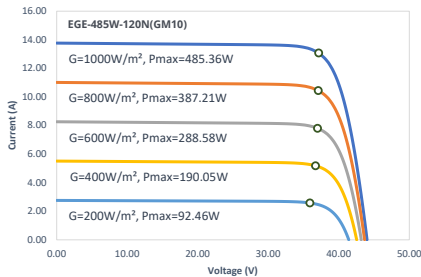
20 Year Product Warranty

30 Year Linear Power Warranty

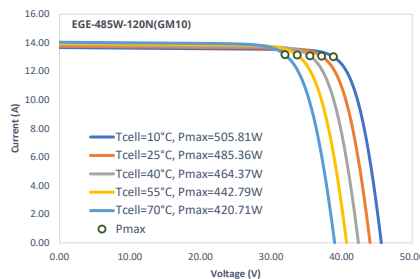


Characteristics

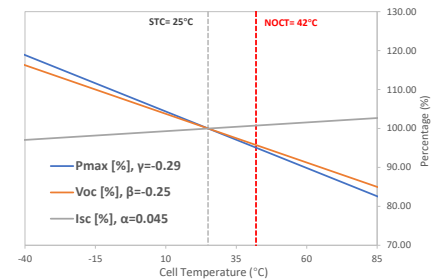
IV-Curves Irradiance



IV-Curves Temperature



Temperature Dependence of Isc, Voc, Pmax



Electrical Characteristics (STC: AM1.5 1000W/m² 25°C NOCT: AM1.5 800W/m² 20°C 1m/s)

Module Type	EGE-470W-120N(GM10)			EGE-475-120N(GM10)			EGE-480W-120N(GM10)			EGE-485W-120N(GM10)			EGE-490W-120N(GM10)		
	STC	NOCT	BIFi30	STC	NOCT	BIFi30	STC	NOCT	BIFi30	STC	NOCT	BIFi30	STC	NOCT	BIFi30
Power output (Pmax)	470 W	353 W	582.8 W	475 W	357 W	589.0 W	480 W	361 W	595.2 W	485 W	365 W	601.4 W	490 W	369 W	607.6 W
Maximum power voltage (Vmp)	36.48 V	33.21 V	36.48 V	36.72 V	33.40 V	36.72 V	37.02 V	33.61 V	37.02 V	37.14 V	33.84 V	37.14 V	37.83 V	34.00 V	37.83 V
Maximum power current (Imp)	12.93 A	10.63 A	15.98 A	12.95 A	10.69 A	16.04 A	13.00 A	10.74 A	16.08 A	13.07 A	10.80 A	16.19 A	12.97 A	10.86 A	16.06 A
Open circuit voltage (Voc)	41.82 V	41.14 V	41.82 V	41.94 V	41.28 V	41.94 V	42.30 V	41.42 V	42.30 V	42.54 V	41.57 V	42.54 V	42.98 V	41.71 V	42.98 V
Short circuit current (Isc)	13.69 A	11.05 A	16.92 A	13.73 A	11.12 A	17.01 A	13.75 A	11.18 A	17.01 A	13.76 A	11.24 A	17.05 A	13.66 A	11.31 A	16.92 A
Bifaciality Factor	80% ± 10%														
Power tolerance	0~+5 W														
Module efficiency	21.70 %			21.93 %			22.16 %			22.39 %			22.62 %		

Mechanical Characteristics

Cell type	Monocrystalline (182x91 mm)
Number of cells	120 (6x20)
Dimensions	1910x1134x30mm
Weight	27.5 kg
Glass	2.0mm (front) / 2.0mm (rear), tempered glass, AR coated
Frame	Anodized aluminium alloy
Junction box	IP68 rated (3 by pass diodes)
Cable	4.0 mm², 300 mm (+)/ 300 mm (-): Length can be customized
Connector	MC4, MC4-EVO2 compatible

Operating Condition

Operating temperature range	-40°C~+85°C
Max system voltage (IEC)	1500 VDC
Max series fuse rating	30 A
Max front load (e.g.: snow)	5400 Pa
Max back load (e.g.: wind)	2400 Pa

Packaging (Dimensions of pallet: 1930*1125*1259mm)

Type	Quantity	Weight
Per Pallet	36 pcs	1024 kg
40ft HQ Container	864 pcs	24.58 t

Engineering Drawings

