



ATLAS

440-465W

M10 / 182mm Cell - 120 Half-cells

KEY FEATURES

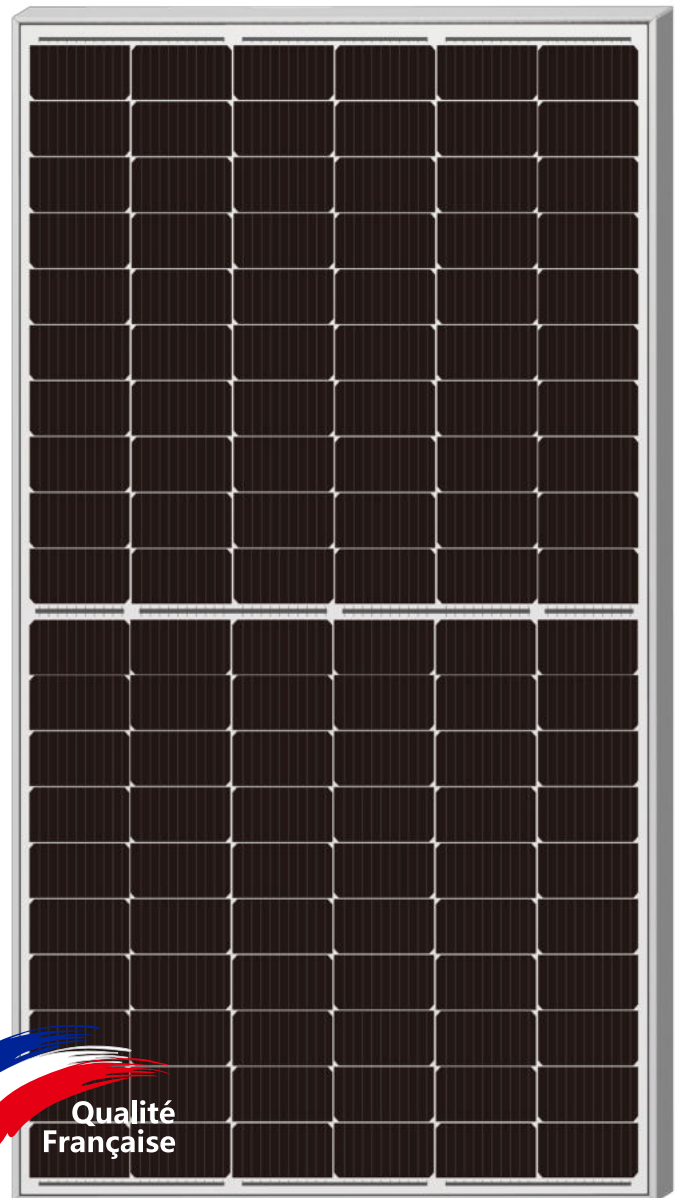
- Outstanding Power Generation
- Anti PID/ Low LID protection
- Lower temperature coefficient
- Less Hot Spot Shading effects

21.47%
Maximum Efficiency

0~+5W
Positive Power Tolerance

465W
Maximum Power Output

GRADE A
Cells Guaranteed



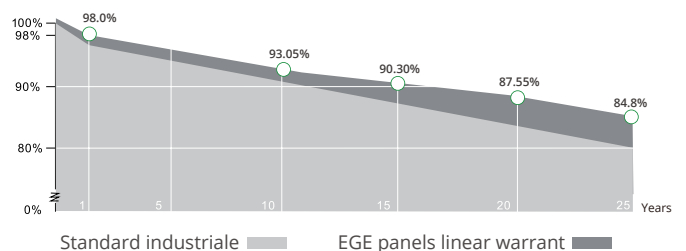
COMPREHENSIVE CERTIFICATES

IEC 61215 / 61730 / 62716 / 61701 / 60068-2-68
ISO 9001 / 14001 / 45001



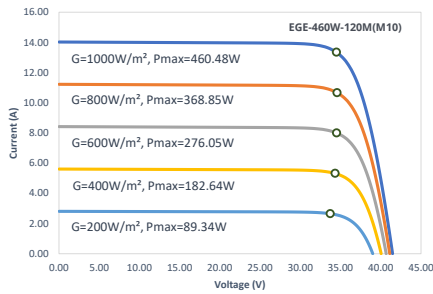
LINEAR PERFORMANCE WARRANTY

12 Year Product Warranty
25 Year Linear Power Warranty

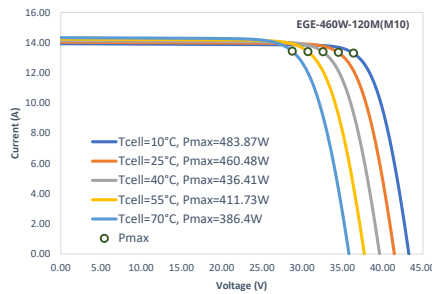


Characteristics

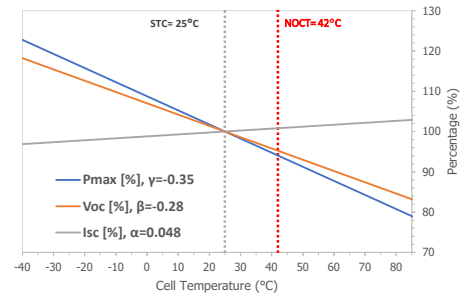
IV-Curves Irradiance



IV-Curves Temperature



Temperature Dependence of Isc, Voc, Pmax



Electrical Characteristics (STC: E=1000W/m² - Tcell=25°C - AM1.5 NOCT: E=800W/m² - T=20°C - v=1m/s)

Module Type	EGE-440W-120M(M10)		EGE-445W-120M(M10)		EGE-450W-120M(M10)		EGE-455W-120M(M10)		EGE-460W-120M(M10)		EGE-465W-120M(M10)	
	STC	NOCT	STC	NOCT	STC	NOCT	STC	NOCT	STC	NOCT	STC	NOCT
Power output (Pmax)	440 W	332.00 W	445 W	335.60 W	450 W	339.40 W	455 W	343.20 W	460 W	346.90 W	465 W	350.70 W
Maximum power voltage (Vmp)	33.64 V	31.90 V	33.79 V	32.00 V	33.94 V	32.10 V	34.08 V	32.30 V	34.23 V	32.40 V	34.37 V	32.50 V
Maximum power current (Imp)	13.08 A	10.41 A	13.17 A	10.49 A	13.26 A	10.56 A	13.35 A	10.63 A	13.44 A	10.71 A	13.53 A	10.78 A
Open circuit voltage (Voc)	40.88 V	38.50 V	41.02 V	38.60 V	41.17 V	38.70 V	41.31 V	38.90 V	41.45 V	39.00 V	41.60 V	39.10 V
Short circuit current (Isc)	13.67 A	11.03 A	13.76 A	11.10 A	13.85 A	11.17 A	13.94 A	11.24 A	14.03 A	11.32 A	14.12 A	11.39 A
Power tolerance	0~+5 W											
Module efficiency	20.31 %		20.55 %		20.78 %		21.01 %		21.24 %		21.47 %	

Mechanical Characteristics

Cell type	Monocrystalline (182x91 mm)
Number of cells	120 (6x20)
Dimensions	1910x1134x30mm (1.5mm Cell Gap)
Weight	24.2 kg
Glass	3.2mm, tempered glass, AR coated
Frame	Anodized aluminium alloy
Junction box	IP68 rated, 3 bypass diodes
Cable	4.0 mm ² , 300 mm (+)/ 300 mm (-): Length can be customized
Connector	MC4, MC4-EVO2 compatible

Operating Condition

Operating temperature range	-40°C~+85°C
Max system voltage (IEC)	1500 VDC
Max series fuse rating	30 A
Max front load (e.g.: snow)	5400 Pa
Max back load (e.g.: wind)	2400 Pa

Packaging (Dimensions of pallet: 1930*1125*1259mm)

Type	Quantity	Weight
Per Pallet	36 pcs	905.2 kg
40ft HQ Container	864 pcs	21.72 t

Engineering Drawings

