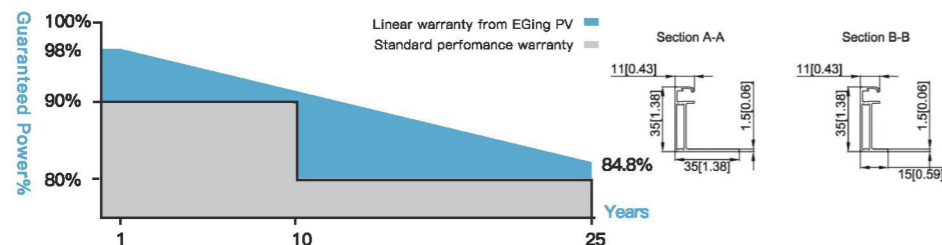
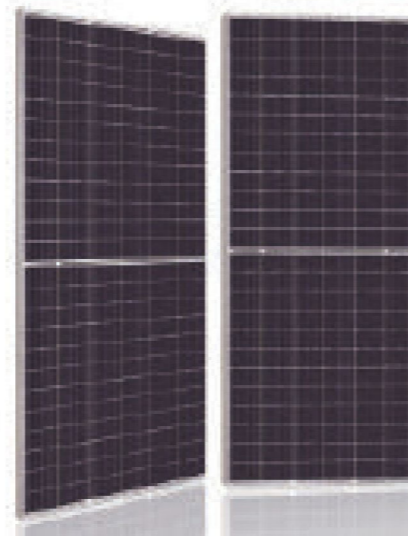


PRODUCT INTRO

AfMc Series (Transparency)

MONO CRYSTALLINE SOLAR MODULE

530W~550W



QUALITY GUARANTEED

- ① Linear output power guaranteed
- ② 10 years product warranty
- ③ 25 years linear power output





High Efficiency

Advanced solar cell technology ensures the high module efficiency up to 21.3%.



Positive Power Selection

Module will generate power selection of 0 to +5W.




Strong Load Capacity

Module is capable to withstand 2400Pa wind loads and 5400Pa Snow loads.



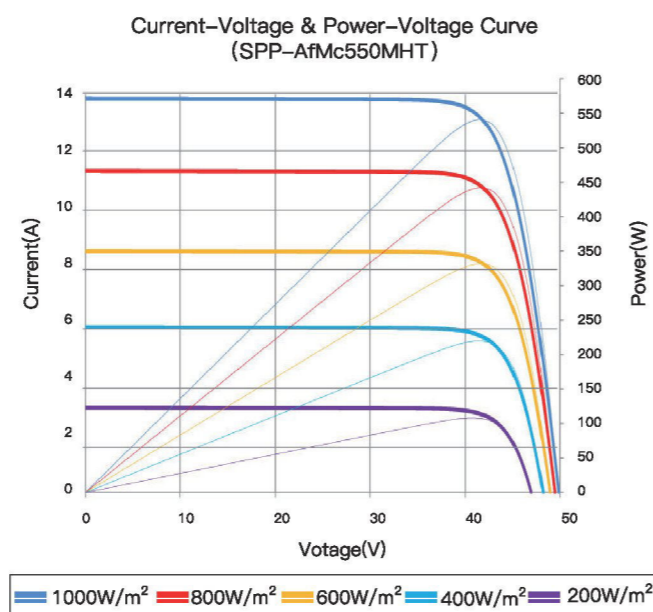
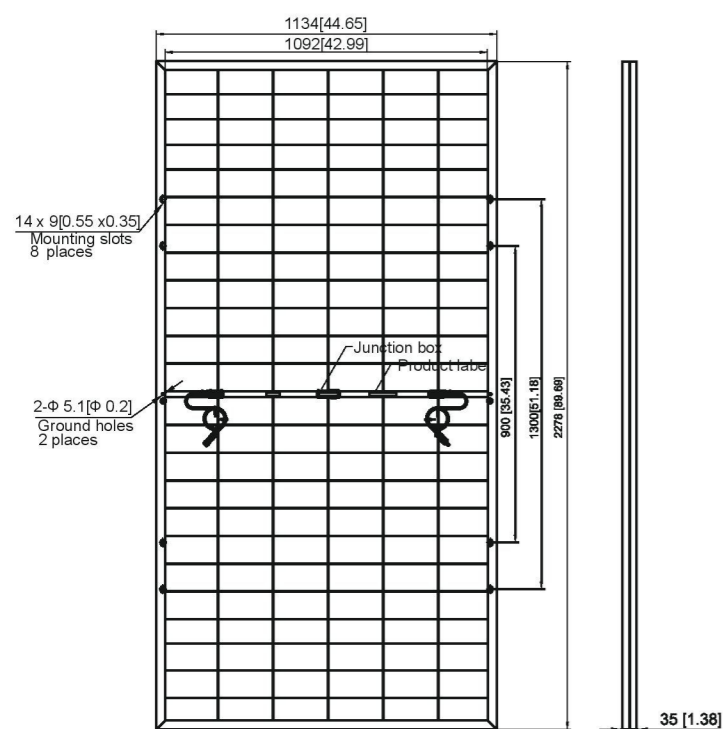
Reliable quality

Module is manufactured in accordance with international quality standards ISO9001



Higher Weatherproof Rating

J-Box performs module with an environmental protection rating to IP68.



◆ ELECTRICAL CHARACTERISTICS

Models	SPP-AfMc530MHT	SPP-AfMc535MHT	SPP-AfMc540MHT	SPP-AfMc545MHT	SPP-AfMc550MHT
Maximum Power (Pmax)	530W	535W	540W	545W	550W
Positive Power Selection	0/+5W	0/+5W	0/+5W	0/+5W	0/+5W
Maximum Power Voltage (Vmp)	41.35V	41.5V	41.65V	41.8V	41.95V
Maximum Power Current (Imp)	12.82A	12.9A	12.97A	13.04A	13.11A
Open Circuit Voltage (Voc)	49.2V	49.35V	49.5V	49.65V	49.8V
Short Circuit Current (Isc)	13.71A	13.78A	13.85A	13.92A	13.99A
Module Efficiency	20.5%	20.7%	20.9%	21.1%	21.3%
Operating module Temperature	- 40°C ~ +85°C				
Maximum system(DC) Voltage	DC1500V(IEC)				
Maximum Series Fuse Rating	30A				
NOCT*	42±2°C				
Temperature Coefficients of Pmax	- 0.36%/°C				
Temperature Coefficients of Voc	- 0.304%/°C				
Temperature Coefficients of Isc	+ 0.050%/°C				

◆ MECHANICAL CHARACTERISTICS

Solar Cell	Mono 182×91mm 10BB
Number of cells	144(6×24)
Dimensions	2278×1134×35mm (89.69×44.65×1.38 inches)
Weight	27.2Kg (59.97 lbs)
Front Glass	3.2mm (0.13 inches) front glass
Back board	Transparency/Transparent white mesh / Transparent black mesh
Frame	Anodized aluminum alloy Silver/Black
Junction Box	IP68 rated
Cable	4mm ² solar cable 300mm (11.81 inches) Customized Length
Connector	EVO2 / compatible
Double-sided factor	70±5%

◆ PACKING

	40HC
Pieces per pallet	31
Pallets per container	20
Pieces per container	620

STC: irradiance 1000 W/m², module temperature 25°C, AM=1.5; Tolerance of Pmax is within +/- 3%.

E-mail: info@sunpacificpower.com website: www.sunpacificpower.com

