



GC-156M 182

580-600 Watt HALF-CELL MONO PERC

 **Multi-bus solar cell**
The special circuit design reduces the hot spot temperature greatly

 **Anti PID** PID resistant
Excellent Pid tolerance at 96 hours (85 ° C/85%)

 **Crack resistance**
Excellent micro-crack resistance, more uniform internal stress

 **The efficiency of the module is 21.46%**
Semi-battery structure with low resistance characteristics has a higher lifetime power generation capacity

 **-0.24% C temperature coefficient**
The power generation performance of the module is more stable, and the electrical performance is better under the high temperature environment

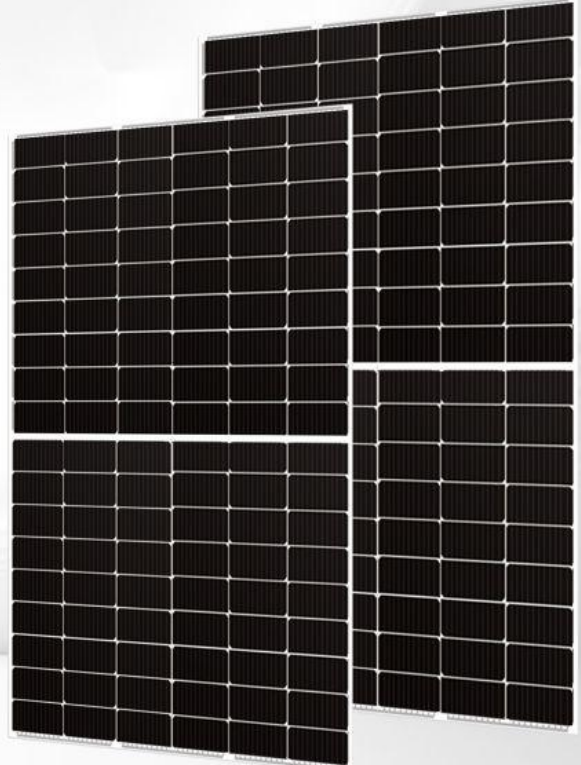
 **SMBB technology**
Shorter current transfer distance, less resistance loss, higher battery efficiency

 **Maximum 90% two-sided rate**
Natural double-sided symmetrical structure, the module back-side power generation gain is higher

 **Butyl rubber seal**
Stronger water resistance, better air tightness, longer service life of components

 **Higher reliability**
Industry-leading process and power quality assurance to ensure long-term high-performance components

 **Applicable to centralized power stations**
Effectively reduce system BOS cost, LCOE lower



认证证书

- EC61215、IEC61730、CE、CQC
- 1S08001:2015 Quality Management System
- 18014001:2015 Environmental Management System
- 1S045001:2018 Occupational Health and safety management



Electrical specifications

Module type	GC-156M-580		GC-156M-585		GC-156M-590		GC-156M-595		GC-156M-600	
Test conditions	STC	NOCT	STC	NOCT	STC	NOCT	STC	NOCT	STC	NOCT
Maximum power(Pmax)	580	441	585	445	590	449	595	453	600	457
Open-circuit voltage(Voc)	53.62	49.47	53.75	49.69	53.88	49.91	54.00	50.13	54.12	50.35
Short Circuit Current(Isc/A)	13.66	11.31	13.73	11.35	13.80	11.39	13.87	11.43	13.94	11.47
Maximum power voltage(Vmpp)	45.45	41.25	45.60	41.47	45.74	41.69	45.88	41.91	46.01	42.12
Current maximum power	12.76	10.69	12.83	10.73	12.90	10.77	12.97	10.81	13.04	10.85
Module efficiency(%)	20.75%		20.93%		21.11%		21.29%		21.46%	
Power tolerance(W)	0~+5									

STC: light intensity 1000W/m, battery temperature 25°C, air quality 5.
 Test conditions: irradiance 800W/m, ambient temperature 20°C, wind speed 1m/s.

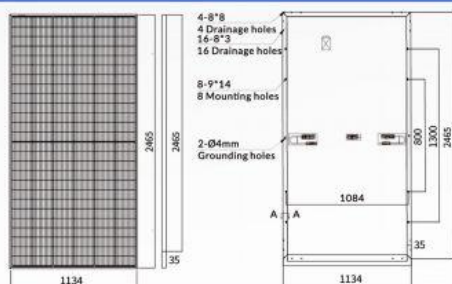
Mechanical specifications

Battery type	MONO
Number of cells	156(6*26)
Size	2465*1134*35mm
Weight	30.0k
Glass	3.2 mm low toughened glass
Framework	Anodic aluminum oxide alloy
Junction Box	IP683 diodes
Output Cable	4mm ² length 300mm or custom made
The connector type	MC4 compatible

Packaging configuration

Per Pallet	31pcs
Per 40'HQ Container	558 pcs

Engineering drawings



Temperature characteristics

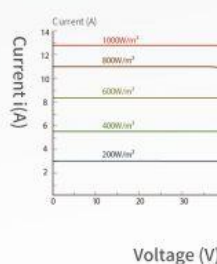
NOCT temperature	45°C±2°C
Temperature coefficient (P _{MAX})	-0.360%/°C
Temperature coefficient (V _{OC})	-0.280%/°C
Temperature coefficient (I _{SC})	0.050%/°C

Maximum rated parameters

Maximum system voltage (IEC)	1500VDC(IEC)
Snow/wind	5400Pa/2400Pa
Operating temperature	-40°C~+85°C
Maximum series fuse rating	25A

L-V curve

I-V CURVE(590W)



Current-Voltage curves (590W)

