

Black Slate - 320W

High Efficiency Mono Colored PV Module

- **North American Manufacturer**

Mitrex is a world-leading manufacturer of standard solar and BIPV products based in Canada. With over 20 years of experience, Mitrex guarantees high-quality, fully-automated manufacturing and continuous innovation in solar technology.

- **Quality, Durability And Performance**

Mitrex panels are engineered with the highest quality- featuring wide-ranging compatibility with racking and electrical components, advanced cell technology, ability to withstand high snow/wind load conditions, and high performing modules.

- **25-Year Product And Performance Warranty**

Made in North America, all our products come with an industry leading 25-year warranty for products and performance, ensuring the quality of the hardware, energy generation, and aesthetics are maintained.

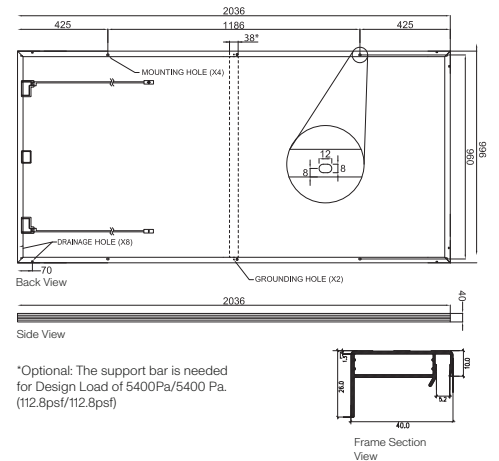


● Electrical Specifications

Test Conditions	STC
Module Power (Pmax)	320W
Maximum Power Voltage (Vpmax)	41.7V
Maximum Power Current (Ipmax)	7.67A
Open Circuit Voltage (Voc)	48.2V
Short Circuit Current (Isc)	8.42A
Module Efficiency	15.8%
Maximum System Voltage (VDC)	1000V (IEC/UL)
Series Fuse Rating	20A
Power & Other Electrical Specification Tolerance	5%
Application Classification	Class A

Measurement Conditions: STC 1000 W/m² - AM 1.5 - Temperature 25°C

● Engineering Drawing



● Mechanical Properties

● Metric

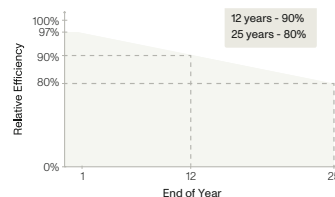
● Imperial

Module Weight	22 kg	48.5 lbs
Dimensions (H x L x D)	2036 × 996 × 40mm	80.2 × 39.2 × 1.6in
Design Load	5400Pa front load / 5400Pa rear load or 5400Pa front load / 2400Pa rear load*	112.8psf front load / 112.8psf rear load or 112.8psf front load / 50.1psf rear load*
Hail Impact Resistance	ø 25mm at 83 km/h	ø 1in at 51.6 mph
Cells	72 [12×6] Mono-crystalline (158.75 × 158.75mm)	72 [12×6] Mono-crystalline (6.25 × 6.25in)
Glass	3.2mm tempered glass, high transmittance, anti-reflective coating	0.126in tempered glass, high transmittance, anti-reflective coating
Cables & Connectors (Refer to Installation Manual)	300mm, 1000mm, 1200mm - 4mm ² , 12 AWG (UL) MC4 from Staubli	11.8in, 39.4in, 47.2in - 0.16in ² , 12 AWG (UL) MC4 from Staubli
Pattern Orientation	Landscape & Portrait	
Backsheet	High durability, UV resistant, PV backsheet	
Frame	Anodized aluminum alloy black frame	
Bypass Diodes	3 diodes- 30SQ045T (45V max DC blocking voltage, 30A max forward rectified current)	
Junction Box	IP68 rated, TUV and UL certified	
Fire Rating	Type II	

● Temperature Ratings

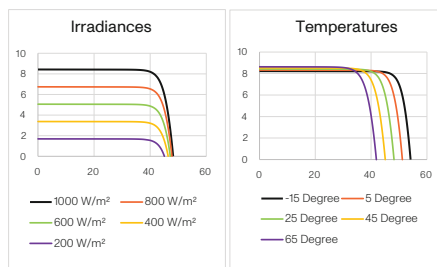
Temperature Coefficient Isc	0.036% /°C
Temperature Coefficient Voc	-0.27% /°C
Temperature Coefficient Pmax	-0.36% /°C
Nominal Module Operating Temperature	45 ± 3°C
Operating Temperature	-40°C ~ +85°C

● Warranty



Product Material Warranty: 25 years
 Performance Warranty: 25 years
 ≥ 97% end of 1st year
 ≥ 90% end of 12th year
 ≥ 80% end of 25th year

● I-V Curves



● Shipping

Modules Per Pallet	25
Pallets Per Truck	28
Modules Per Truck	700

● Certifications

- UL 61730-1/-2, CSA C22.2 #61730-1/-2, IEC 61730-1/-2, CEC Listed

Datasheet is subjected to change without prior notice, always obtain the most recent version of the datasheet. **Caution:** For professional use only, the installation, handling, and cleaning of PV modules should only be performed by qualified professionals. Read the Installation Manual for mounting specifications before handling, installing and operating modules.