

# Plane PV Tile



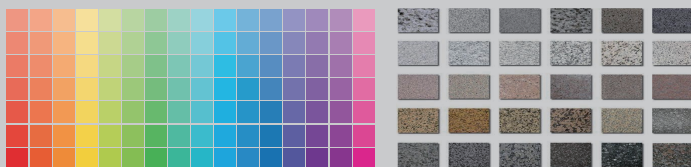
Modern technology and traditional architecture are perfectly combined, and a variety of colors are available. Can provide integrated solar power roof design, the whole system solution. Can be widely used in high-end villas, club venues, public building roof.

## Product Characteristics

- ◆ The standard size of the product is  $1528 \times 432 \times 37$ mm, matching the building module, which is more conducive to the early architectural design and later construction;
- ◆ Module power up to 105W, component conversion efficiency 16%;
- ◆ Three side frame design, no ash accumulation problem;
- ◆ Weight 8.5kg, can be installed by one person;
- ◆ Instead of traditional cement and clay tiles, the weight is half of traditional tiles, and the strength is several times that of ordinary tiles;
- ◆ Can achieve a single piece of independent disassembly, convenient for later maintenance.

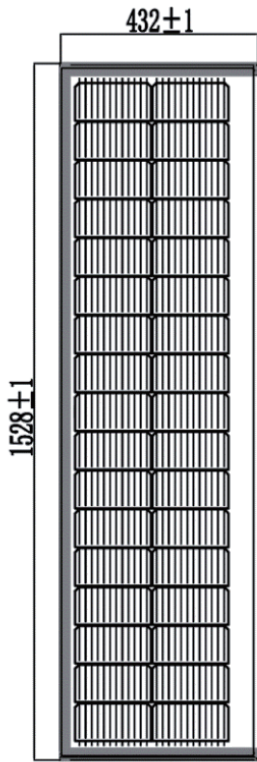
## Standard Color

Colors and patterns can be customized

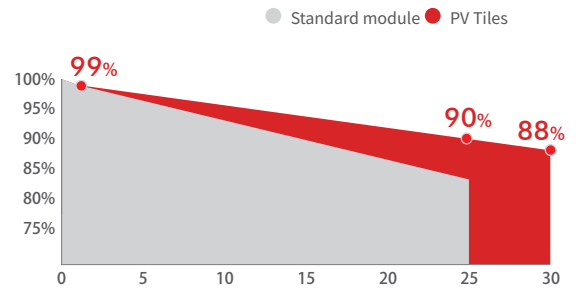


# Plane PV Tile (95-105W)

## 34 half-piece/Double-glass Non-transparent Heterojunction Half-piece Module



Unit: mm



\* For details, please refer to the product warranty instructions.

### Mechanical parameters

Cell type	Single-crystal heterojunction 166×83mm
Cell arrangement	34 (17*2)
Module size	1528*432*37 mm
Module weight	8.5 kg
Junction box	Protection grade IP67/IP68
Output cable	4mm <sup>2</sup> , L: 300 mm (customized) / UV protection
Connector class	MC4 compatible
Frame	N/A
Sealant	PVB
Front static load (snow pressure)	2400 Pa
Back static load (wind pressure)	2400 Pa
Glass	(F) 2.0mm ultra-white heat-strengthened glass (B) 2.0mm heat-strengthened glass

### Electrical parameter (STC\*)

Module type	HL-XWB11 T01095	HL-XWB11 T01100	HL-XWB11 T01105
Maximum power (P <sub>max</sub> )	95W	100W	105W
Module efficiency (%)	15.9%	16.7%	17.6%
Optimum operating voltage (V <sub>mp</sub> )	10.35V	10.62V	10.98V
Optimum operating current (I <sub>mp</sub> )	9.18A	9.42A	9.57A
Open-circuit voltage (V <sub>oc</sub> )	12.58V	12.62V	12.69V
Short-circuit current (I <sub>sc</sub> )	9.65A	9.88A	10.13A
Operating temperature range of modules	-40~+85 °C		
Maximum system voltage	DC1000V (IEC)		
Maximum rated fuse current	20A		
Power tolerance range	0~+5W		

\*STC (standard test condition): irradiance 1000W/m<sup>2</sup>, battery temperature 25 °C, spectrum AM1.5.

### Temperature coefficient

Rated operating temperature of battery (NOCT)	44 C ± 2 C
Maximum power temperature coefficient (P <sub>max</sub> )	-0.26%/ C
Temperature coefficient of open circuit voltage (V <sub>oc</sub> )	-0.24%/ C
Temperature coefficient of short-circuit current (I <sub>sc</sub> )	0.04%/ C

### Safety level & warranty

Safety level	Class II
Product warranty	10-year product materials and processes
Power warranty	30-year linear power output*

\*The attenuation is 1% in the first year, not more than 0.375% annually from the next year, and not less than 88% in the 30th year.

The specifications and key features described in this data sheet may deviate slightly.

Please access the latest version of the specification at any time. The specification shall be formally incorporated into the binding contract signed by both parties.

### Packaging information

Capacity of each case: 24 pieces