



# GC-108M 182

**400-415 Watt** HALF-CELL MONO PERC



**Multi-bus solar cell**  
The special circuit design reduces the hot spot temperature greatly



**PID resistant**  
Excellent Pid tolerance at 96 hours (85 ° C/85%)



**Crack resistance**  
Excellent micro-crack resistance, more uniform internal stress



**The efficiency of the module is 21.30%**  
Semi-battery structure with low resistance characteristics has a higher lifetime power generation capacity



**-0.24% C temperature coefficient**  
The power generation performance of the module is more stable, and the electrical performance is better under the high temperature environment



**SMBB technology**  
Shorter current transfer distance, less resistance loss, higher battery efficiency



**Maximum 90% two-sided rate**  
Natural double-sided symmetrical structure, the module back-side power generation gain is higher



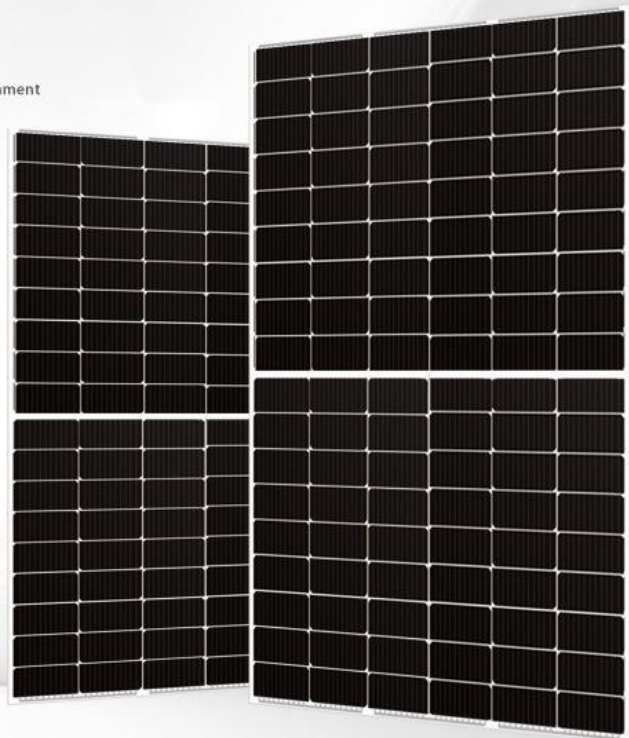
**Butyl rubber seal**  
Stronger water resistance, better air tightness, longer service life of components



**Higher reliability**  
Industry-leading process and power quality assurance to ensure long-term high-performance components



**Applicable to centralized power stations**  
Effectively reduce system BOS cost, LCOE lower



## 认证证书

- EC61215、IEC61730、CE、CQC
- ISO8001:2015 Quality Management System
- 18014001:2015 Environmental Management System
- 1S045001:2018 Occupational Health and safety management



## Electrical specifications

Module type	GC-108M-400		GC-108M-405		GC-108M-410		GC-108M-415	
Test conditions	STC	NOCT	STC	NOCT	STC	NOCT	STC	NOCT
Maximum power(Pmax)	400	299	405	302.7	410	306.5	415	310.2
Open-circuit voltage(Voc)	36.90	34.70	37.15	34.93	37.40	35.17	37.65	35.40
Short Circuit Current(Isc/A)	13.72	11.09	13.78	11.14	13.84	11.19	13.91	11.24
Maximum power voltage(Vmpp)	30.94	28.74	31.18	28.96	31.42	29.19	31.66	29.41
Current maximum power	12.93	10.40	12.99	10.45	13.05	10.50	13.11	10.55
Module efficiency(%)	20.50%		20.70%		21.00%		21.30%	
Power tolerance(W)	0~+5							

STC: light intensity 1000W/m, battery temperature 25°C, air quality 5.  
 Test conditions: irradiance 800W/m, ambient temperature 20°C, wind speed 1m/s.

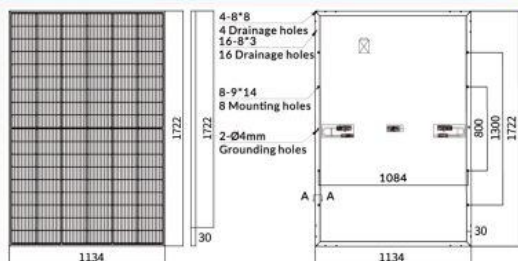
## Mechanical specifications

Battery type	MONO
Number of cells	108(6*18)
Size	1722*1134*30mm
Weight	21.5kg
Glass	3.2 mm low toughened glass
Framework	Anodic aluminum oxide alloy
Junction Box	IP683 diodes
Output Cable	4mm <sup>2</sup> length 300mm or custom made
The connector type	MC4 compatible

## Packaging configuration

Per Pallet	36pcs
Per 40'HQ Container	936 pes

## Engineering drawings



## Temperature characteristics

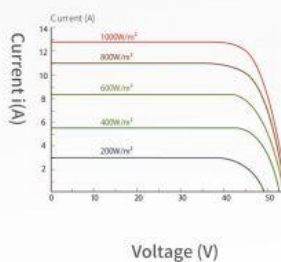
NOCT temperature	44°C±2°C
Temperature coefficient (PMAX)	-0.360%/°C
Temperature coefficient (VOC)	-0.280%/°C
Temperature coefficient (ISC)	0.050%/°C

## Maximum rated parameters

Maximum system voltage (IEC)	1000/1500VDC
Snow/wind	5400Pa/2400Pa
Operating temperature	-40°C~+85°C
Maximum series fuse rating	25A

## L-V curve

I-VCURVE(410W)



Current-Voltage curves (410W)

