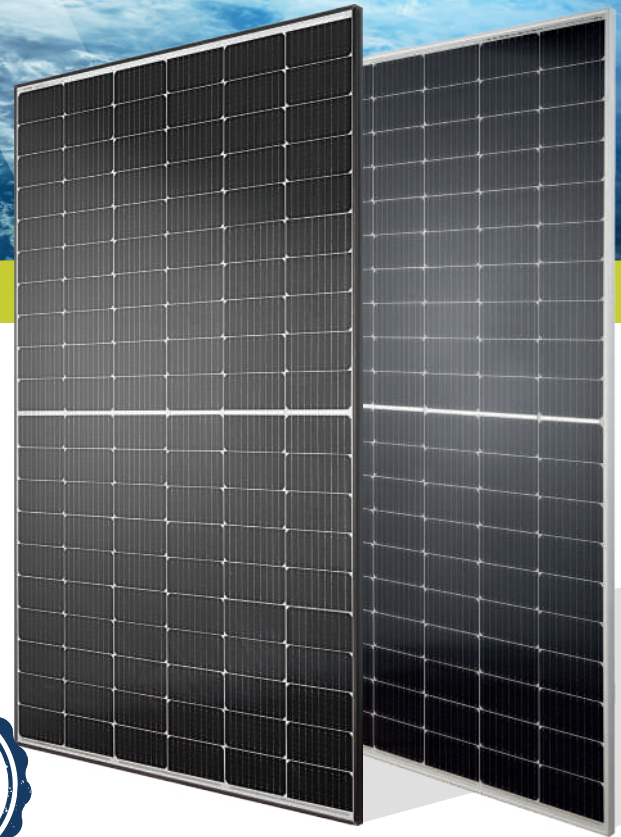


HC MONO
ORION nano-tech layer

400 Watt



KEY FEATURES

Our solar cells offer high conversion efficiency to ensure the highest quality.

Our high performing modules enable cost savings in mounting, cabling and labour of up to 15%.

The modules can withstand high wind-pressure, snow loads and extreme temperatures.

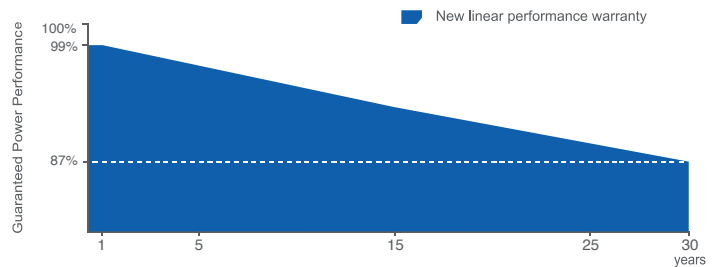
Passed IEC 5400 Pa mechanical loading test.
PID Resistance Available.

QUALITY AND SAFETY

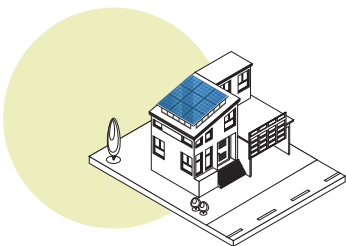


- Industry leading power output warranty
30 years/87,4%
- 30-year warranty on materials & workmanship
- Fire Rating: Class 1

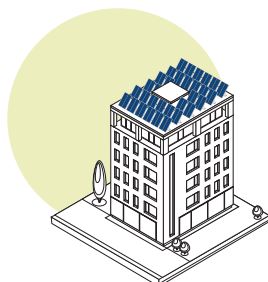
PREMIUM PERFORMANCE WARRANTY



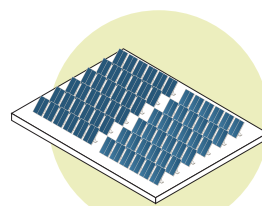
APPLICATIONS



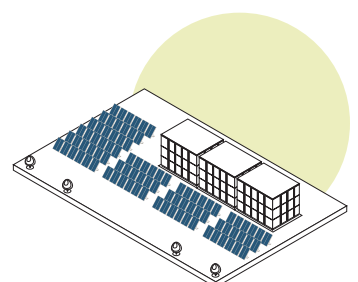
On-grid residential roof-tops



On-grid commercial - industrial roof-tops

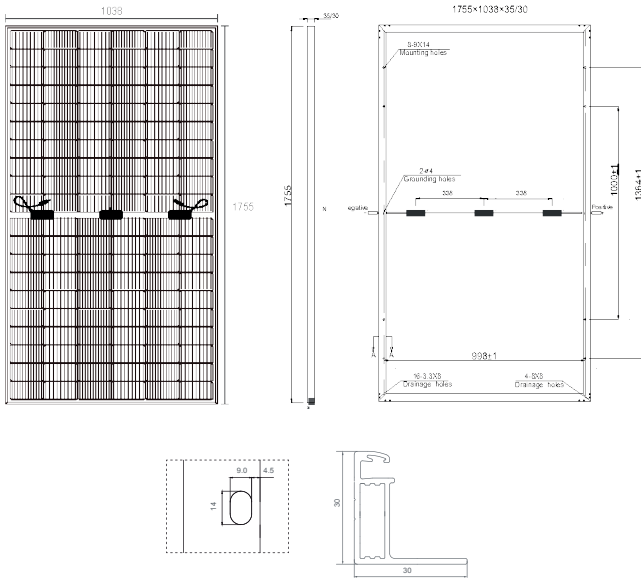


Solar power plants



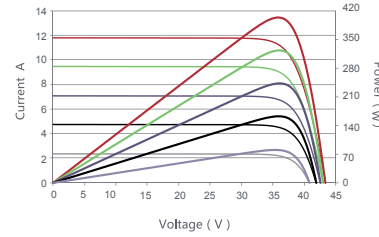
Off-grid systems

ENGINEERING DRAWINGS

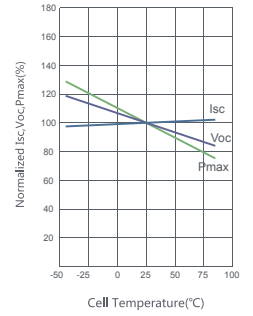


ELECTRICAL PERFORMANCE & TEMPERATURE DEPENDENCE

Current-Voltage & Power-Voltage Curves (400W)



Temperature Dependence of Isc, Voc, Pmax



PACKAGING CONFIGURATION

		Pallet on top:	Pallet below:
Standard packaging (pallet)	30mm	40/41	36/37
	35mm	35	31
Module quantity per 40' container	30mm: 988/1014 - 35mm: 858 pcs		
Pallets per container	26		

MECHANICAL CHARACTERISTICS

Cell Type	Orion N-Type TOPCon Mono-crystalline (166mm×83mm) Orion Technology Layer Applied*
No. of cells	120 (6×20)
Dimensions	1755×1038×30mm (±2mm) / 1755×1038×35mm (±2mm)
Weight	20.0kg
Front Glass	3.2mm, AR Coating, High Transmission, Low Iron, Tempered Glass
Frame	Anodized Aluminium Alloy (Silver/Black optional)
Junction Box	IP68 Rated
Output Cables	TÜV 1×4.0mm ² / UL 12AWG, Length: 1100mm

SPECIFICATIONS

Module Type ⁽¹⁾	ORION I-400M	
	STC ⁽²⁾	NMOT ⁽³⁾
Maximum Power (Pmax)	400Wp	289Wp
Maximum Power Voltage (Vmp)	34.7V	31.97V
Maximum Power Current (Imp)	11.53A	9.04A
Open-circuit Voltage (Voc)	41.00V	38.26V
Short-circuit Current (Isc)	12.13A	9.49A
Module Efficiency (%)	21.96%	
Voc and Isc tolerance	±3%	
Operating Temperature (°C)	-40°C ~ +85°C	
Maximum system voltage	1500V	
Maximum series fuse rating	20A	
Temperature coefficients of Pmax	-0.29%/°C	
Temperature coefficients of Voc	-0.25%/°C	
Temperature coefficients of Isc	0.048%/°C	
Nominal operating cell temperature (NOCT)	45±2 °C	

STC Irradiance 1000W/m²



Module Temperature 25°C



AM=1.5