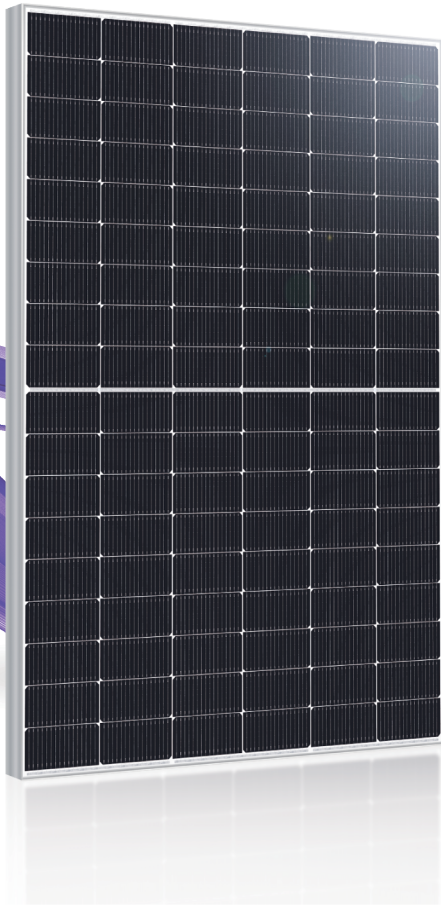


A company from Taiwan where the sun shines  
**URECO**  
 United Renewable Energy Co., Ltd.

EN



**GLORY TOPCon**

FBF\_BFO / 108 cells

420 W - 440 W

Mono-Crystalline Bifacial PV Module

United Renewable Energy Co., Ltd. (a company from Taiwan where the sun shines) Glory TOPCon module uses URECO TOPCon monocrystalline bifacial solar cells, and URECO advanced glass(G2G) module manufacturing technology.



## Key Features



SMBB cell design  
 Better reliability



Better bifaciality  
 Up to 85% bifaciality



PID resistance  
 Excellent PID resistance performance



Enhanced performance warranty  
 Zero light induced degradation effect/  
 Excellent low light performance



30-Year  
 Power output warranty



Superior temperature coefficient  
 Better performance in high temperature

**URECO**  
 A company from Taiwan where the sun shines



## Electrical Data

Model		Bifacial Gain			Bifacial Gain			Bifacial Gain		
		FBF420BFO	5%	10%	FBF425BFO	5%	10%	FBF430BFO	5%	10%
Maximum Rating Power (Pmax)	[W]	420	441	462	425	446	468	430	452	473
Module Efficiency	[%]	21.51	22.59	23.66	21.76	22.85	23.94	22.02	23.12	24.22
Open Circuit Voltage (Voc)	[V]	38.00	38.00	38.00	38.18	38.18	38.18	38.36	38.36	38.36
Maximum Power Voltage	[V]	31.42	31.42	31.42	31.58	31.58	31.58	31.74	31.74	31.74
Short Circuit Current (Isc)	[A]	14.16	14.87	15.58	14.26	14.97	15.69	14.36	15.08	15.80
Maximum Power Current	[A]	13.37	14.04	14.71	13.46	14.13	14.81	13.55	14.23	14.91
Model		FBF435BFO	5%	10%	FBF440BFO	5%	10%			
Maximum Rating Power (Pmax)	[W]	435	457	479	440	462	484			
Module Efficiency	[%]	22.28	23.39	24.51	22.53	23.66	24.78			
Open Circuit Voltage (Voc)	[V]	38.54	38.54	38.54	38.72	38.72	38.72			
Maximum Power Voltage	[V]	31.89	31.89	31.89	32.05	32.05	32.05			
Short Circuit Current (Isc)	[A]	14.46	15.18	15.91	14.56	15.29	16.02			
Maximum Power Current	[A]	13.64	14.32	15.00	13.73	14.42	15.10			

\*Standard Test Condition (STC): Cell Temperature 25 °C, Irradiance 1000 W/m<sup>2</sup>, AM 1.5  
 \*Values without tolerance are typical numbers. Measurement tolerance: ±3%

## Mechanical Data

Item	Specification
Dimensions	1722mm (L) <sup>1</sup> x 1134 mm (W) <sup>1</sup> x 30 mm (D) <sup>2</sup> / 67.80" (L) <sup>1</sup> x 44.65" (W) <sup>1</sup> x 1.18" (D) <sup>2</sup>
Weight	24.2 kg / 53.35 lbs
Solar Cell	N-type Mono / 182mm x 91mm, 108 monocrystalline cells
Front Glass	2.0mm thickness
Rear Glass	2.0mm thickness
Frame	Anodized aluminum alloy
Junction Box	IP68
Connector Type	MC4 connector
Length of Cable	4mm <sup>2</sup> , 1200mm
Package Configuration	36 pcs Per Pallet, 936 pcs per 40' HQ container

1 : With assembly tolerance of ± 2 mm [ ± 0.08" ]  
 2 : With assembly tolerance of ± 0.8 mm [ ± 0.03" ]

## Operating Conditions

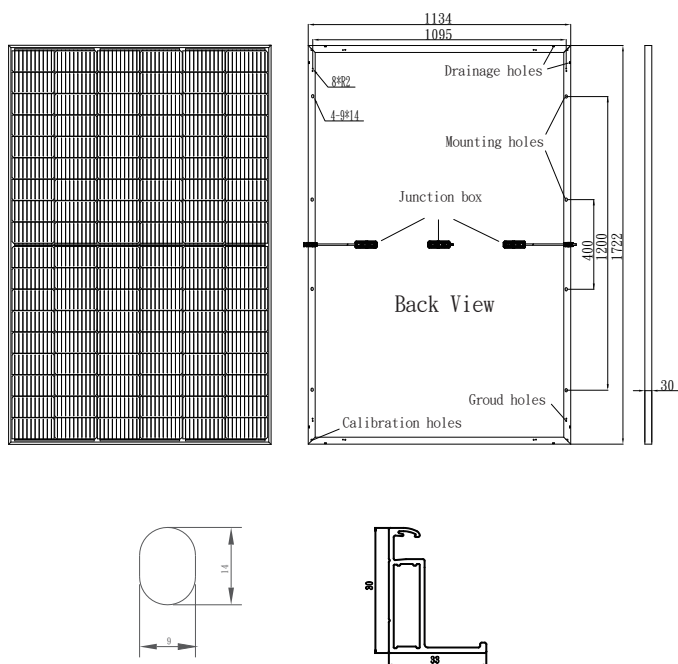
Item	Specification
Mechanical Load	5400 Pa
Maximum System Voltage	1500 VDC
Series Fuse Rating	25 A
Operating Temperature	-40 to 85 °C

## Temperature Characteristics

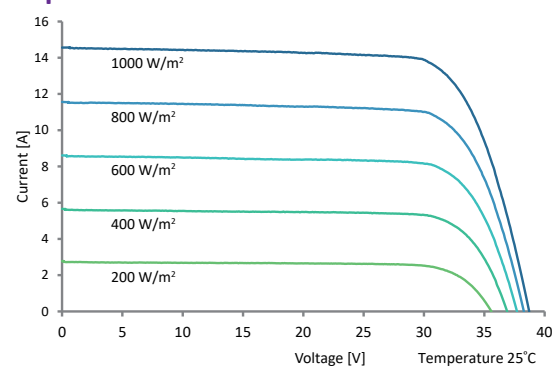
Item	Specification
Nominal Module Operating Temperature	44 °C ± 2 °C
Temperature Coefficient of Isc	0.046 % / °C
Temperature Coefficient of Voc	-0.25 % / °C
Temperature Coefficient of Pmax	-0.30 % / °C

\*Nominal module operating temperature (NMOT): Air mass AM 1.5, irradiance 800W/m<sup>2</sup>, temperature 20°C, windspeed 1 m/s.  
 \*Reduction in efficiency from 1000W/m<sup>2</sup> to 200W/m<sup>2</sup> at 25°C: 3.5 ± 2%.

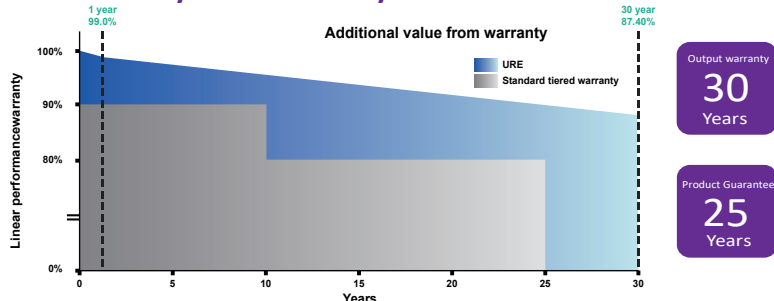
## Engineering Drawing (mm)



## Dependence on Irradiance



## Reliability with Warranty



For more information, please visit us at [www.urecorp.com](http://www.urecorp.com)