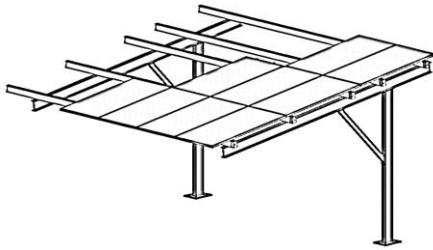


AXE | STRUCT

DS_AXE_CP_EX
Product data sheet
AXE^{CP} EX – Car Port Exclusive



AXE^{CP}

Car Port - Exclusive

Durable

Hot-dip galvanised steel for the toughest environmental conditions. Optional aluminium rails.

Innovative

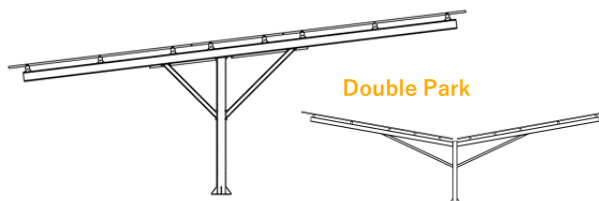
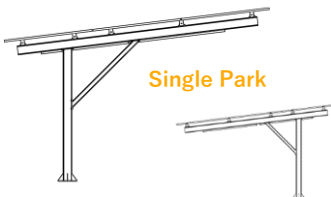
Cantilever system to provide space for vehicle doors and eliminate post collisions.

Trust

Conservative coefficient selections in structural design to assure resistance to failure.

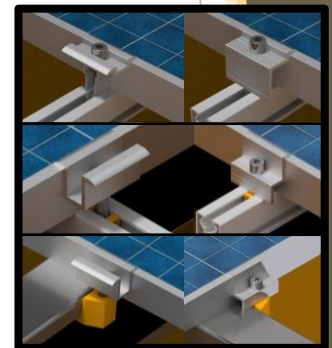
Effortless

Innovative design for time saving installation methods with a modular and practical integrated solution.

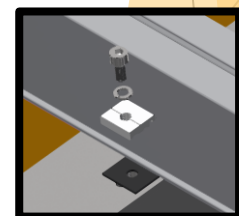


Additions	Cable trays along rails and cable clips to panel frames End caps for rails	
Steep terrain	Cross brace in selected bays if row angle is more than 2%	
Module layout	Landscape / Horizontal: Portrait / Vertical:	Single: Up to 6 high Up to 3 high
Module inclination	5° to 10° angle	
Width and height	Thermal gap within 35 meters increments of table length Lowest panel at maximum 3.2 meters: For higher canopies standard sized posts will be scaled accordingly. Per post height customisable to accommodate terrain variations	
Support spacing	2 or 3 park bays (up to 5.4 or 7.8 meters) End overhang of up to 2.5 meters	
Foundation	Flanges connected to casted threaded rods	
Standards	Eurocode 1 / SANS 10160 Eurocode 3 / SANS 10162 ISO 1461 Eurocode 9 Eurocode 7 / SANS 10400	Structural design Structural use of steel Hot dip galvanised coatings Design of aluminium structure Foundation design
Materials	Support rails (Selection) Rafters and Upright posts Small parts	Extruded aluminium (6063 T6) or Hot-dip galvanised lipped channels (S355) Hot-dip galvanised I-beams (S355) Hot-dip galvanised steel (8.8) Stainless steel (A2) Extruded aluminium (6063 T6)
Certification	ISO 9001	
Warranty	10 years ¹	

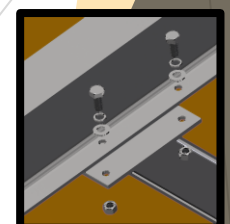
Clamp connection



Rail connections to Rafter



Post connections to Rafter



¹ For terms and conditions please refer to the Axe Struct Warranty Terms.