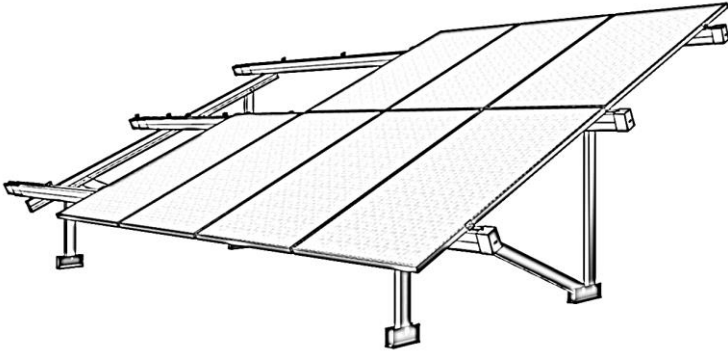


AXE | STRUCT

DS_AXE_GM_EL
Product data sheet
AXE^{GM} EL – Ground Mount Elite



AXE^{GM}

Ground Mount - Elite

Durable

All aluminium solution for the toughest environmental conditions.

Innovation

All connection points are adjustable for uneven terrains. Light weight for ease of installation.

Trust

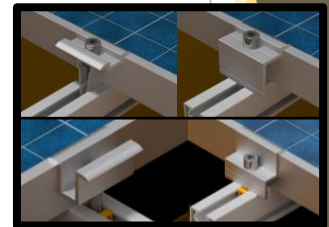
Conservative coefficient selections in structural design to assure resistance to failure.

Effortless

Innovative design for time saving installation methods with a modular and practical integrated solution.

Additions	Cable trays along rails and cable clips to panel frames End caps for rails and rafters	
Orientation	Mono-pitch or Duo-pitch	
Sway prevention	Cross brace in selected bays Available in either cables or angles	
Module layout	Landscape / Horizontal:	Up to 8 high
	Portrait / Vertical:	Up to 4 high
Module inclination	10° to 25° angle	
Width and height	Table length up to 35 meters, or adding of thermal gaps Lowest panel at maximum 1.5 meters, or consider Car Port structures	
Support spacing	In accordance with static calculations Up to 5.4 meters, depending on module inclination End overhang of up to 1.5 meter	
Foundation	Footplates connected to casted threaded rods Ground screws connected to footplates	
Standards	Eurocode 1 / SANS 10160	Structural design
	Eurocode 3 / SANS 10162	Structural use of steel
	Eurocode 9	Design of aluminium structure
	Eurocode 7 / SANS 10400	Foundation design
Materials	Support rails, Rafters, Upright posts and Bases	Extruded aluminium (6063 T6)
	Small parts	Stainless steel (A2) Extruded aluminium (6063 T6)
Certification	ISO 9001	
Warranty	10 years ¹	

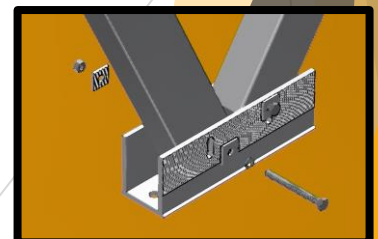
Clamp connection



Post connections to Rafter



Pile connections to Base



¹ For terms and conditions please refer to the Axe Struct Warranty Terms.