



OSDA-EN-20240723



GLOBAL SMART ENERGY SOLUTION PROVIDER

600-630W

N-Type Monofacial / Bifacial

ODA-132RMH/D



Top manufacturers to develop N-type technology



Gain increases as the backside is exposed to light significantly reducing the LCOE.



5400Pa snow pressure, 2400Pa wind pressure



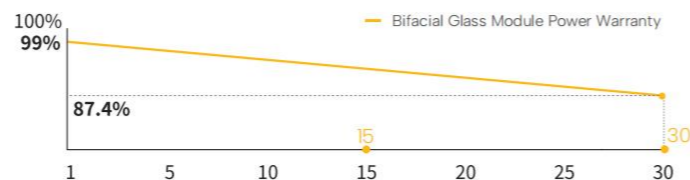
Robust and reliable, full backside welding to improve cell resistance to hidden cracks



15 YEARS
Guarantee
Bifacial



30 YEARS
Warranty
Bifacial



COMPREHENSIVE PRODUCT AND SYSTEM CERTIFICATION



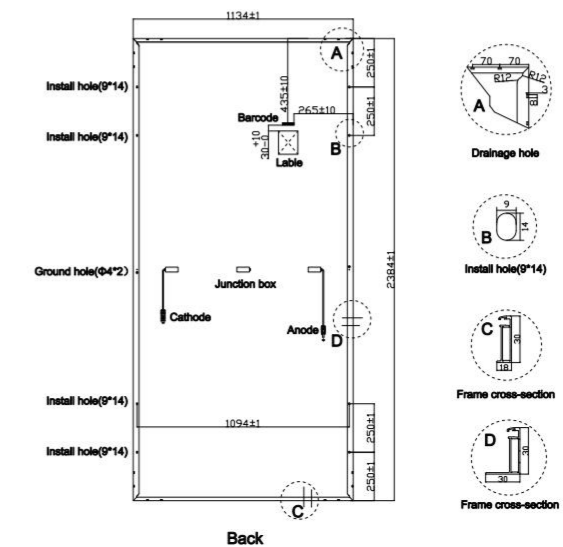
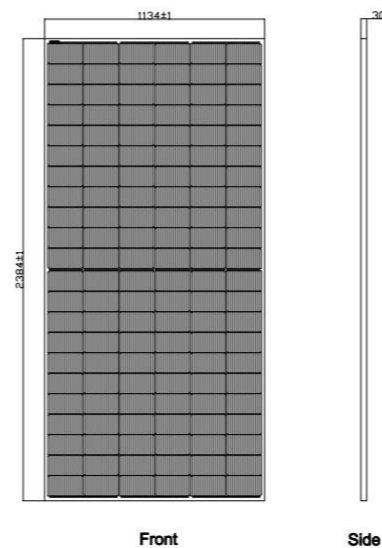
SPECIFICATION (STC)

MODEL TYPE	ODA600-33VR-MH	ODA605-33VR-MH	ODA610-33VR-MH	ODA615-33VR-MH	ODA620-33VR-MH	ODA625-33VR-MH	ODA630-33VR-MH
	ODA600-33VR-MHD	ODA605-33VR-MHD	ODA610-33VR-MHD	ODA615-33VR-MHD	ODA620-33VR-MHD	ODA625-33VR-MHD	ODA630-33VR-MHD
Peak Power (Pmax)	600.00	605.00	610.00	615.00	620.00	625.00	630.00
Maximum Power Voltage (Vmp)	39.44	39.60	39.77	39.96	40.15	40.32	40.50
Maximum Power Current (Imp)	15.21	15.28	15.34	15.39	15.44	15.50	15.56
Open Circuit Voltage (Voc)	47.70±3%	47.90±3%	48.10±3%	48.30±3%	48.50±3%	48.70±3%	48.90±3%
Short Circuit Current(Isc)	15.95±3%	16.00±3%	16.05±3%	16.10±3%	16.15±3%	16.20±3%	16.25±3%
Module Efficiency(%)	22.19	22.38	22.56	22.75	22.93	23.12	23.30
Power Tolerance	0~+3 W						
Pmax Temperature Coefficients(W/°C)	-0.300%/°C / -0.290 %/°C						
Voc Temperature Coefficients(V/°C)	-0.260%/°C / -0.250 %/°C						
Isc Temperature Coefficients (A/°C)	+0.047 %/°C / +0.041 %/°C						
NOCT Nominal Operating Cell Temperature (°C)	45±2 °C						
Operating and Storage Temperature(°C)	-40~+85 °C						
Standard Test Condition(STC)	1000W/m, AM1.5,25+/-2°C						

MECHANICAL CHARACTERISTICS&PACKING

Cell Type(mm)	182*105 N Type Mono
No. of cells	132(12*11)
Dimensions(mm)	2384*1134*30mm
Weight	29.70kg/32.4kg
Front Glass(mm)	3.2mm high transmission, low iron, tempered glass
Frame	Anodized Aluminium Alloy
Maximum System Voltage(V)	1500V
Maximum Series Fuse Rating(A)	30A/35A(Monofacial/Bifacial)
Junction box	IP68 3 diodes
Output cables	4mm ² cable 35cm(Including MC4 connector)
MaxWind Load/Snow Load	2400Pa/5400Pa
20FT container	4 Packages/148pcs
40HQ container	20 Packages/740pcs

ASSEMBLY DRAWING



Specifications included in this datasheet are subject to change without notice.