

AXE^{GM}

Ground Mount - Economical

Durable

Aluminium and hot-dip galvanised steel for the toughest environmental conditions.

Economical

Cost competitive, functional design with minimal number of tools needed, reducing installation costs.

Trust

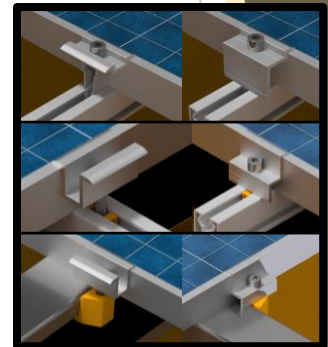
Conservative coefficient selections in structural design to assure resistance to failure.

Effortless

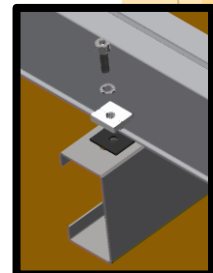
Innovative design for time saving installation methods with a modular and practical integrated solution.

Additions	Cable trays along rails and cable clips to panel frames End caps for rails Diagonal support to upright posts to reduce foundation moments	
Sway prevention	Cross brace in selected bays Available in either cables or angles	
Module layout	Landscape / Horizontal:	Up to 8 high
	Portrait / Vertical:	Up to 4 high
Module inclination	10° to 25° angle	
Width and height	Table length up to 35 meters, or adding of thermal gaps Lowest panel at maximum 1.5 meters, or consider Car Port structures	
Support spacing	In accordance with static calculations Up to 5.4 meters, depending on module inclination End overhang of up to 1.5 meter	
Foundation	Posts driven into soil Predrilled holes and concrete backfill to positioned posts Footplates connected to casted threaded rods Posts casted into reinforced concrete Ground screws connected to footplates Ground screws connected to round tube posts	
Standards	Eurocode 1 / SANS 10160 Eurocode 3 / SANS 10162 ISO 1461 Eurocode 9 Eurocode 7 / SANS 10400	Structural design Structural use of steel Hot dip galvanised coatings Design of aluminium structure Foundation design
Materials	Support rails (Selection) Rafters and Upright posts Small parts	Extruded aluminium (6063 T6) or Hot-dip galvanised lipped channels (S355) Hot-dip galvanised lipped channels (S355) Hot-dip galvanised steel (8.8) Stainless steel (A2) Extruded aluminium (6063 T6)
Certification	ISO 9001	
Warranty	10 years ¹	

Clamp connection



Rail connections to Rafter



Post connections to Rafter

