



## PV SOLAR FLAT CHEMICAL ANCHOR CONCRETE ROOF MOUNTING STRUCTURE SOLUTION

The Valsa Flat Chemical Anchor Concrete roof mounting structure provides a penetrating chemical anchor solution for installing solar panels onto flat concrete roofs, as part of the structure of the building. The solution is suitable for commercial, industrial, and domestic buildings and maximises the harvesting of photovoltaic power.

It is a simple and versatile solution with all the components tested and approved by South Africa roof manufacturers which ensures that the roof warranties and guarantees remain intact for the PV solar installation.

The solution has been designed and manufactured to SABS standards, is in line with SANS regulations and take African building regulations into consideration. The roof mounting structure solution is ideally suited for African weather conditions.

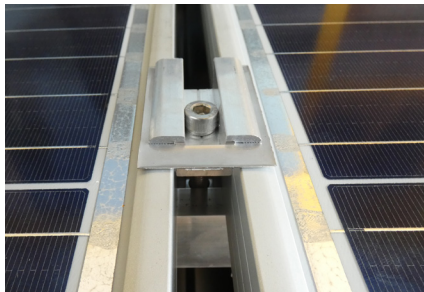
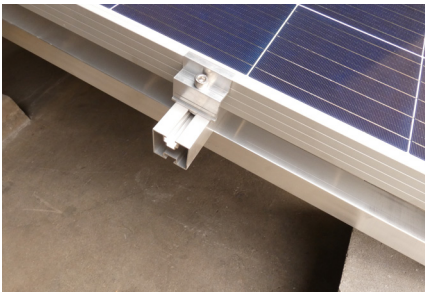
Custom made solutions can be designed and manufactured on request.

# CHARACTERISTICS

<b>Versatility</b>	<ul style="list-style-type: none"> <li>• Standard flat concrete roof mounting structure for all site specifics</li> <li>• Flexible design for improved PV Solar performance</li> <li>• Accommodate standard nuts and bolts</li> </ul>
<b>Design</b>	<ul style="list-style-type: none"> <li>• Structural engineering compliant</li> <li>• Easy mechanical assembly</li> <li>• High quality material</li> </ul>
<b>Flexible</b>	<ul style="list-style-type: none"> <li>• Accommodate customer requirements</li> <li>• Quick and easy to install</li> </ul>
<b>Panel orientation</b>	<ul style="list-style-type: none"> <li>• Portrait and landscape</li> </ul>
<b>Cost effective</b>	<ul style="list-style-type: none"> <li>• Cost effective PV solar roof solution</li> </ul>
<b>Tools</b>	<ul style="list-style-type: none"> <li>• Standard equipment for all installations</li> </ul>
<b>Long life span</b>	<ul style="list-style-type: none"> <li>• Aluminium structure has a long life</li> </ul>
<b>Maintenance</b>	<ul style="list-style-type: none"> <li>• Low maintenance</li> </ul>
<b>Warranty</b>	<ul style="list-style-type: none"> <li>• 10 years site dependant</li> </ul>

# SPECIFICATIONS

<b>Material</b>	<ul style="list-style-type: none"> <li>• Aluminium structure - Alloy 6063</li> </ul>
<b>Tilt</b>	<ul style="list-style-type: none"> <li>• Elevated</li> </ul>
<b>Components</b>	<ul style="list-style-type: none"> <li>• Aluminium components</li> <li>• Stainless-steel fixing components</li> </ul>
<b>Certification</b>	<ul style="list-style-type: none"> <li>• SABS standards and SANS regulations</li> </ul>



**Valsa South Africa**  
 Laser Park, Erf. 115 Battleship Road,  
 Cnr Boat Turn Road, Honeydew,  
 Gauteng, 1724, South Africa  
**Tel** +27 (0) 11 794 1306 |  
 +27 (0) 61 288 2572 | +27 (0) 84 235 5282  
**E-mail** info@valsa.co.za  
**www.valsa.co.za**

**Valsa Kenya**  
 Casa Moko Plaza, Unit 1, North Airport  
 Road Eastern Bypass, Nairobi  
**Tel** +254 713 671 833  
**E-mail** info@valsa.co.ke  
**www.valsa.co.ke**

**Valsa Zimbabwe**  
 7 Everret Close, Mount Pleasant,  
 Harare  
**Tel** +263 77 228 3889  
**E-mail** info@valsa.co.zw  
**www.valsa.co.zw**