

PV SOLAR ZIP-TEK ROOF MOUNTING STRUCTURE SOLUTION

The Valsa Zip-Tek roof mounting structure provides a solution for installing solar panels, as part of the structure of the building, onto Zip-Tek roofs found on commercial, industrial, and domestic buildings while maximising the harvesting of photovoltaic power.

The non-penetrating solar mounting structure is a simple and versatile solution with all the components tested and approved by South Africa roof manufacturers, ensuring roof warranties and guarantees remain intact for PV solar installations on existing and new roofs.

The solution has been designed and manufactured to SABS standards, is in line with SANS regulations and take African building regulations into consideration. The roof mounting structure solution is ideally suited for African weather conditions.

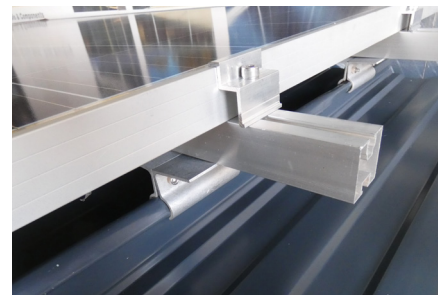
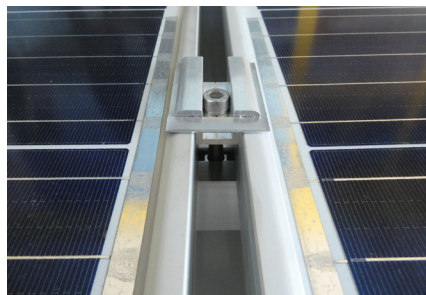
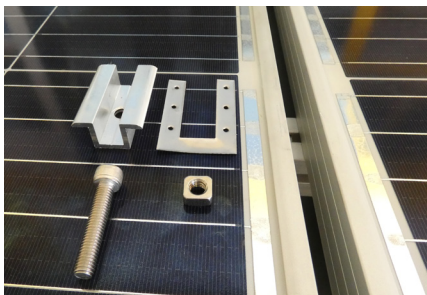
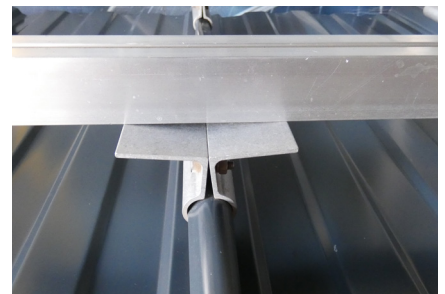
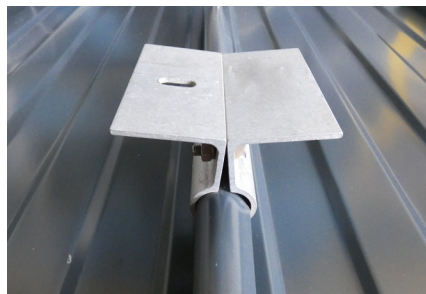
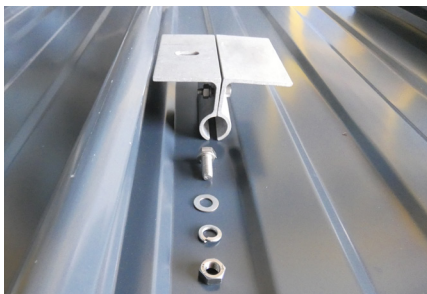
Custom made solutions can be designed and manufactured on request.

CHARACTERISTICS

Versatility	<ul style="list-style-type: none"> • Standard Zip-Tek mounting structure solutions for all site specifics • Flexible design for improved PV Solar performance
Design	<ul style="list-style-type: none"> • Structural engineering compliant • Easy mechanical assembly • High quality material
Flexible	<ul style="list-style-type: none"> • Accommodate customer requirements • Quick and easy to install
Panel orientation	<ul style="list-style-type: none"> • Portrait and landscape
Cost effective	<ul style="list-style-type: none"> • Cost effective PV solar roof solution
Tools	<ul style="list-style-type: none"> • Standard equipment for all installations
Long life span	<ul style="list-style-type: none"> • Aluminium structure has a long life
Maintenance	<ul style="list-style-type: none"> • Low maintenance
Warranty	<ul style="list-style-type: none"> • 10 years site dependant

SPECIFICATIONS

Material	<ul style="list-style-type: none"> • Aluminium structure - Alloy 6063
Tilt	<ul style="list-style-type: none"> • Flat and elevated
Components	<ul style="list-style-type: none"> • Aluminium components • Stainless-steel fixing components
Certification	<ul style="list-style-type: none"> • SABS standards and SANS regulations



Valsa South Africa
 Laser Park, Erf. 115 Battleship Road,
 Cnr Boat Turn Road, Honeydew,
 Gauteng, 1724, South Africa
Tel +27 (0) 11 794 1306 |
 +27 (0) 61 288 2572 | +27 (0) 84 235 5282
E-mail info@valsa.co.za
www.valsa.co.za

Valsa Kenya
 Casa Moko Plaza, Unit 1, North Airport
 Road Eastern Bypass, Nairobi
Tel +254 713 671 833
E-mail info@valsa.co.ke
www.valsa.co.ke

Valsa Zimbabwe
 7 Everret Close, Mount Pleasant,
 Harare
Tel +263 77 228 3889
E-mail info@valsa.co.zw
www.valsa.co.zw