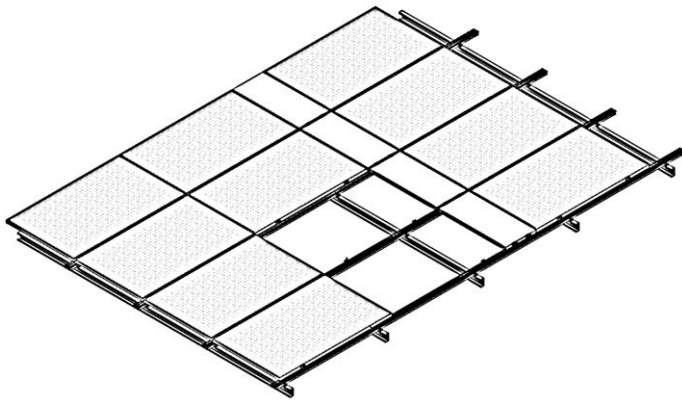


# AXe | STRUCT

DS\_AXE\_RT\_IR  
Product data sheet  
AXE<sup>RT</sup> IR – Roof Top Inroof



## AXE<sup>RT</sup>

### Roof Top – Inroof

#### Durable

Aluminium rails with stainless steel fasteners for the toughest environmental conditions.

#### Innovative

No roof sheeting needed, since standard PV modules integrating with our rail sealing system to act as a waterproofed cover.

#### Economical

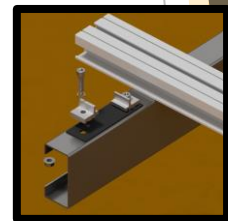
Eliminating the need for roof sheeting saves in the overall building cost.

#### Effortless

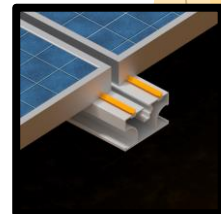
Innovative design for time saving installation methods with a modular and practical integrated solution.

<b>Additions</b>	Cable clips to panel frames
<b>Sealing</b>	Module long side: Window-glass gasket technology Module short side: Interlocking U-Gasket
<b>Module orientation</b>	Portrait
<b>Inclination</b>	Depended on the slope of existing structures
<b>Access</b>	Integrated walkway panels (On request)
<b>Standards</b>	SANS 10160      Structural design Eurocode 9      Design of aluminium structure
<b>Materials</b>	Support rails      Extruded aluminium (6063 T6) Sealant products      Polyethylene Small parts      Stainless steel (A2) Extruded aluminium (6063 T6)
<b>Certification</b>	ISO 9001
<b>Warranty</b>	10 years <sup>1</sup>

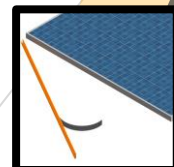
#### Rail connections to Purlins



#### PV module position on Rails



#### U-Gasket application Between PV modules



For further information: [www.axestruct.com](http://www.axestruct.com)  
Subject to change without notice.  
2019 © Axe Struct (Pty) Ltd

<sup>1</sup> For terms and conditions please refer to the Axe Struct Warranty Terms.